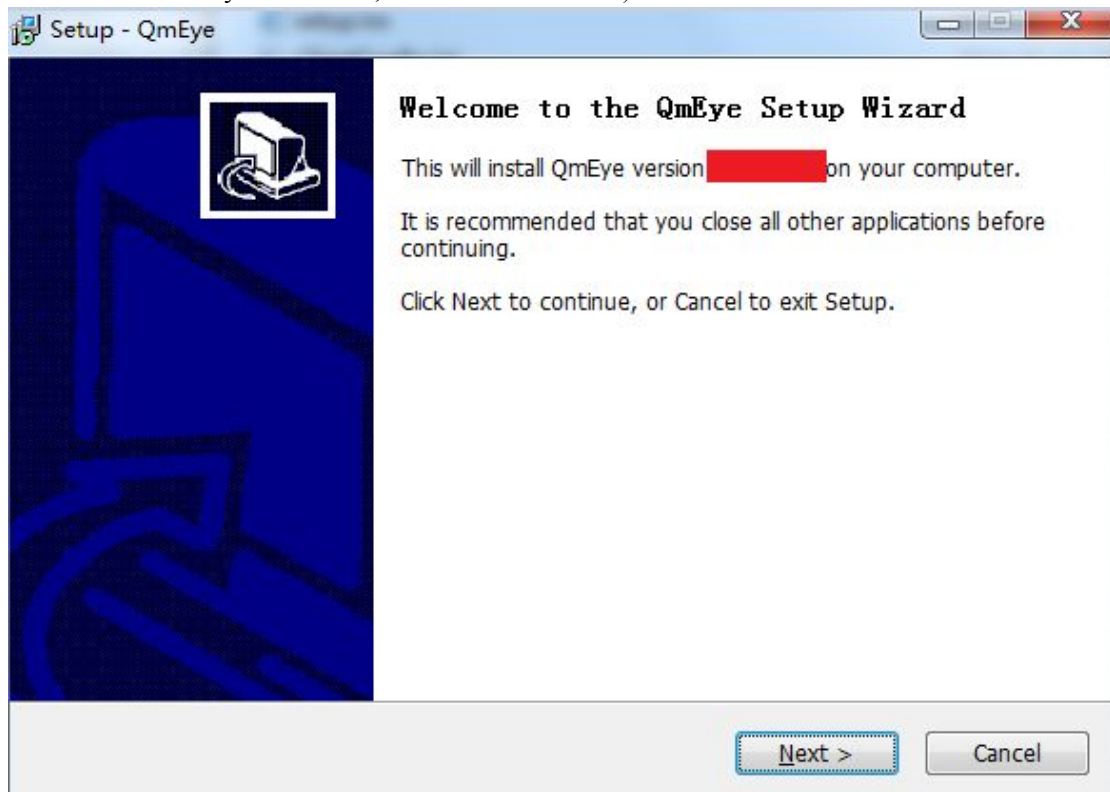


QmEye_PC_Client_

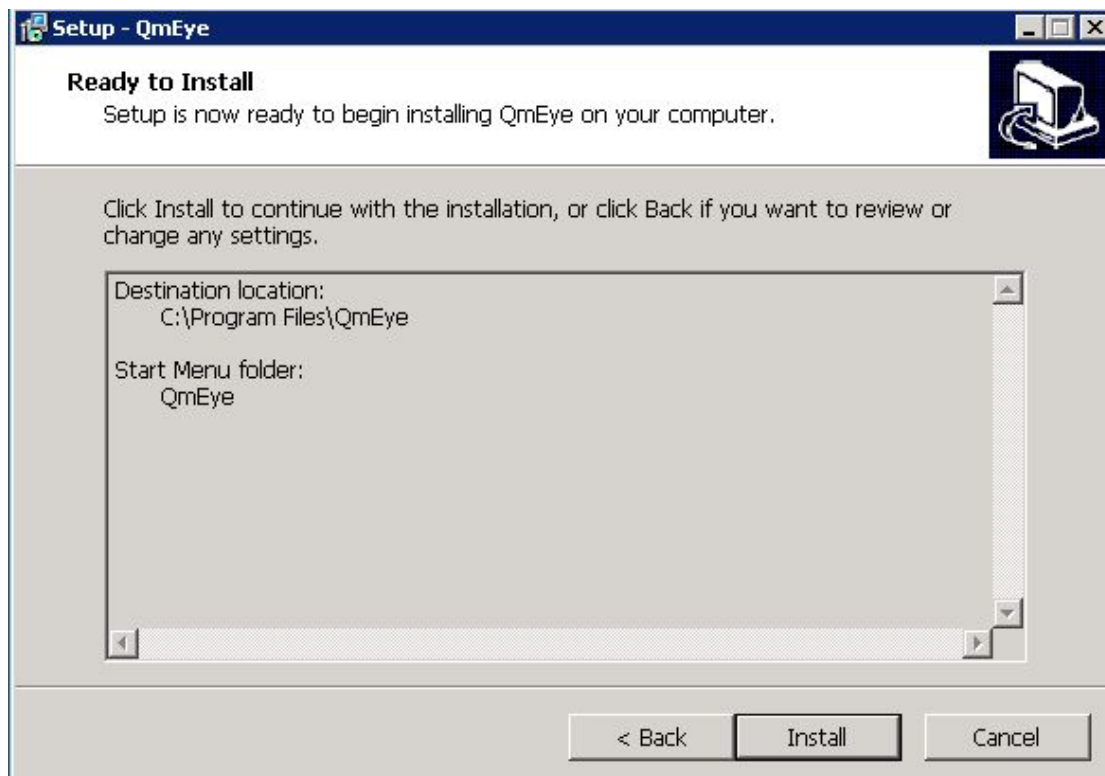
Introduction

1、Install

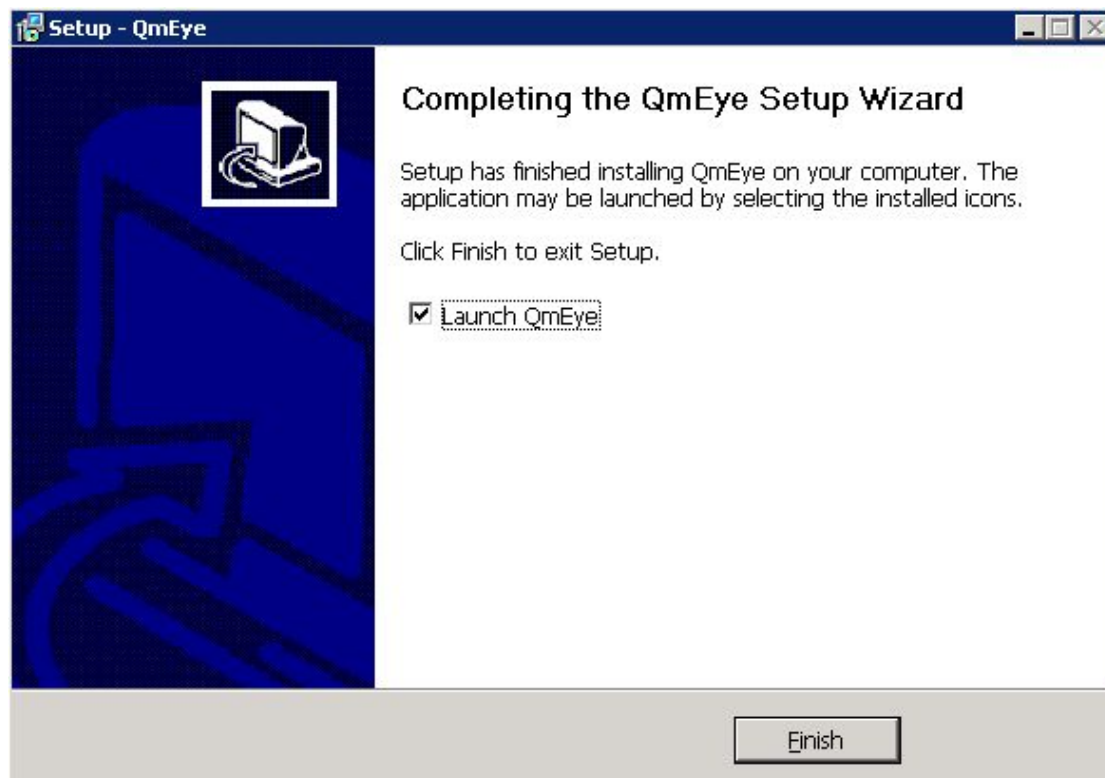
Double-click to open QmEye installation file, pop up following the installation wizard(The version number may be different, but not influence use)



Click "next" until the following interface, click the "install"



After the installation of software, pop-up window as follows:

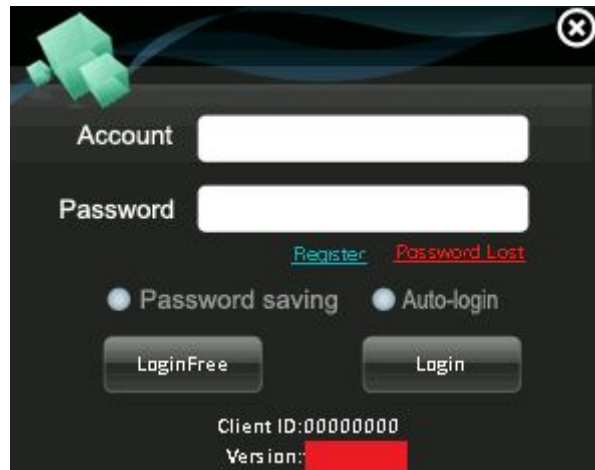


Click "finish"

2、 Using the software

2.1 Login

Start the application, the program into the landing interface, as shown in P2-1

A screenshot of a login window with a dark background. At the top left is a green 3D cube icon, and at the top right is a close button (X). The window contains two text input fields labeled 'Account' and 'Password'. Below the 'Password' field are two links: 'Register' in blue and 'Password Lost' in red. There are two radio buttons: 'Password saving' and 'Auto-login'. At the bottom are two buttons: 'LoginFree' and 'Login'. At the very bottom, it displays 'Client ID:00000000' and 'Version:' followed by a red rectangular box.

P2-1 Login

Enter account and password to log in. If the user does not have the account , you can apply for to register. And local login is permitted.

2.2 Register

Clicks the "register" on the login interface, enter the registration screen, as shown in P2-2.

A screenshot of a registration window titled 'Register' with a close button (X) in the top right corner. The window contains several text input fields: 'Username', 'Password', 'Confirm', 'Mail' (with the placeholder text 'Used to retrieve password!'), 'Name', and 'Phone'. Each of the first three fields has an asterisk (*) to its right. At the bottom are two buttons: 'Register' and 'Return'.

P2-2 Register

With * is required, fill in and then click the "register".

2.3 Password lost

If users have account, but forget the login password. You can through the e-mail to retrieve password. Click “Password lost”, Enter the following interface

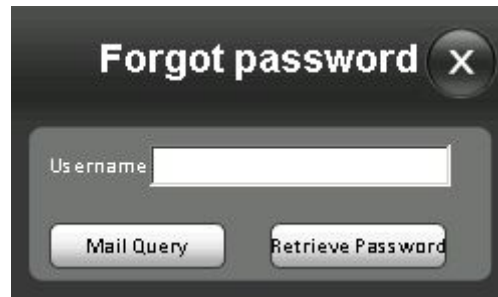
A dark-themed dialog box titled "Forgot password" with a close button (X) in the top right corner. Below the title is a text input field labeled "Username". At the bottom, there are two buttons: "Mail Query" and "Retrieve Password".

图 2-3 Password lost

Mail QueryL: Check the reserved E-mail information when registering.

Retrieve Password: System will send an email to the email, according to the prompt to reset the login password

2.4 Main Interface

After the success of the user login, enter the main interface, as shown in P2-4.



P2-4 main interface

Main interface is divided into four parts, including at the top of the navigation bar(P2-5), the left menu bar - device list and function(P2-6), in the middle of the play rect(P2-7), And at the bottom of the play controls(P2-8)



P2-5 Navigation bar



P2-6 Device list and function






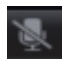












P2-7 The play rect



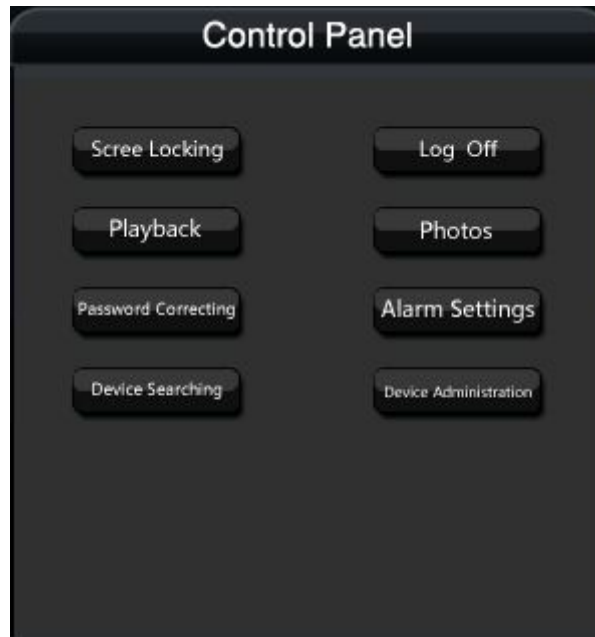
P2-8 Play controls

The description of each icon function as the following:

icon	function description	icon	function description
	Directory: For equipment management, classification of grouping and operation		The local video, select a live preview screen to start the video. Video files saved on your PC.
	equipment : Multi-channel DVR, NVR, etc. If the corresponding equipment don't online icon as grey		Local snap, select a live preview screen starts to capture. The snap images stored on your local PC.
	Camera: The IPC or a channel, etc , If the corresponding camera don't online icon as grey		Talkback, real-time two -way intercom
	Single picture full-screen playback, can also double-click on the play form in full-screen playback		Monitoring, one-way receive the playback audio
	Turn off the live preview		64 split-screens, support 1、 4、 9、 16、 25、 36、 49 and 64 split-screens.

	full screen, picture full screen playback.		sign out
	64 split-screens, support 1、4、9、16、25、36、49 and 64 split-screens.		help, click to open help page
	Page up		Page down

2.5 Control panel



Picture 2-9 control panel

Screen locking: Lock the screen, in the lock case is not able to do any operation in current interface apart from unlocking.(PS: It is not permitted, on local login mode.)

Log off: logout the client

Playback: to playback the remote video and local video

Photos: view local images save by capture

Password Correcting: modify the user logon password(PS: It is not permitted, on local login mode.)

Alarm Settings: set the front-end device booted and alarm monitoring types(PS: It is not permitted, on local login mode.)

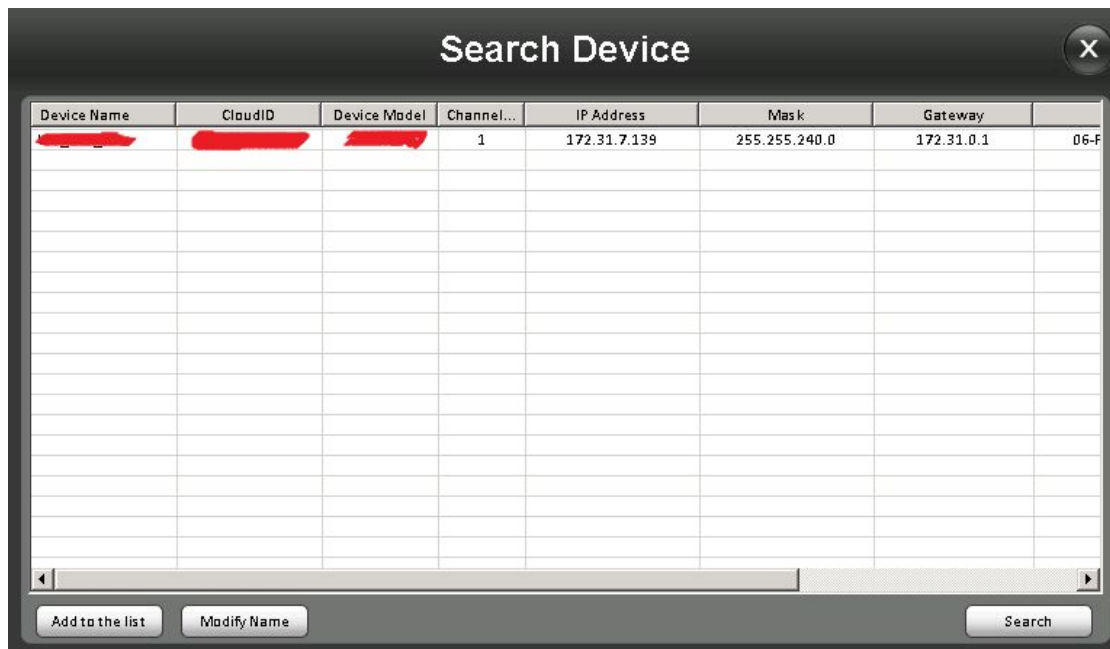
Device Searching: search all device which in LAN

DeviceAdministration: for operation such as rename, add, delete a device.

2.6 Add the Device

2.6.1 Quick Add

“Control Panel” -> “Device Searching”, then pop up the device searching interface, as shown in P2-10



P2-10 search the device

Select out a device is searched, and then click “add to the list” filling device login ID and password, as showed in P2-11

P2-11 add a device to lists

Parent directory: add the camera to specific catalogue

Scene name: add to the display name of the user to the device lists.

Username: login username of the device

Password: the login password of the device

Channel NO: view what channel number, start from 1. Completed IPC as 1

Streaming: request to a front- end device stream format while live preview, default is sub stream.

Fulfill the above information: after finished, click “add” button



图 2-12

2.6.2Add the device manually

“Control the panel” ->”Device management”, then pop up the device management interface, as shown in figure 2-13



Picture 2-13 device management

Firstly, select a directory from the device list box, then click “add the cameras” enter the added interface like the following figure:

Picture 2-14 add cameras

Device name: the display name that you add to the user device list, more convenient to people identify (such as living room)

Device type: lens (the channel of the IPC, DVR\NVR), device (such as DVR\NVR)

Connection modes: (IP address and port access mode), P2P (cloud- penetration mode)

Protocol: select the front-end device protocol

Cloud ID: front-end device ID to identify the device, P2P mode exclusive.

Username: the login username of device

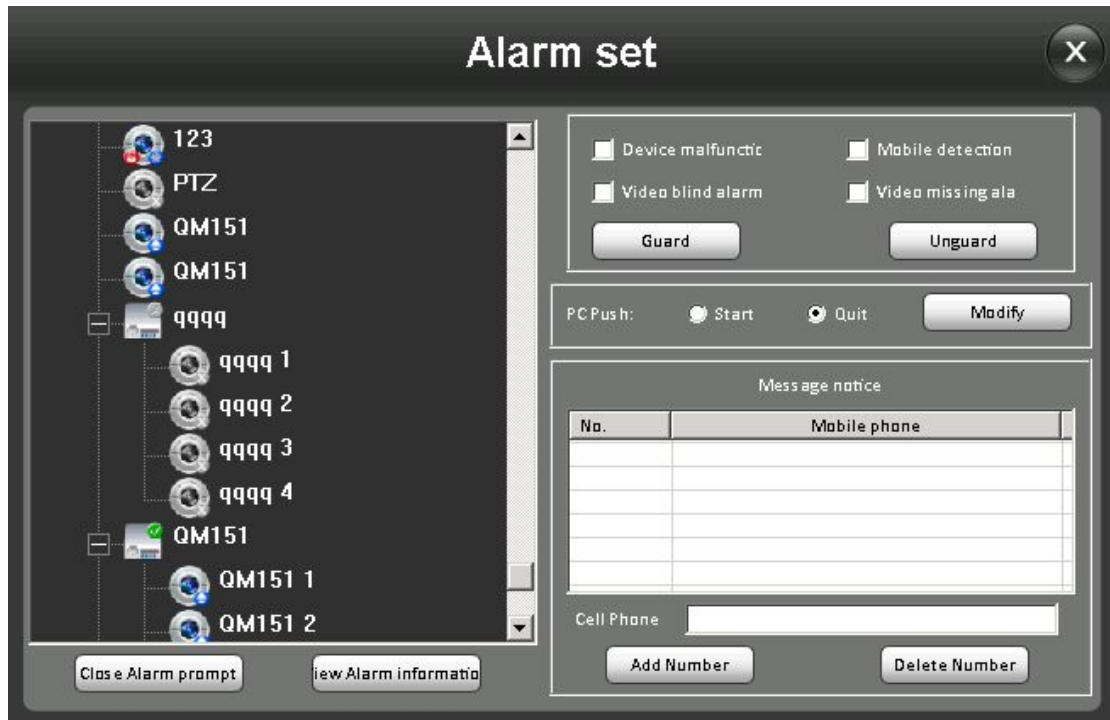
Password: device login password

Channel NO: view what channel number, start from 1. Completed IPC as 1 (if it is the device type, it is the channel number mean: complete 8 if is 8Channel DVR)

Stream: request to a front- end device stream format while live preview, 0 is main stream,1 is sub stream, default is sub stream.

2.7 Alarm setting

“Control the panel” ->”alarm configuration”, then pop up the alarm setting interface, as shown in figure 2-15



Picture 2-15 alarm setting

Guard: start 4 alarm types monitoring which you tick

Unguard: cancel all alarm types monitoring

PC Push: after booting and the related equipment alarm is triggered, the server will push the information to the PC client and prompt the user

Add number: add SMS notice number

Delete number: delete SMS notice number

Turn off the alarm: turn off the alarm, which the PC client is no longer to prompt the push information of device trigger alarm

Open the alarm: turn on the alarm, which the Pc client will prompt the push information of device trigger alarm.

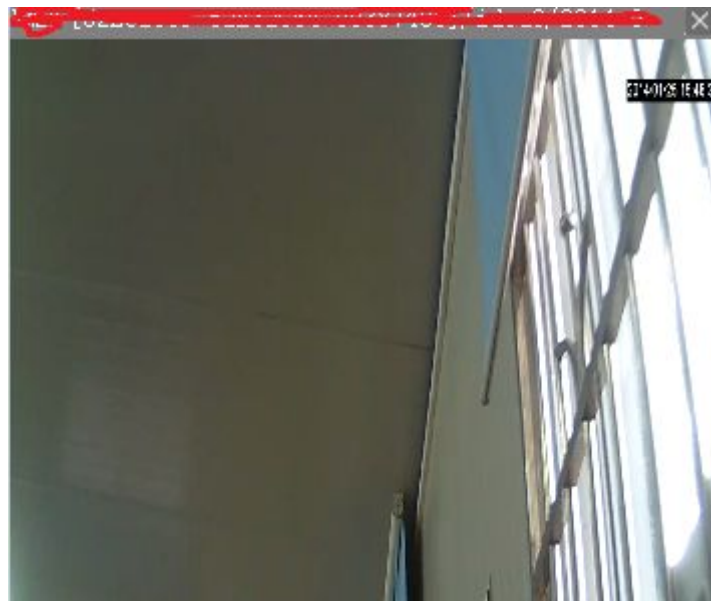
View the alarm information: after starting current PC to view all alarms push messages.

2.8 Video playback

2.8.1 Remote video playback

“Control the panel” -> “video playback”, then pop up the video select operation interface, (as shown in figure 2-16), select “remote video” then into remote video playback interface, as shown in figure 2-17

Double click a video to play in the video lists (as follows), double click the playing interface can be full screen.



Picture 2-19 remote video playback

2.8.2 Local video

“Control the panel” ->”video playback” -> “local video”, then pop up the local video interface, (as following:



Select the local video date that need to view. Query the related video and double click to play.