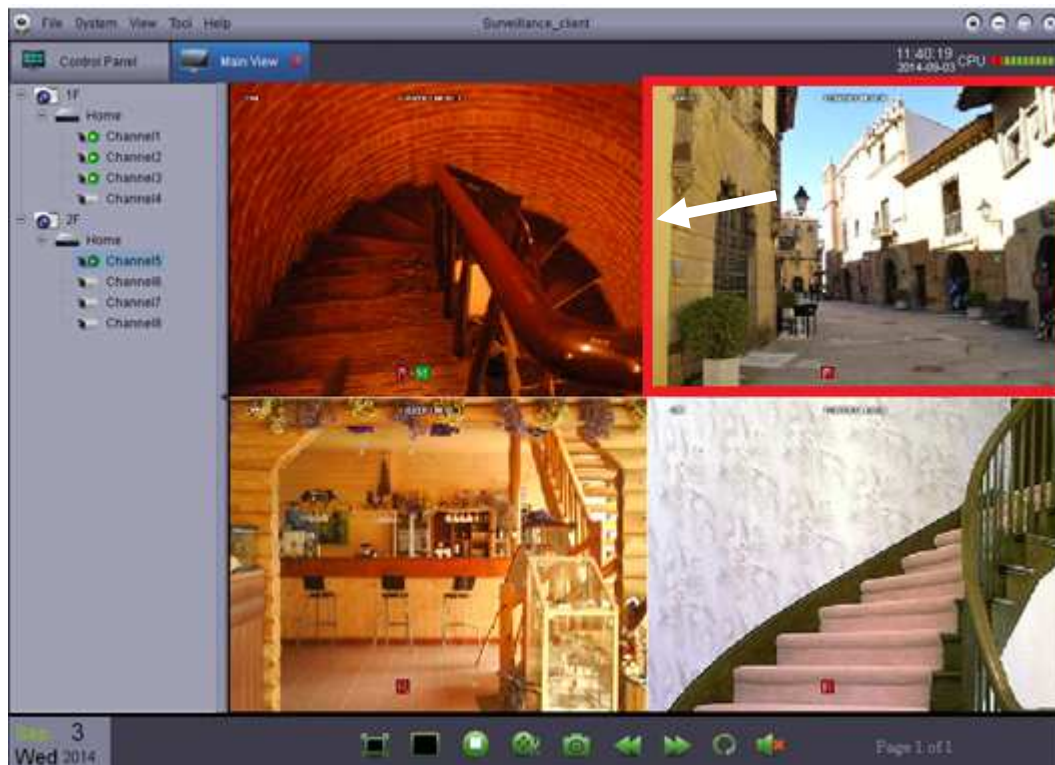


Dear users,

When you see the preview channel is encircled in red, it means this preview channel is currently in Rely Mode instead of Peer to Peer (P2P) connection. The streaming video in relay mode is limited to 3 minutes. When the connection time is up in relay mode, you must manually add the disconnected channel back for preview again.

We recommend you to add/connect devices (DVR/NVR/IP Camera) by their IP address or domain name to avoid the limited connection time.



Sincerely yours,

Your KGUARD team