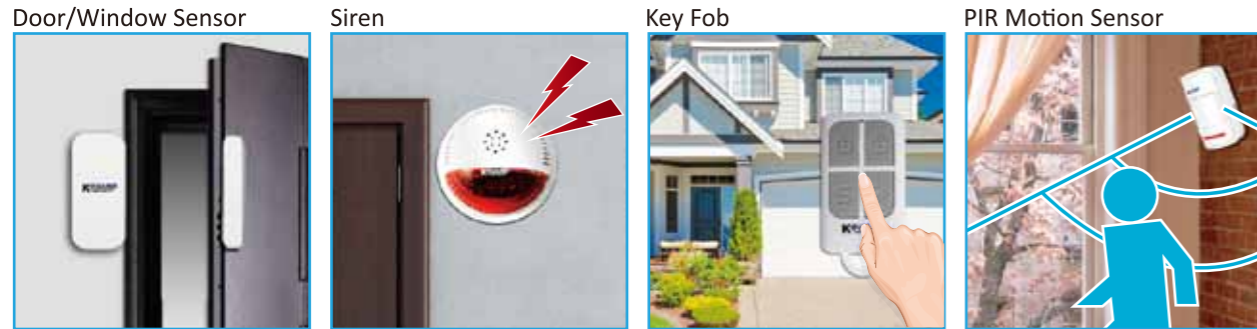


# KGUARD Wireless Alarm Kit

## Quick Installation Guide

### Overview of Wireless Alarm Kit & KGUARD Control Unit



Alarm Antenna  
100M ~ 150M



**KGUARD Control Unit :**  
This wireless alarm kit is designed for use with PLUS Series KGUARD Control Unit. KGUARD Control Unit can be a DVR (e.g. EasyLink PLUS Series : EL431, EL831, EL1631), NVR or IP Camera, but may not be included in the package depending on the model you purchased.

- Push Notification
- Live View
- Email
- Video Playback (KViewLink App)

**Sensors, sirens, key fobs, etc. in this package are already paired with the alarm antenna during manufacture. You can start installing alarm kit (as well as battery) as shown in the illustration below now. We recommend planning alarm sensor/siren locations first before installing them in place.**

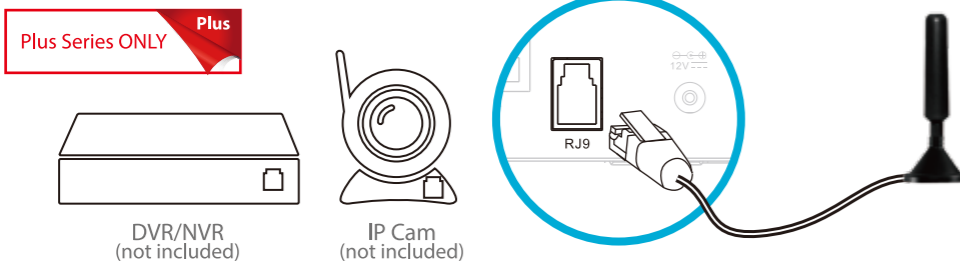
- This wireless alarm kit is for indoor application.
- All wireless alarm devices must be within 100-150M range (no interference) of the alarm antenna and must not be placed on or near large metal objects.
- Avoid obvious sources of electrical interference such as fridges and microwave ovens.
- Do not install the PIR motion sensors near any device which emits heat or cold, such as air conditioners, ovens, heaters, etc.

**When the installation of alarm kit is done, check the following on KGUARD Control Unit (DVR/NVR/IP Camera) to ensure the maximum performance of the alarm kit.**

1. KGUARD Control Unit is powered on.
2. The HDD/Memory Card is installed inside the KGUARD Control Unit, and stores recordings successfully.
3. The KGUARD Control Unit is connected to the Internet successfully.
4. Alarm devices are enabled, set to record or sound the siren when sensors are triggered.
5. The siren schedule is configured.

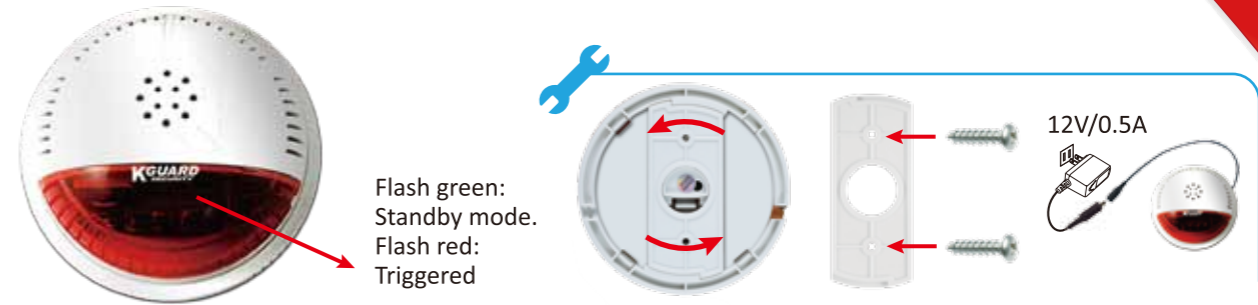
### Alarm Antenna

Plug the Alarm Antenna into the RJ9 port on KGUARD Control Unit.

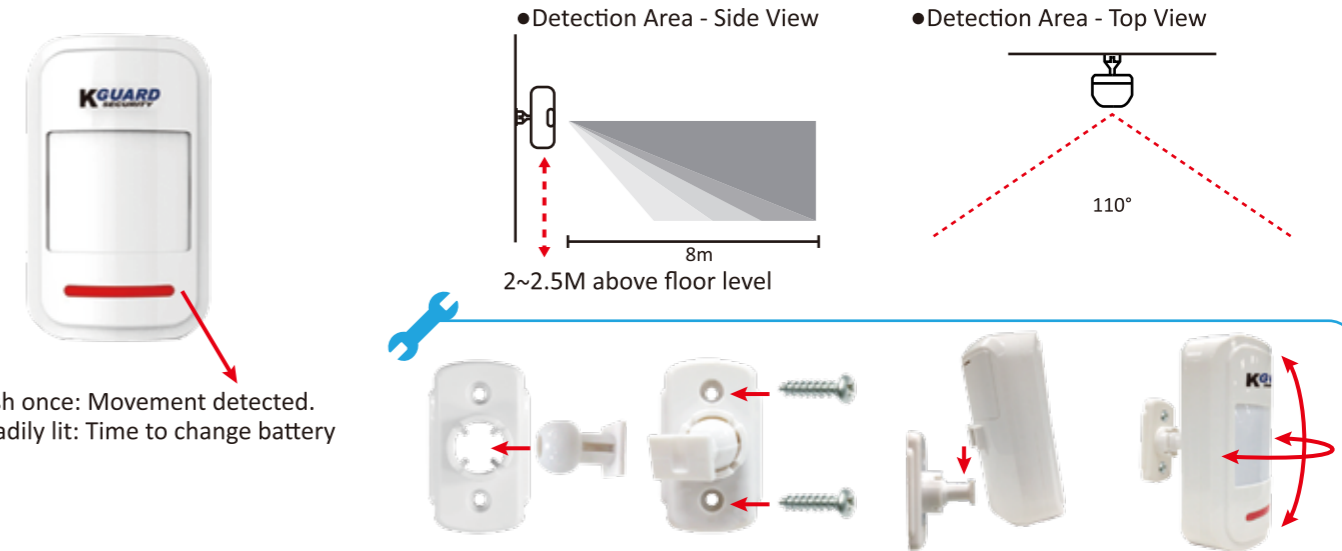


Please set up and install your KGUARD Control Unit first before installing wireless alarm kit

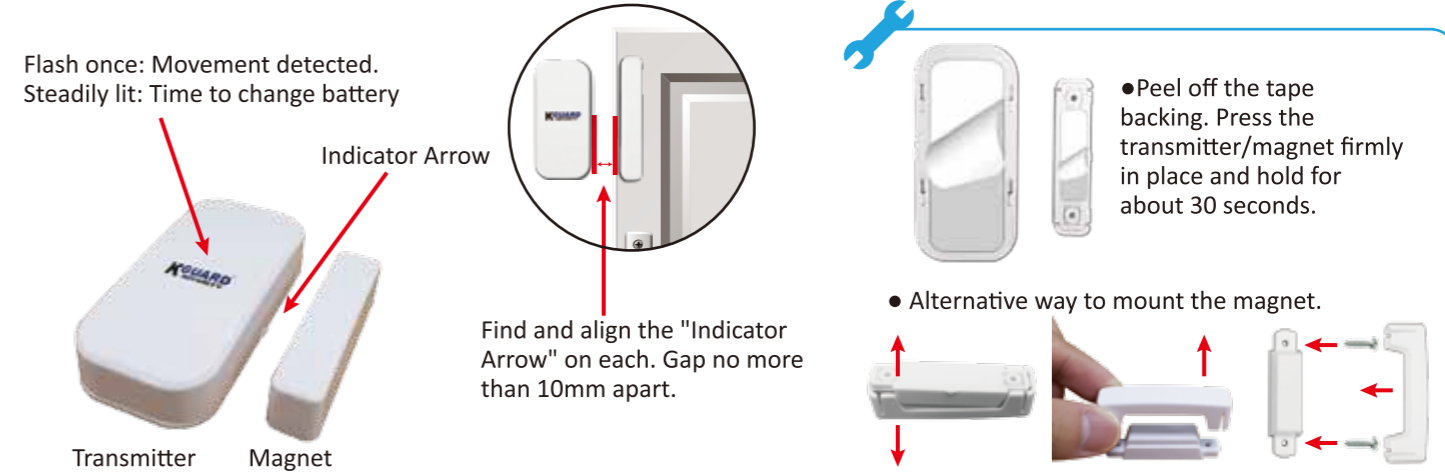
### Siren



### PIR Motion Sensor



### Door/Window Sensor



### Key Fob

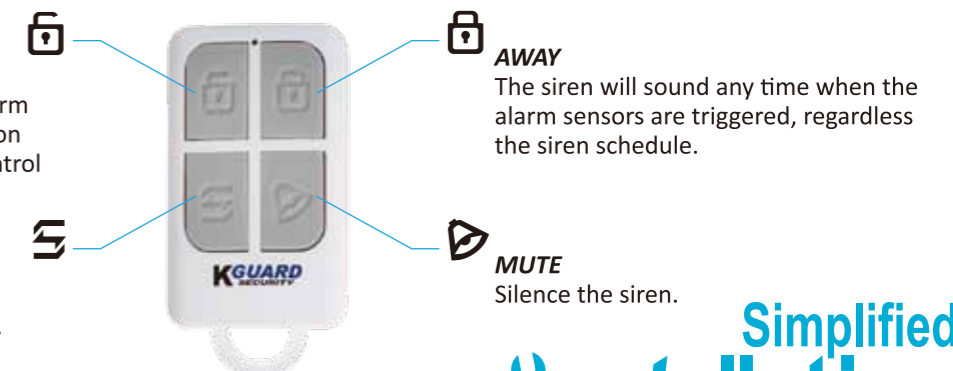
Press and hold the button on Key Fob for at least 2 seconds.

#### HOME

The siren will sound when the alarm sensors are triggered only based on siren schedule set in KGUARD Control Unit.

#### SOS

Activate the siren immediately, including recording, sending push notifications and email alerts, etc.



## How to Install/replace battery?

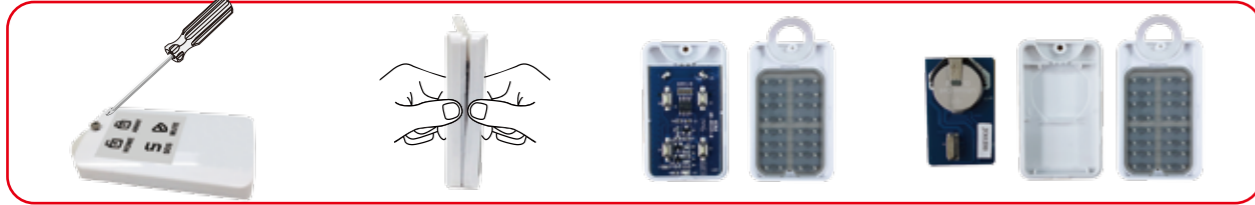
Door/Window Sensor (12V23A Alkaline Battery x 1 piece)



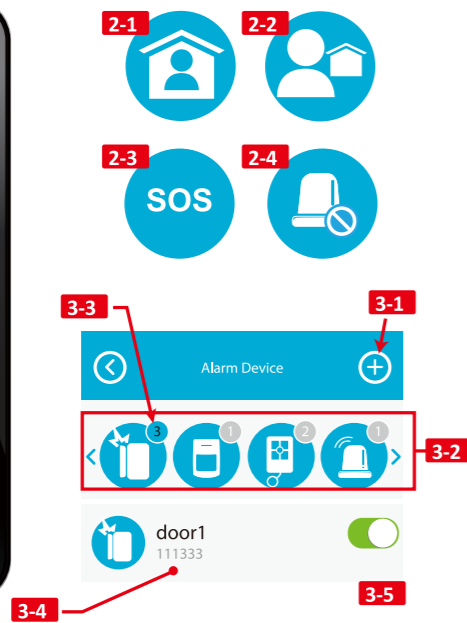
PIR Motion Sensor (AAA Alkaline Battery x 3 Pieces)



Key Fob (CR2016 Button Cell Lithium Battery x 2 Pieces)



Using KViewLink App If you have not downloaded KViewLink App, see ※.



1. Available for KGUARD PLUS Series DVR (e.g. EL431, EL831, EL1631), IP Camera (e.g. PLM00) or NVR.
2. Security mode, same functions as the KGUARD PLUS Series key fob (e.g. PLK00).
- 2-1. HOME Mode: The siren will sound anytime when the alarm sensors are triggered, based on siren schedule set in KGUARD PLUS Series DVR, IP Camera or NVR.
- 2-2. AWAY Mode: The siren will sound anytime when the alarm sensors are triggered, regardless the siren schedule. (The selected mode is encircled in red)
- 2-3. SOS: Activate the siren immediately, including recording, sending push notifications and email alerts, etc.
- 2-4. MUTE: Silence the siren.
3. Wireless Alarm Menu
- 3-1. Add new alarm devices.
- 3-2. Alarm device list
- 3-3. The number of added alarm devices
- 3-4. Tap to edit the name of the alarm device.
- 3-5. Enable/disable the added alarm device.
4. Silence the siren.

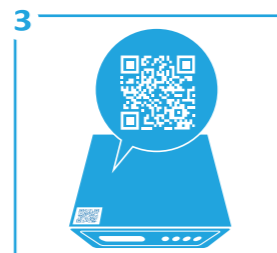
## How to download KViewLink App?※



1. Scan QR Code on DVR, IP Camera or NVR.



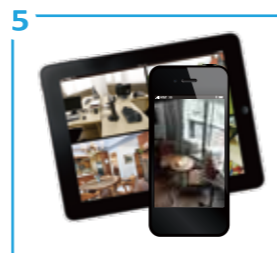
2. Tap on KViewLink and download app.



3. Scan QR Code again.



4. Type in password & tap on OK.



5. Start remote viewing.

## Trouble Shooting

Q: I could not get the alarm kit to work.

A: Check if the Alarm Antenna is plugged into the RJ9 port on KGUARD Control Unit.

Check if the connection status of alarm antenna is displayed as "Connected" on KGUARD Control Unit.

Check if the distance between alarm sensors and the antenna is out of range.

If problems persist, restore "Alarm" to its factory default setting on KGUARD Control Unit and reboot. It takes about 3 minutes to detect the Alarm Antenna after reboot.

Q: The status of alarm antenna is displayed as "Disconnected" on KGUARD Control Unit.

A: Check if the Alarm Antenna is plugged into the RJ9 port on KGUARD Control Unit.

If problems persist, restore "Alarm" to its factory default setting on KGUARD Control Unit and reboot. It takes about 3 minutes to detect the Alarm Antenna after reboot.

Q: Siren does not sound when alarm sensors are triggered.

A: Check if the alarm sensor is set to associate with the siren.

Check if siren schedule is defined.

Check if the siren is plugged to the power outlet.

Check if KGUARD Control Unit is currently set to "Home" mode. (See "Using KViewLink App" for details. The current status is encircled in red)



Q: I could not receive push notifications on my smartphone when alarm sensors are triggered.

A: Check if KGUARD Control Unit is connected to the Internet successfully.

Check if KViewLink App is installed on smartphone.

Check if Push Notification is enabled on KGUARD Control Unit and KViewLink App.

Q: I could not receive e-mail alerts when alarm sensors are triggered.

A: Check if KGUARD Control Unit is connected to the Internet successfully.

Check if E-mail Setting on KGUARD Control Unit is configured correctly.

Q: How to add additional KGUARD alarm devices (siren, key fob, door/window sensor, PIR motion sensor, etc.) to existing group?

A: Open KViewLink App. Go to "Wireless Alarm Menu" and add new alarm devices by scanning the QR Code on alarm devices.

**NOTE:** This equipment has been tested and found to comply with the limits for Class B digital device, pursuant to part 15 of the FCC Rules. These limits are designed to provide reasonable protection against harmful interference in a residential installation. This equipment generates, uses and can radiate radio frequency energy and, if not installed and used in accordance with the instructions, may cause harmful interference to radio or television reception, which can be determined by turning the equipment off and on, the user is encouraged to try to correct the interference by one or more of the following measures:

- Reorient or relocate the receiving antenna
  - Increase the separation between the equipment and the receiver
  - Connect the equipment into an outlet on a circuit different from that to which the receiver is connected
  - Consult the dealer or an experienced radio/TV technician for help
- ※ Modifications not approved by the party responsible for compliance could void user's authority to operate the equipment.  
 ※ This device complies with part 15 of the FCC Rules. Operation is subject to the following two conditions:  
 (1) This device may not cause harmful interference.  
 (2) This device must accept any interference received, including interference that may cause undesired operation.