

QRT-501

IE Operation Manual

Contents

Log In	5
Main Screen	6
Task Bar.....	7
Right Panel Control.....	8
Configure the Camera Settings.....	9
Device Basic Information.....	10
View the Device Information.....	10
Change the Device Name	10
Adjust the Date & Time Settings.....	10
View the Record Schedule.....	11
Format the TF Card.....	11
Alarm Service Settings	12
Configure the Alarm Settings.....	12
Configure the Email Settings	13
Configure the FTP Settings	13
Network Configuration	14
Configure the Basic Network Settings	14
Configure the WLAN Settings	15
Configure the DDNS Service Settings	15
PTZ Configuration	16
Configure the PTZ Settings	16
User & Device Management	16
Configure the Users Settings	16
Restore the Default Settings.....	17
Reboot the Device	17
Backup the System Configurations	18
Restore the System Configurations	18
Update the Device Firmware.....	18
Playback.....	19

Safety and Regulatory Info

Safety Information



Warning

This is the symbol for indicating any potential hazard, risk or condition requiring special attention. The user needs to refer to the important operating and maintenance or servicing instructions.



Caution

The lighting flash with an arrow head symbol, in an equilateral triangle, is intended to alert the user. There is dangerous “voltage” presence near by the product’s enclosure which may be risk of person.

Safety Precautions

1. Read the user manual carefully before attempting to install the camera and keep the manual for future reference.
2. Follow all instructions.
3. Always keep the glass lens clean to obtain the best picture quality. Clean only with dry cloth.
4. Do not install near water or heat sources such as radiators or other apparatus that produce heat.
5. Do not install the camera in places with high humidity.
6. Do not install the camera in places highly exposed to gas or oil.
7. Do not install the camera in places enclosed by metal. This may shield the electromagnetic waves and cause signal reception to fail.
8. Do not touch the camera with wet hands.
9. Do not expose the camera to radioactivity or place near medical equipment with radio waves.
10. Do not service the camera by yourself. Refer all servicing to authorized personnel.
11. Always handle the device with care.



Warning

To prevent fire or shock, DO NOT expose the unit to rain or moisture.



Caution

To reduce the risk of electric shock, DO NOT use other power cables other than the one supplied.

FCC Compliance Statement

This equipment has been tested and found to comply with the limits for a Class C digital device, pursuant to Part 15 of the FCC Rules. These limits are designed to provide reasonable protection against harmful interference when the equipment is operated in a commercial environment. This equipment generates, uses and can radiate radio frequency energy and, if not installed and used in accordance with the instructions, may cause harmful interference to radio communications. Operation of this equipment in a residential area is likely to cause harmful interference in which case the user will be required to correct the interference at his own expense.

Modifications not expressly approved by the manufacturer could void the user’s authority to operate the equipment under FCC rules.

Copyright

Copyright ©All Rights Reserved.

All other trademarks mentioned in this manual are trademarks of their respective companies.

Limitation of Liability

- This publication is provided “AS IS” without warranty of any kind, either expressed or implied, including but not limited to, the implied warranties of merchantability, fitness for any particular purpose, or non-infringement of a third party’s rights.
- This publication may include technical inaccuracies or typographical errors. Changes may be made to the information herein, at any time, for publication improvements and/or of the corresponding device(s).

Disclaimer of Warranty

In no event shall the supplier be liable to any party or any person, except for replacement or reasonable maintenance of the product, for the cases, including but not limited to the following:

- Any damage or loss, including but without limitation, direct or indirect, special, consequential or exemplary, arising out of or relating to the device;
- Personal injury or any damage caused by inappropriate use or negligent operation of the user;
- Unauthorized disassemble, repair or modification of the device by the user;
- Any problem, consequential inconvenience, or loss or damage, arising out of combining the system with the devices of a third party;
- Any claim or action for damages, brought by any person or organization being a photogenic subject, due to violation of privacy with the result of pictures from a surveillance camera, including saved data, for some reason, becomes public or is used for the purpose other than for surveillance.

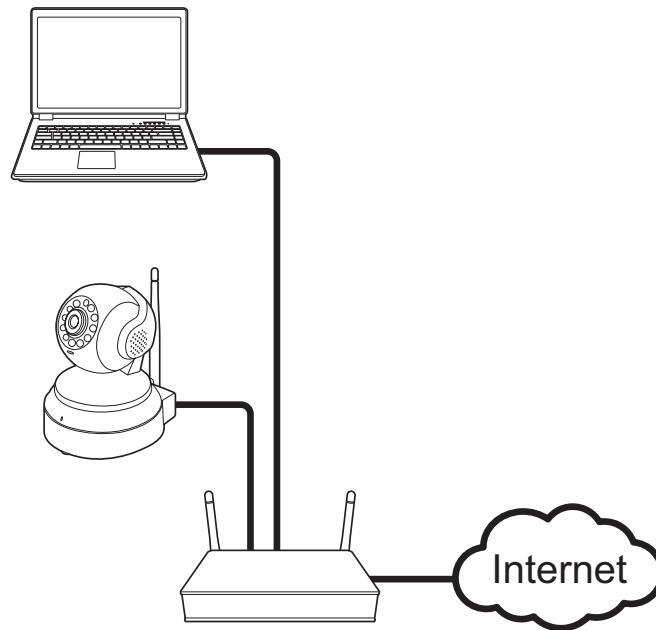
Web Client

Use Web Client to remotely access the camera and configure the settings of camera.

NOTE: : Ensure that the computer has a web browser, such as Internet Explorer or Safari, installed.


Before accessing Web Client for first time, you have to establish a connection from the camera to the wired router in order to quickly obtain the IP address of your camera. You can also modify the IP address and, if necessary, modify the default gateway to the new address.

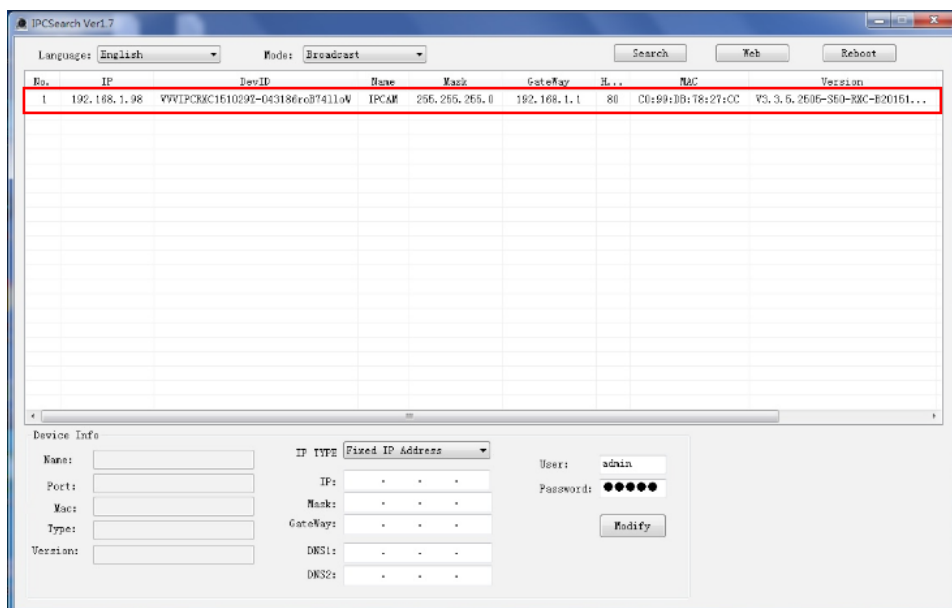
1. Connect the camera to the router using an RJ45 cable. Then connect your notebook to the same router using another RJ45 cable.



2. Download and install the IPCSearch software to your notebook.

NOTE: : The IPCSearch software is available at <http://www.kguardsecurity.com/global/p/wi-fi-network-camera-qrt-501/>.

3. Double-click the **IPCSearch** icon ( IPCSearch) to open the IPCSearch software.
4. The program lists the camera by IP address. Double-click on the camera IP address field to open the camera Web Client on your PC default web browser.




NOTE: : To configure the camera IP address, modify the necessary parameters and click **Modify** to save the settings.

Web Client

Log In

1. Enter the login name and password.
2. Click **Sign in** to login.

A screenshot of the web client login interface. It features a light gray background with a black border. The form contains three input fields: 'User' with the text 'admin' entered, 'Password' which is empty, and 'Language' with a dropdown menu showing 'English'. Below the fields are two buttons: 'OCX Download' in orange text and 'Sign in' in blue text.

User
admin

Password


Language
English ▼

OCX Download Sign in

NOTE:

- The default user name and password are “**admin**”.
- If you log in IE browser for the first time or the live view is not properly display on the screen, click **OCX Download** to download the OCX software and then install it on your computer.

IMPORTANT: To access your camera remotely, verify the following:

- Be sure to perform port forwarding first before browsing using the domain name or designated DDNS address.
- You have set the DDNS address of your IP camera. Go to  > **DDNS Service Settings** > **DDNS Host**.

Web Client

Main Screen

After you login to Web Client, click **Plugin Mode** to enter the Main Screen.

NOTE:

- To view the live view with the quick control panel screen, click **Motion-JPEG Mode**.
- To search and play the recorded videos, click **TF card video playback online**. Refer to “Playback” on page 19.



The Live screen appears.



Right Panel Control

Task Bar





Live View

Web Client

Task Bar


To access the common functions, click the respective icon shown on the task bar.



- Click  to enable the audio function. You can hear the live audio from the camera via PC if the audio setting is set to ON. Click it again to disable the audio function.
- Click  to enable the talk function. You can talk between the PC and camera if an audio device connected. Click it again to stop the talk function.
- Click  to start record manually. The video recording starts. Click it again to stop the manual recording.
- Click  to take a snapshot.



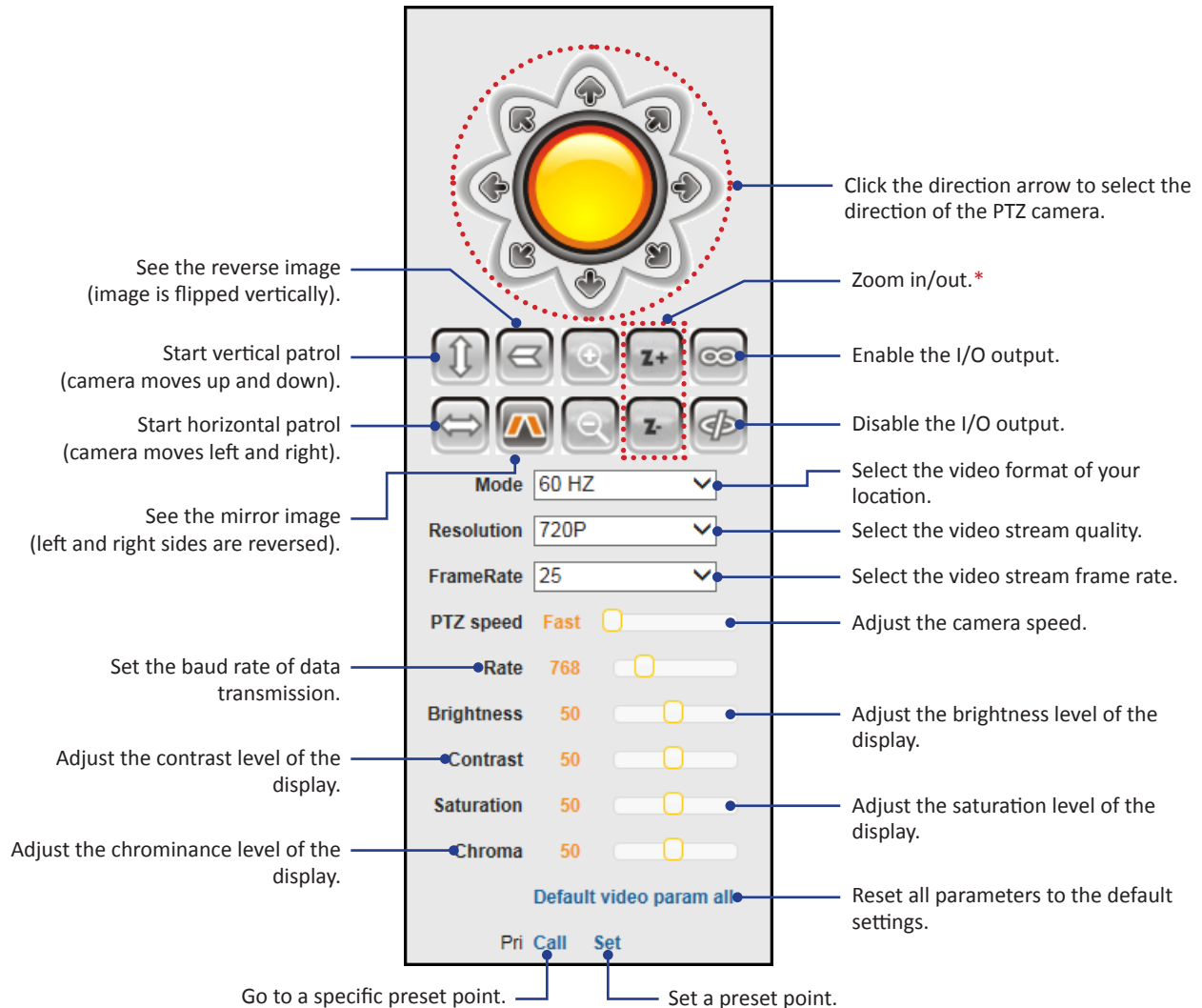
Click **Save** to save the captured image into your computer.

- Click  to access the Settings page.

Web Client

Right Panel Control

You can use the Panel Control to access the PTZ Control panel and customize the display settings.

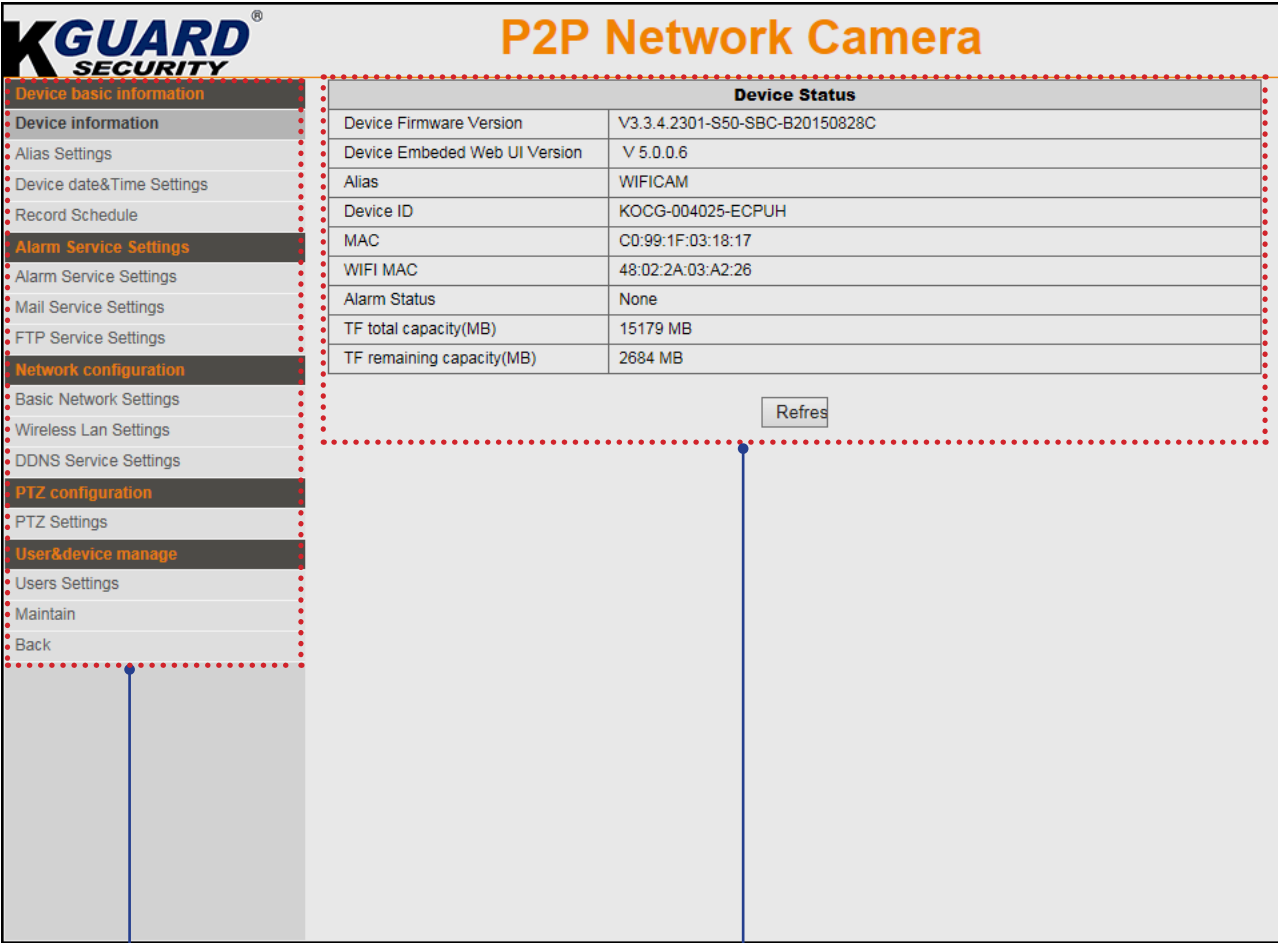


NOTE: (*) Not supported in QRT-501.

Web Client

Configure the Camera Settings

Click  tab to configure the camera settings.



KGUARD[®] SECURITY

P2P Network Camera

Device Status	
Device Firmware Version	V3.3.4.2301-S50-SBC-B20150828C
Device Embeded Web UI Version	V 5.0.0.6
Alias	WIFICAM
Device ID	KOCG-004025-ECPUH
MAC	C0:99:1F:03:18:17
WIFI MAC	48:02:2A:03:A2:26
Alarm Status	None
TF total capacity(MB)	15179 MB
TF remaining capacity(MB)	2684 MB

Refresh

Main menu

Menu option/setting/status

NOTE: When all settings are complete, do the following:

- Click **Submit** to save all the settings.
- Click **Refresh** to refresh the settings.

Web Client

Device Basic Information

Select this menu option to view the device information, customize the device name, and configure other general settings.

View the Device Information

Click **Device information** to view the camera information including the firmware version, Web UI version, device name and ID, MAC address, WIFI MAC address, alarm status, memory card total capacity, and available free space on the memory card.

Device Status	
Device Firmware Version	V3.3.4.2301-S50-SBC-B20150828C
Device Embedded Web UI Version	V 5.0.0.6
Alias	WIFICAM
Device ID	KOCG-004025-ECPUH
MAC	C0:99:1F:03:18:17
WIFI MAC	48:02:2A:03:A2:26
Alarm Status	None
TF total capacity(MB)	15179 MB
TF remaining capacity(MB)	2684 MB

Refres

Change the Device Name

Click **Alias Settings** to customize the camera name. Enter the new name in the *Alias* field.

Alias Settings	
Alias	<input type="text" value="WIFICAM"/>

SubmiRefres

NOTE: The default device name is “WIFICAM”.

Adjust the Date & Time Settings

Click **Device date&Time Settings** to configure the date and time settings.

Device date&Time Settings	
Device Clock Time	2016-1-27 16:43:37
Device Clock Timezone	(GMT+08:00) Beijing, Chongqing, Hong Kong, Urumqi ▼
	<input type="button" value="Sync with PC Time"/>

SubmiRefres

Device Clock Time: Display the current date and time.

Device Clock Timezone: Select the time zone in your location.

Sync with PC Time: Click to synchronize the date and time settings with your PC clock.

Web Client

View the Record Schedule

Click **Record Schedule** to manage the memory card and configure the recording settings to be stored in the memory card.

NOTE:

- It is recommended to use a TF card with size of at least 4GB, Class 6.
- The TF card is not included in the package. It is sold separately.
- The device supports up to 64GB TF card.

Record Schdule	
TF total capacity(MB)	15179 MB
TF remaining capacity(MB)	2679 MB
TF state	TF Card Recording... <input type="button" value="Format"/>
Timer recording	<input checked="" type="checkbox"/>
<input type="button" value="Submi"/> <input type="button" value="Refres"/>	

TF total capacity(MB): Display the total size of the memory card.

TF remaining capacity(MB): Display the available free space on the memory card.

TF state: Display the state of the memory card.

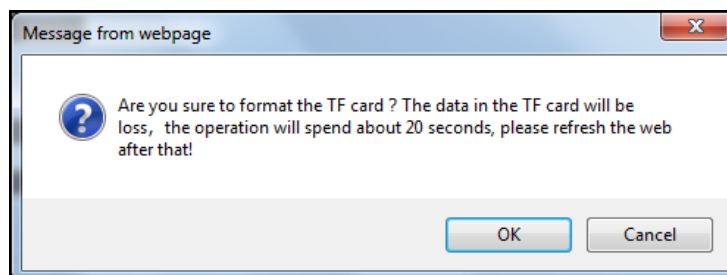
Timer recording: Check the box to record video continuously.

Format the TF Card

Click **Record Schedule > Format** to format the memory card.

Record Schdule	
TF total capacity(MB)	15179 MB
TF remaining capacity(MB)	2679 MB
TF state	TF Card Recording... <input type="button" value="Format"/>
Timer recording	<input checked="" type="checkbox"/>
<input type="button" value="Submi"/> <input type="button" value="Refres"/>	

A confirmation message appears on the screen. Click **OK** to confirm. All data will be deleted if formatted.



NOTE: Do not remove the memory card while card formatting is in progress.

Web Client

Alarm Service Settings

Select this menu option to configure alarm, email, and FTP server settings.

Configure the Alarm Settings

Click **Alarm Service Settings** to customize the alarm settings.

Alarm Service Settings	
Motion Detect Armed	<input checked="" type="checkbox"/>
Motion Detect Sensitivity	1 <input type="button" value="v"/> The smaller the value, the more sensitive
Alarm Input Armed	<input checked="" type="checkbox"/>
Trigger Level	Low <input type="button" value="v"/>
Alarm trigger event	
IO Linkage on Alarm	<input type="checkbox"/>
Send Alarm Notification by Mail	<input type="checkbox"/>
Upload Image on Alarm	<input type="checkbox"/>

Motion Detect Armed: Check this box to enable the motion detection alarm function.

Motion Detect Sensitivity: Select the motion detection sensitivity rate.

NOTE: This option is only available when the *Motion Detect Armed* function is enabled.

Alarm Input Armed: Check this box to enable the external alarm function.

Trigger Level: Select the alarm trigger level.

NOTE: This option is only available when the *Alarm Input Armed* function is enabled.

Check this box to activate the following action when the motion is detected or the alarm is triggered.

- **IO Linkage on Alarm:** Check this option to enable alarm output. You will receive an I/O message notification on your smartphone when the alarm sensor is triggered.
- **Send Alarm Notification by Mail:** Check this option to send a notification email.
- **Upload Image on Alarm:** Check this option to upload the snapshots to the FTP server.

Web Client

Configure the Email Settings

Click **Mail Service Settings** to configure email settings. When the email settings are properly configured, the system will automatically send a notification email when events occur.

Mail Service Settings	
Sender	<input type="text" value="username@server.com"/>
SMTP Server	<input type="text" value="smtp.server.com"/> <input type="button" value="Please select"/>
SMTP Port	<input type="text" value="25"/>
Need Authentication	<input checked="" type="checkbox"/>
SSL	<input type="checkbox"/>
SMTP User	<input type="text" value="username@server.com"/>
SMTP Password	<input type="password" value="••••••••"/> Do not use special characters(~!@#\$\$%^&*())
Receiver 1	<input type="text" value="username@server.com"/>
Receiver 2	<input type="text"/>
Receiver 3	<input type="text"/>
<input type="button" value="Test"/>	
<input type="button" value="Submi"/> <input type="button" value="Refres"/>	

Sender: Enter the email address of the sender.

SMTP Server: Enter the SMTP Server of the sending email server.

SMTP Port: Enter the SMTP port of the sending email server.

Need Authentication: Check the box to verify the user settings.

SSL: Check the box if your email server needs the SSL verification.

SMTP User: Enter the user name of the sender.

SMTP Password: Enter the password of the sender.

Receiver 1/2/3: Enter the email address where the notification email is to be sent. You can set up to 3 email addresses.

Test: Click to verify all settings are correct. The system sends an automated email message to your inbox.

NOTE: If you received the test email, it means the configuration parameters are correct.

Configure the FTP Settings

Click **FTP Service Settings** to configure the FTP server settings.

FTP Service Settings	
FTP Server	<input type="text"/>
FTP Port	<input type="text" value="21"/>
FTP User	<input type="text"/>
FTP Password	<input type="password"/>
<input type="button" value="Submi"/> <input type="button" value="Refres"/>	

FTP Server: Enter the FTP server address.

FTP Port: Enter the port number of the FTP server.

FTP User: Enter the user name of the FTP server.

FTP Password: Enter the password of the FTP server.

NOTE: Once the alarm is triggered, the system will automatically upload snapshots to the FTP server.

Web Client

Network Configuration

Select this menu option to configure the network and DDNS service settings.

Configure the Basic Network Settings

Click **Basic Network Settings** to configure how the camera connects to the network.

This camera provides two network connection options: Static IP (Static Address) and DHCP (Dynamic Address).

- **Static IP:** Select this connection if the camera is directly connected to a DSL modem and your ISP has supplied you with a predefined IP for your Internet connection.
- **DHCP:** Select this connection if the camera is connected to a router and DHCP is enabled.

Basic Network Settings	
Obtain IP from DHCP Server	<input type="checkbox"/>
IP Addr	<input type="text" value="192.168.1.112"/>
Subnet Mask	<input type="text" value="255.255.255.0"/>
Gateway	<input type="text" value="192.168.1.1"/>
DNS Server1	<input type="text" value="192.168.1.1"/>
DNS Server2	<input type="text" value="192.168.1.1"/>
Http Port	<input type="text" value="88"/>

Obtain IP from DHCP Server: Check this box to select DHCP network connection if the camera is connected to a router and DHCP is enabled.

IP Addr: Enter the static IP address.

Subnet Mask: Enter the subnetwork IP address.

Gateway: Enter the gateway IP addresss.

DNS Server1/2: Enter the DNS server address. **DNS Server1** is the primary DNS server and **DNS Server2** is a backup DNS server. Usually should be enough just to enter the **DNS Server1** server address.

Http Port: Enter the port number that you will use to log in to the device via the web.

NOTE:

- The **IP Addr**, **Subnet Mask**, **Gateway**, **DNS Server1**, and **DNS Server2** options are only available when the *Obtain IP from DHCP Server* function is disabled.
- Obtain these information from your network administrator or your Internet Service Provider (ISP).
- If you cannot use the either of the two default media.web ports, 80 or 38401, the specified port may be occupied by other programs or it is being blocked by your service provider. Enter other port number. In this case, you need to add the port number after the IP address. For example, if you set the Web Port as 85, you need to enter the IP address as "192.168.3.103:85".

Web Client

Configure the WLAN Settings

Click **Wireless Lan Settings** to configure the wireless network settings.

Wireless Lan Settings				
Wireless Network List	ID	SSID	auth	db
<div>Scan</div>				
Using Wireless Lan	<input checked="" type="checkbox"/>			
SSID	<input type="text" value="kguard_2.4G"/>			
Authentication	<div>WPA/WPA2 ▾</div>			
Share Key	<input type="text" value="99999999"/>			
<div>SubmiRefres</div>				

Scan: Click to search for available wireless router(s).

Using Wireless Lan: Check the box to use Wi-Fi function.

SSID: Enter the router name.

Authentication: Select the encryption type.

Share Key: Enter the password as you set in your router.

Configure the DDNS Service Settings

DDNS (Dynamic DNS) is a service that registers a domain name and the floating IP address with a DDNS server so that the domain name can be routed to the IP address even if the IP is changed in a dynamic IP system. Click **DDNS Service Settings** to configure the DDNS service settings.

DDNS Service Settings	
DDNS Service	<div>DynDns.org(dyndns) ▾</div>
DDNS User	<input type="text" value="username"/>
DDNS Password	<input type="password" value="••••••••"/>
DDNS Host	<input type="text" value="youdomain.f3322.org"/>
<div>SubmiRefres</div>	

DDNS Service: Select DDNS server type.

DDNS User: Enter the user name you registered on DDNS server.

DDNS Password: Enter the password you registered on DDNS server.

DDNS Host: Enter the domain name you registered on DDNS server.

NOTE: To apply a third party DDNS server provider such as a DynDNS domain name, visit <http://dyn.com/dns>. Follow the on-screen instructions to complete the account setup.

Web Client

PTZ Configuration

Select this menu option to configure the PTZ camera settings.

Configure the PTZ Settings

Click **PTZ Settings** to customize the camera cruise settings.

PTZ Settings	
PTZ speed	Fast ▼
Cruise Views	Always ▼
<div>Submi Refres</div>	

PTZ Speed: Specify the moving speed between two preset points.

Cruise Views: Specify the residence time for each preset point.

User & Device Management

Select this menu option to manage the user and device operations.

Configure the Users Settings

Click **Users Settings** to change the administrator password and create a new user profile. Only the **Administrator** can create an account.

NOTE:

- By default, there is one administrator account. The administrator account user name and password are “admin”.
- We suggest you change the password to protect your privacy.

Users Settings		
	User	Password
Administrator	admin	•••••
Operator		
Visitor		
<div>Submi Refres</div>		

Each user type has different access rights.

- **Administrator:** Full access rights to configure the camera parameters.
- **Operator:** Limited camera operations such as pan/tilt control.
- **Visitor:** View live video only.

NOTE: To create a new user, enter the user name and password. Then click **Submit** to register the user profile.

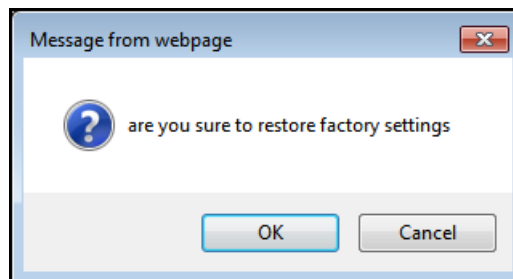
Web Client

Restore the Default Settings

Click **Maintain > Restore Factory Settings** to restore all parameters to the factory default settings.

Upgrade Device Firmware		
Restore Factory Settings	Restore Factory Settings	
Reboot Device	Reboot Device	
Backup Configuration	Backup Configuration	
Restore Configuration	<input type="text"/>	<input type="button" value="Browse..."/> <input type="button" value="Restore"/>
Upgrade Device Firmware	<input type="text"/>	<input type="button" value="Browse..."/> <input type="button" value="Upgrade"/>

A confirmation message appears on the screen. Click **OK** to reset the current parameters to the factory default settings.

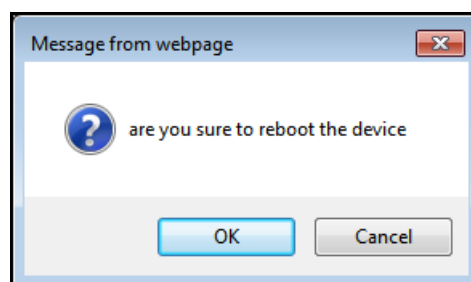


Reboot the Device

Click **Maintain > Reboot Device** to reset the camera.

Upgrade Device Firmware		
Restore Factory Settings	Restore Factory Settings	
Reboot Device	Reboot Device	
Backup Configuration	Backup Configuration	
Restore Configuration	<input type="text"/>	<input type="button" value="Browse..."/> <input type="button" value="Restore"/>
Upgrade Device Firmware	<input type="text"/>	<input type="button" value="Browse..."/> <input type="button" value="Upgrade"/>

A confirmation message appears on the screen. Click **OK** to reboot the system.



NOTE: Do not disconnect the device from the power supply during the rebooting process.

The device is rebooting. Don't shutdown it's power. Please waiting ... 23

Web Client

Backup the System Configurations

Click **Maintain > Backup Configuration** to save the current camera configurations to your computer.

Upgrade Device Firmware		
Restore Factory Settings	Restore Factory Settings	
Reboot Device	Reboot Device	
Backup Configuration	Backup Configuration	
Restore Configuration	<input type="text"/>	Browse... Restore
Upgrade Device Firmware	<input type="text"/>	Browse... Upgrade

You will be prompted to confirm whether you want to open or save the configuration file (specify the location). The default filename: config_backup.bin.

Do you want to open or save config_backup.bin (25.5 KB) from 1.163.67.157?	Open	Save ▼	Cancel	×
---	------	--------	--------	---

Restore the System Configurations

Click **Maintain > Restore** to restore your camera configurations.

Upgrade Device Firmware		
Restore Factory Settings	Restore Factory Settings	
Reboot Device	Reboot Device	
Backup Configuration	Backup Configuration	
Restore Configuration	<input type="text"/>	Browse... Restore
Upgrade Device Firmware	<input type="text"/>	Browse... Upgrade

On the *Restore Configuration* option, click the corresponding **Browse** button to select the configuration file to restore and click **Open**. The file is displayed on the field. Then click **Restore**.

Update the Device Firmware

Click **Maintain > Upgrade** to reset the camera.

Upgrade Device Firmware		
Restore Factory Settings	Restore Factory Settings	
Reboot Device	Reboot Device	
Backup Configuration	Backup Configuration	
Restore Configuration	<input type="text"/>	Browse... Restore
Upgrade Device Firmware	<input type="text"/>	Browse... Upgrade

On the *Upgrade Device Firmware* option, click the corresponding **Browse** button to select the firmware file and click **Open**. The file is displayed on the field. Then click **Upgrade** and wait until the upgrade process is complete.

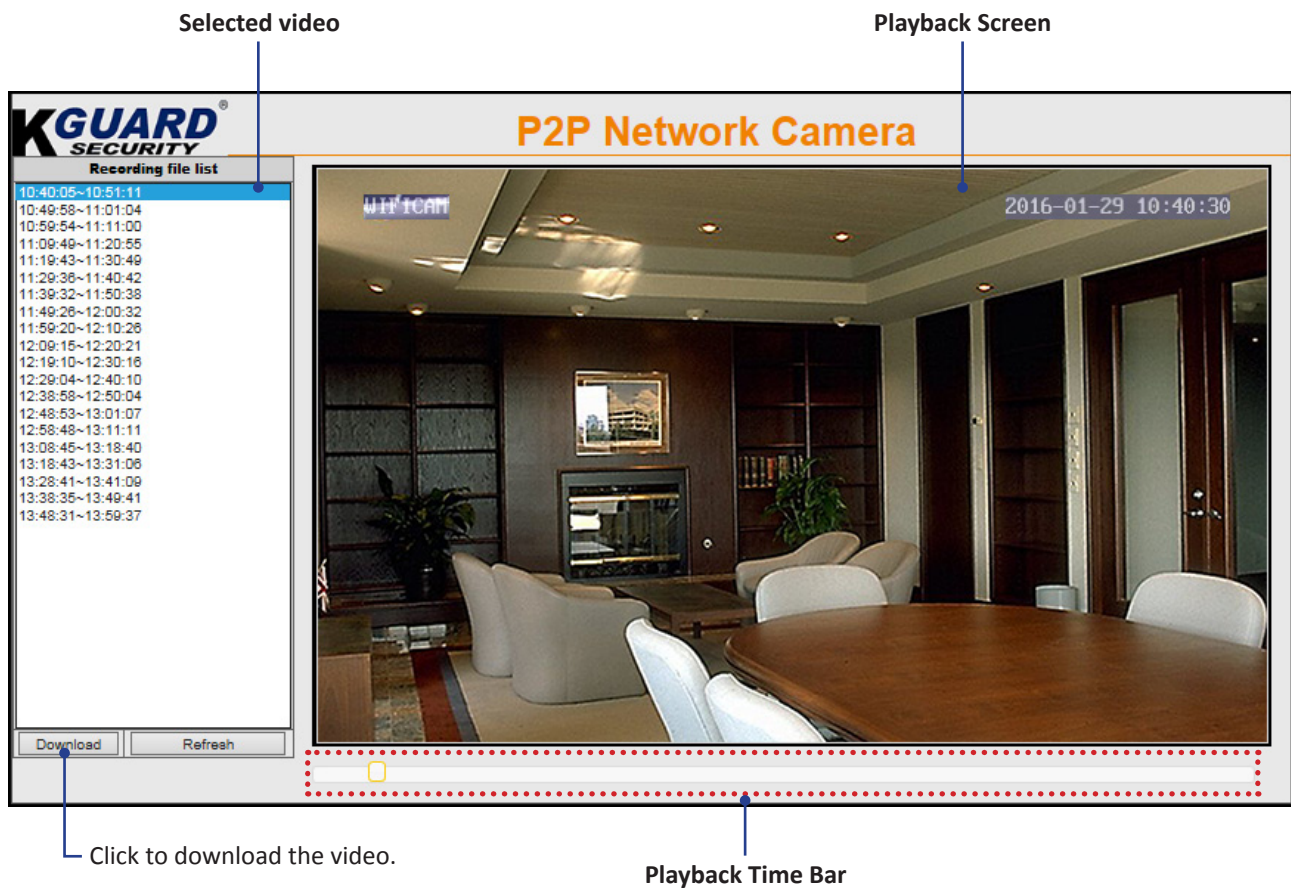
NOTE: Any interruption of the firmware update may cause permanent damage to your camera.

Web Client

Playback

After you login to Web Client, click **TF card video playback online** to search and play the recorded files stored in the memory card.

Double-click the file that you want to play. The playback automatically starts.





Customer Support

KGUARD INFORMATION CO., LTD.

Address: 4F, No.113, Jian 2nd Road,
Jhonghe District, New Taipei City 23585, Taiwan

TEL: +886-2-8228-6080

FAX: +886-2-8221-6857

Email: support@kguardsecurity.com

USA Technical Support Contact

TEL: 1-949-450-0052

Email: support@kworldcomputer.com