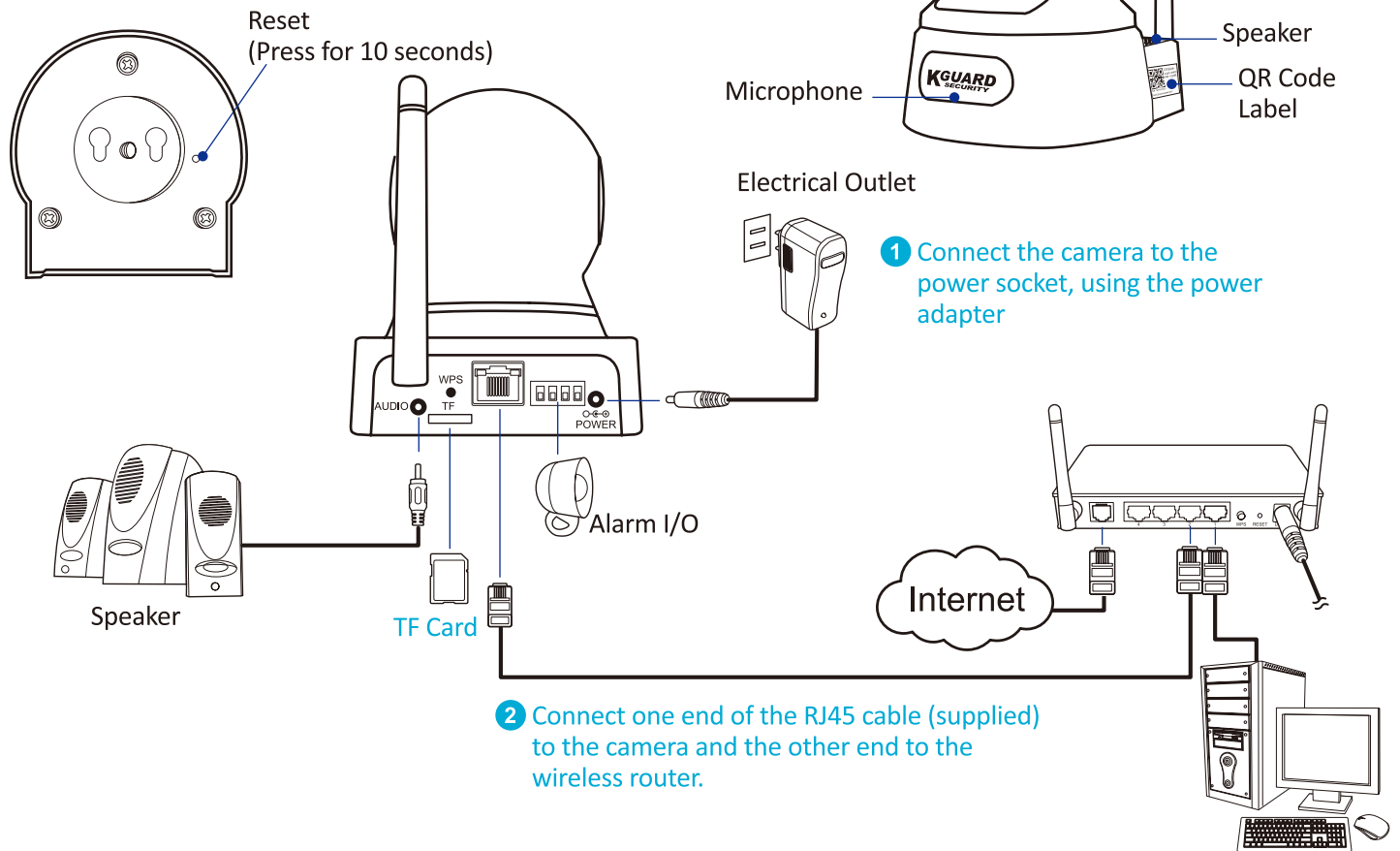


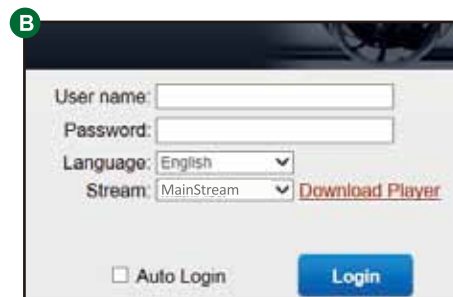
Connecting Camera to Router/Modem

DHCP (Dynamic Address)

your camera is connected to a router and DHCP is enabled.



- 3 Make sure your camera and computer are connected to the same router.
- 4 Insert the CD (supplied) to your PC's CD drive. Click on Search IP. (or go to <http://www.kguardsecurity.com/global/support/>)
- 5 The program lists the camera by IP address. Double-click on the camera's IP address field (picture A)
- 6 •Enter the user name and password (picture B)
NOTE: The default user name is "admin" and password is "123456"
•Click Login



Connecting Mobile/Pad to camera

- 1 Open the App Store (iOS) or Play Store (Android).



KViewQR

App Store




Google Play



- 2 Open KviewQR application () and tap  (iOS) or tap  (Android) to add a device.

Use a bar code scanner to identify the camera. Do the following:

- a. Tap on the bar code  (iOS) or Scan (Android) to open the bar code scanner.
- b. Scan the bar code on camera.



iOS devices

- a) Enter the default camera password: "123456".
- b) Tap OK.
- c) Change the device name if necessary.
- d) Tap Save.



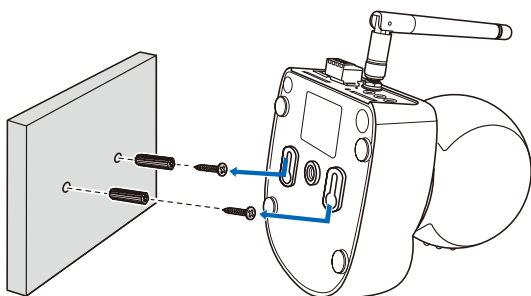
Android devices

- a) Enter the default camera password: "123456" and change the device name if necessary.
- b) Tap OK.



Mounting camera

Fixed Mounting



Dynamical Mounting

