



DVR USER MANUAL

EL425 / EL825

Default user name: admin

Default password:

About this Manual

The material in this document is for information purpose and is subject to change without prior notice. We made every effort to ensure that this user's manual is accurate and complete. However, no liability is assumed for any errors and omissions that may have occurred.

FCC Compliance Statement

This equipment has been tested and found to comply with the limits for a Class B digital device, pursuant to Part 15 of the FCC Rules. These limits are designed to provide reasonable protection against harmful interference in a residential installation. This equipment generates uses and can radiate radio frequency energy and, if not installed and used in accordance with the instructions, may cause harmful interference to radio communications. However, there is no guarantee that interference will not occur in a particular installation. If this equipment does cause harmful interference to radio or television reception, which can be determined by turning the equipment off and on, the user is encouraged to try to correct the interference by one or more of the following measures:

- Reorient or relocate the receiving antenna.
- Increase the separation between the product and receiver.
- Connect the product into an outlet on a circuit different from that to which the receiver is connected.
- Consult the dealer or an experienced radio/TV technician for help.

Declaration of Conformity

This device complies with part 15 of the FCC Rules. Operation is subject to the following two conditions:

1. This device may not cause harmful interference.
2. This device must accept any interference received, including interference that may cause undesired operation.

Copyright

Limitation of Liability

- This publication is provided "AS IS" without warranty of any kind, either expressed or implied, including but not limited to, the implied warranties of merchantability, fitness for any particular purpose, or non-infringement of a third party's rights.
- This publication may include technical inaccuracies or typographical errors. Changes may be made to the information herein, at any time, for publication improvements and/or of the corresponding device(s).

Disclaimer of Warranty

In no event shall the supplier be liable to any party or any person, except for replacement or reasonable maintenance of the product, for the cases, including but not limited to the following:

- Any damage or loss, including but without limitation, direct or indirect, special, consequential or exemplary, arising out of or relating to the device;
- Personal injury or any damage caused by inappropriate use or negligent operation of the user;
- Unauthorized disassemble, repair or modification of the device by the user;
- Any problem, consequential inconvenience, or loss or damage, arising out of combining the system with the devices of a third party;
- Any claim or action for damages, brought by any person or organization being a photogenic subject, due to violation of privacy with the result of pictures from a surveillance camera, including saved data, for some reason, becomes public or is used for the purpose other than for surveillance.

Safety Precautions

• Do not touch live electrical parts.

Electric shock can be avoided. Follow the recommended practices listed below. Faulty installation, improper grounding, and incorrect operation and maintenance of electrical equipment are always sources of danger.

• Do not try to install equipment outdoor, during strong wind and rain.

• Do not install or remove equipment outdoor, when raining.

- **Do not try to install or operate any equipment, during a thunderstorm.**

- **Always ground all electrical equipment and the work platform.**

Prevent accidental electrical shocks. Connect power source, control cabinets, and work platform to an approved electrical ground.

- **Always use the correct cable size.**

Sustained overloading will cause cable failure and result in possible electrical shock or fire hazard. Work cable should be the same rating as the factory.

- **Always keep cables and connectors in good condition.**

Improper or worn electrical connections can cause short circuits and can increase the chance of an electrical shock. Do not use worn, damaged, or bare cables.

- **Always avoid open-circuit voltage.**

The added voltages increase the severity of electric shock hazard.

- **Always wear insulated gloves while you adjust equipment.**

Electric power should be turned off and insulated gloves should be worn when making any equipment adjustment to assure shock protection.

- **Always wear protective clothing such as long sleeve shirts while you are installing or removing equipment.**

- **Always wear high, snug fitting shoes.**

- **Always wear clean clothes without grease or oil.**

- **Protect neighboring workers from exposure to arc radiation.**

- **Always wear long trousers or jeans while you are installing or removing equipment.**

- **Always wear safety helmet or hard hat and safety shoes before work.**

- **Always keep the equipment in dry places.**

- **Always wear safety harnesses/belt while you work in high places.**

- **Always wear dry clothing and avoid moisture and water.**

- **Always wear Public Safety Vest, while you work at night.**

- **Make sure all electrical connections are tight, clean, and dry.**

- **Make sure that you are well insulated to eliminate electric static charge.**

- **Always wear dry gloves, rubber-soled shoes, or stand on a dry board or platform.**

- **Always follow recognized safety standards.**

- **Always wear correct eye, ear, and body protection.**

- **Always have second person on-site, while you work in dark, poor ventilation, or high places.**

- **Make sure that you are well protected against arc flashes, mechanical injury, or other mishaps.**

- **Make sure that the polarity of wire is correct before installing equipment.**

- **Always handle equipment with care.**

- **Do not block the ventilation of equipment.**

- **Do not put the magnetic parts around the equipment.**

- **Do not put the objects on top of the equipment.**

Power

This DVR select the adaptor is DC12V; please make sure the power supply voltage before use the machine.

If do not use the machine for a long time, please turn off the power of DVR machine, and let the electric plug away from power socket.

Safety

This DVR only for indoor use, as for prevent short circuit or electric danger, please do not let the DVR in the raining or humid area. In case any solid or liquid inside the case of DVR, please turn off the power immediately, and ask the qualified technician check it before reboot the DVR. The DVR is the precision machine, there is nothing for repair by customers themselves in it, when it break down, please ask the qualified technician to check and repair, or contact with the agents of it.

Installation

Please keep the DVR in level for installation;

Pay attention to equipment ground;

For the first time to install the DVR, please make sure if the hard disk drive install or not;

Prevent to open the case and change the hard disk drive in electrified;

Propose to select the performance of hard disk drive will be 7200 rotating speed person second;

Please select the appropriate installation site, so let the air can be free flow inside the DVR, prevent the machine overheating;

Please do not install the DVR nearby the radiator, air chute etc. heat source;

or where the direct sunlight, too much dust, or mechanical vibration or attack.

INDEX

Chapter One Products Introduce.....	5
1.1 Specification.....	5
Chapter Two Hardware.....	6
2.1 H.264 standalone 4CH/8CH DVR.....	6
Chapter Three Operation	9
3.1 Operation instruction	9
3.2 Powering On	12
3.3 Shutdown	13
3.4 Multi Channel	14
3.5 Preview	14
3.6 Recording operation	15
3.7 Playback video	16
3.8 How to control PTZ.....	17
3.9 Alarm control	19
3.10 Display Adjust.....	19
Chapter Four Menu Operation Guide.....	20
4.1 Recording Setup	20
4.2 Camera	23
4.3 Network Setup.....	25
4.4 System Setup.....	30
4.5 System Management.....	34
Chapter Five IE Preview.....	36
5.1 Logging on interface	36
5.2 System Settings	38
5.3 State control	40
Chapter Six QMEYE phone software for use	43
6.1 Instructions of Android	44
6.2 Instructions of iPhone.....	62
Chapter Seven FAQ (Frequently Asked Questions)	79

Chapter one Products Introduce

1.1 Specification

Model No.	EL425	EL825
No. of Channel	4 Channels	8 Channels

Video		
Video Format	NTSC / PAL	
Video Input	4 BNC Inputs	8 BNC Inputs
Video Output	1 VGA, 1 BNC, 1 HD Outputs	
Video Output Resolution	VGA: 800x600, 1024x768, 1280x1024, 1440x900, 1920x1080, HD: 1080p	
Audio		
Audio Input	4 RCA Inputs	2 RCA Inputs
Audio Output	1 RCA Output	1 RCA Output
Recording		
Video Compression	H.264	
Recording Frame Rate	NTSC	120fps@CIF (360×240), 120fps@D1 (720x480), 120fps@WD1 (960×480) 240fps@CIF(360°240),120fps@D1(720°480),120fps@WD1(960°480)
	PAL	100fps@CIF (360×288), 100fps@D1 (720x576), 100fps@WD1 (960×576) 200fps@CIF(360°240),100fps@D1(720°480),100fps@WD1(960°480)
Recording Mode	Always / Manual / Motion Detection / Schedule	
HDD Interface	1 SATA	
HDD Support	Up to 3TB	
Network		
Plug & Play	Yes	
Network Interface	RJ45, 10M/100M	
Network Type	DHCP, PPPoE, Static IP	
Playback		
Local Playback	Max. 4 Channels Simultaneously	Max.8Channels Simultaneously
Playback Search	Date & Time / Event List	
Playback Mode	Play, Fast Forward, Fast Rewind, Slow Motion, Zoom	
General		
PTZ Control	RS485 Built-In, supports PELCO-P & PELCO-D	
Sensor & Alarm I/O Port	No	
IR Extender Port	No	
Backup Method	HDD, USB, Network	
Power Supply	12V/2A	
Operating Temperature (W/O HDD)	-10℃ to 50℃ (14°F to 122°F)	
Storage Temperature	-20℃ to 70℃ (-4°F to 158°F)	
Working Humidity	10%~90%	
Dimension (LxWxH) in mm	250x240x45	

Chapter Two Hardware

2.1 H.264 standalone 4CH/8CH DVR

2.1.1 Hard disk Installation

For the first use, please install the hard disk



1. Remove the screws on both sides of shell.



2. Extract from the next cover up.



3. Connect hard disk and mother board.



4. Fix the screw of hard disk



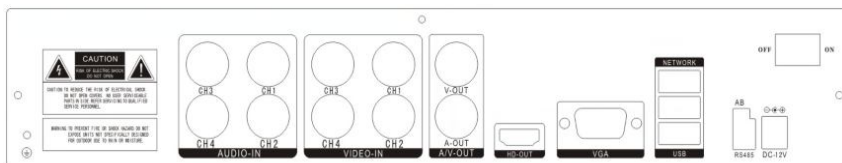
5. Close cover



6. Install the screws on both sides of shell.

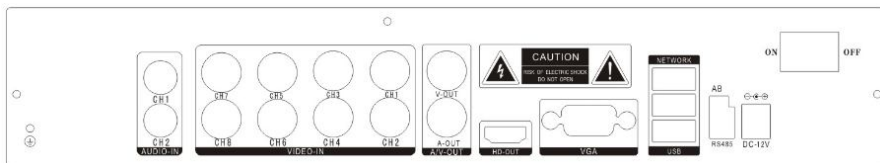
2.1.2 Rear panel

4CH



Interface	Description
VIDEO IN	4ch video input
AUDIO IN	4ch audio input
V-OUT	1ch video output
A-OUT	1ch audio output
VGA	VGA monitor
HD-OUT	HDMI interface
NETWORK	RJ45 for internet
USB	First USB for backup or upgrade system of DVR; Second USB for mouse
ON/OFF	Power supply switcher
DC-12V	Power adaptor port

8CH



Interface	Description
VIDEO IN	8ch video input
AUDIO IN	4ch or 8ch audio input
V-OUT	1ch video output
A-OUT	1ch audio output
VGA	VGA monitor
HD-OUT	HDMI interface
NETWORK	RJ45
USB	First USB for backup or upgrade system of DVR; Second USB for mouse
ON/OFF	Power supply switcher
DC-12V	Power adaptor port

Chapter Three Operation

3. 1 Operation instruction

3.1.1 Remote control AND Front panel keypad





Table:

S/N	Keypad Name	Operating instruction	S/N	Keypad Name	Operating instruction
1	【POWER】	Power ON/OFF	8	【ENTER】 【OK】	This button is used as “ enter ” and “ ok ” key in most circumstances
2	【MENU】	Access main menu			
3	【ESC】	Exit operation or enter upper menu Close soft keyboard Close current window Exit from current control Return to last menu Exit from PTZ control under preview state	9	【PTZ】	Access/exit from PTZ control under preview state
4	【◀◀】	Slow playback, 1/2×, 1/4×, 1/8× and single frame play	10	【+/-】	Volume or number increase/reduction Select item of the list
5	【▶▶】	Fast playback, 2×, 4× and 8× playback	11	【 ZOOM IN/OUT】	Lens control
			12	【 0~9 10+】	Digital input Corresponding; Channel is magnified in full screen under preview state
			13	【FN】	Short cut
6	【■】	Playback stop	14	【田】	Switching of 1/4/8Preview mode
	【▶/ 】	Play / Pause	15	【 ALARM】	Alarm reset
	【 ▲.▼. ◀ ▶ 】	Four-way to move the focal point in main menu, up and down to move in the normal window, to control pan driver to move in			

		the PTZ control windows			
	【REC】	To mode of recording	16	【CLEAR 】	Clear alarm
7	【SEARCH】	Search for playback time choosing			

3.1.2 How to use mouse of DVR (for right hand mouse)

1	Left key single click	To any function menu icon click the mouse left key into the menu
		To run the control point out operation
		Change again select frame or motion detection piece mode
		Click the assemble frame popping to pull down the list
		In the input frame, can select digit, character, lowercase, block letter, left click mouse on the keyboard of character input, that's. ← say move back, _ say blank, Shift say switch case .
		
2	Right click mouse	<p>Right click mouse, popping the shortcut menu, as follows;</p>  <p>Through the menu can be switching preview screen window mode, start replays, PTZ control. Four pictures playback mode, the point of the right mouse button, Can in a single picture, four pictures, eight pictures (8 road playback), twenty four picture, thirty two picture, broadcast control switch view show or hide broadcast control bar.</p>

3	Double click left button	To run the ActiveX Control ActiveX special operation, For example, double click the certain item of record listed file, then the system will playback the segment record video.
4	Dragging the mouse	Depress the left key and dragging the mouse, banding select Motion detection area, depress right key of mouse and Dragging, cancel the banding select area. Dragging playback Progress Bar back and forth to dolly moves, to achieve the playback position adjustment. Dragging the audio and video regulation parameter bar dolly moves, to achieve the parameter adjustment.

3.2 Powering On

Boot-strap

If 【POWER】 pilot lamp off, please follow the operation step by step:

First step: if the power does not plug into, please plug into the power, then the DVR begin to start, by now, if the DVR still inactive, to enter the next step;



Second step: turn on the power supply of the DVR at the back panel, DVR begins to start.

If 【POWER】 pilot lamp to offer RED, press the 【POWER】 key, DVR begins to start.

set user: admin Password: Don't need to input

The video output mode of DVR 's the default setting is multi picture channel mode after starting the DVR , if the time of start the DVR is in the Timing Recording Setting, the DVR will automatically to start the Timing Recording function, the corresponding channel's recording pilot lamp will be light, the DVR is normal operation.

			
Button	Description	Button	Description
	Main Menu		PTZ control
	Wizard language		Alarm control
	Multi channel		Display setup
	Recording Control		Exit

	Playback Back up		
---	---------------------	---	--

If before starting, the system not to install hard disk, into the system, will tip: system didn't detect any hard disk connection!

Note:

In this dialog, you can select language and quickly set lots of parameters.



Generally, the hisilicon system includes the following 22 kinds of languages: simplified Chinese, English, Italian, Turkish, Thai, Russian, Japanese, French, Portuguese, Spanish, Hebrew, Traditional Chinese, Polish, Korean, Persian, German, Srpski, Czech, Greek, Arabic, Indonesia, Vietnamese language and so on.

3.3 Shutdown

◆ **There are two safety mode for Shutdown**

Enter **【Exit】**, select **【Power Down】**



◆ Abnormal shutdown

Through the rear panel to shutdown

During the DVR running, directly to turn off the power through the rear panel power switch, please avoid as much as possible to do it. (Especially while the DVR recording).

Directly to pull up the power cable of DVR

While the DVR running, directly to pull up the power cable of DVR, please avoid as much as possible to do it. (Especially while the DVR recording).

Caution: In some area, the power supply is irregularity, it will cause the DVR working not normal-operation, the DVR will be damaged in serious. In this surroundings, suggest select the stabilized voltage supply.

3.4 Multi Channel






1/4/8 preview screen mode switch

3.5 Preview

After log in system of DVR, system will automatically directly enter the preview mode

In the preview picture, you can see the overprint date, time, channel name, if the date and time is not correct show on the picture, re setting the date. There is a alarm input mode icon. (the meaning of every kind of icon as following table)

Channel picture attention

1		Channel is video when channel video pictures showed this symbol	2		Channel happen when dynamic test, channel video pictures showed this symbol
3		Channel open sound, the channel video pictures showed this symbol			

3.6 Recording operation

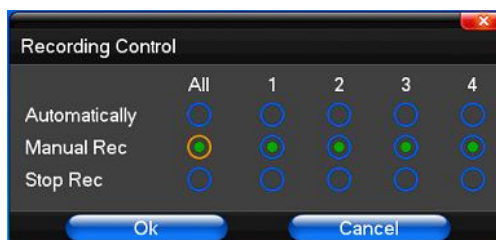
Customer according needs to select the different kind of recording mode in this system. For the different kind of recording mode you set, the channel will be showed the mark on everyone channel.

Manual recording

Note: Manual recording operational requirement the user should have “recording” permission. Please make sure the hard disk drive has been installed and it has been formatted.

1) Input manual recording operation menu

Single click right key of mouse or In main menu=> recording control can into manual recording operation menu. Under preview mode, press REC key or on the Remote controller unit key into recording control operation menu, as follows:



2) The explanation of manual recording operation menu

【manual Rec】 Priority level highest, no matter currently what status of every channel, after carry out the manual press, corresponding channel will be record common in progress;

【Automatically】Setting channel recording by setting condition to record under Timing, Motion detection and Alarm in Recording Setting;

【Stop Rec】 All video channel stop recording;

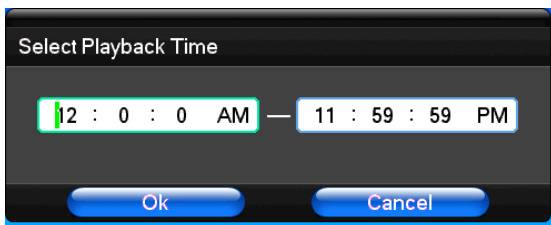
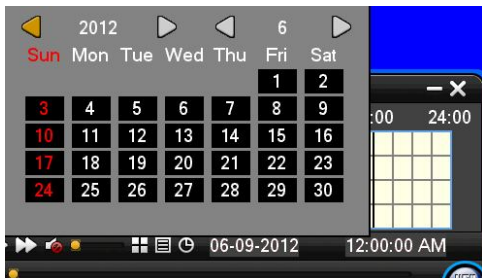
3.7 Playback video



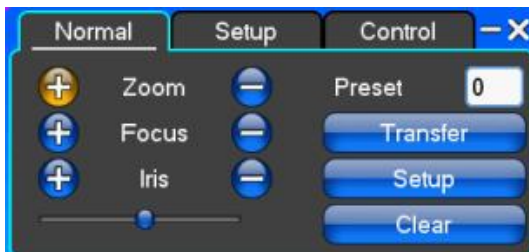
Button	Description	Button	Description
	Synchronous/asynchronous play		Hide / display list
	Speed slow		recording date
	Speed normal		Recording Date
	Speed fast		Select Playback Time
	Sound off/on		Play/pause/stop
	Voice adjustment		rewind
	1/4/8 screen(switch image)		

Note:

- 1) During playback the Playback Tool will show the file playback speed, channel, timing, playback speed etc. information in the Playback control panel;
- 2) Can't same time to select the Fast forward operation function in over 2 channel, only progress in anyone channel;
- 3) Can drag the Playback Speed toolbar by mouse;
- 4) In this dialog you can select the video precise to the second.



3.8 How to control PTZ



【Zoom】 Lens in the current play far closer picture, use the mouse wheel also can undertake variable times control.

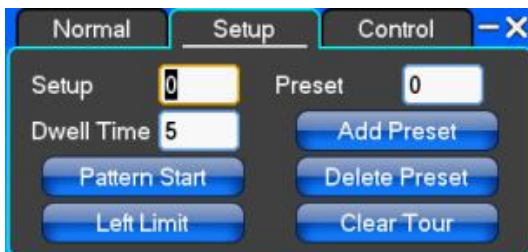
【Focus】 Slight adjusting the focal length

【Iris】 Aperture size adjustment

【Speed】 Through the slider adjust rotation step interval, PTZ mainly used to control direction operation, the step length of turning the faster PTZ.

【Preset】 Adjust the camera Angle, direction , the corresponding input and clicking on 【setup】 button, preset points will be set in the present PTZ.

Input preset points and click on 【Transfer】 button, the camera will be transferred to the preset point corresponding position. Click 【clear】 button, this preset points will be cleared



【Setup】Click 【Pattern Start】 the trajectory of said no corresponding, click the 【 Add Preset 】 and 【 Delete Preset】 , 【Clear Tour】 the cruise lines.

【Pattern Start】begin to track record, was registered date 【Pattern Stop】, thus set up from the corresponding track circuit.

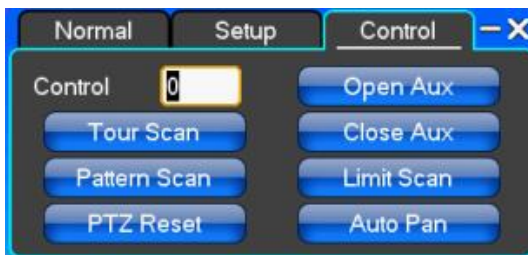
【Left Limit】Began to limit scanning Settings, was registered date 【 right Limit 】 , thus set up corresponding limit scanning.

【Add Preset】 Add preset points to the cruise lines.

【Delete Preset】 Cruise lines from deleting preset points.

【Clear Tour】 Remove the cruise line designated.

Note: some equipment doesn't fully support all function, depending on the specific PTZ equipment



【Control】 PTZ Control

【Tour Scan】 Point between cruise control.

【Pattern Scan】 Track patrol control.

【PTZ Reset】 Remove all Settings, original reset to the original state.

【Limit Scan】 PTZ boundary scan control.

【Auto Pan】 Remove the cruise line designated

Note: some equipment doesn't fully support all function, depending on the specific PTZ equipment.

3.9 Alarm control



【Set Alarm】 Selection need protection channel, click confirm corresponding channel after in protection status

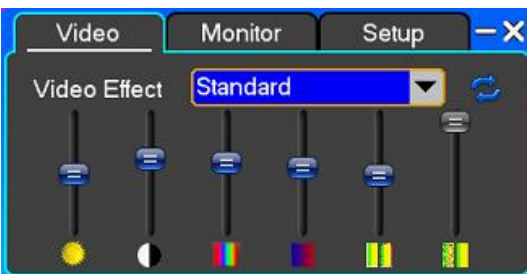
【Clear Alarm】 Remove protection condition, not alarm input to react

【Alarm Output】 Open the alarm output. In the premise of no trigger alarm input, user can operate the output. for example, some alarm switch is connected with a lamp, lamp is open when alarm is triggered

【All】 Can choose all the channels

3.10 Display Adjust

(1)Video

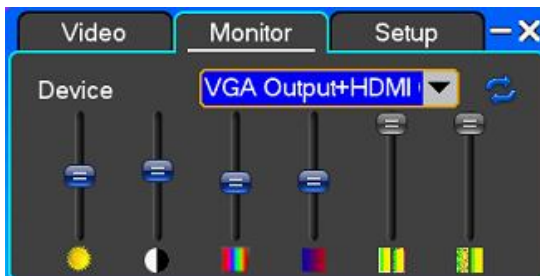


【Video Effect】 Optional: standard, downy, sharp, custom.

【Default】 Restoring default effect, for custom video effects, copy standard effect parameters.

Through the slider fluctuation sliding, respectively adjustable brightness, contrast and saturation, tonal, etc.

(2)Monitor

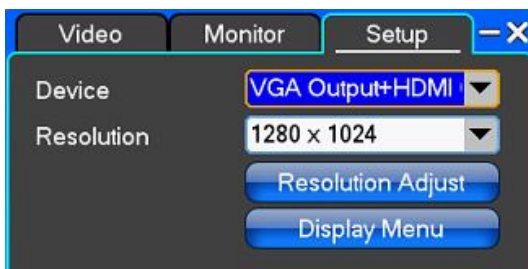


【Device】 Optional: VGA output, TV output etc display output device.

【Default】 Restoring default display parameters.

Through the slider fluctuation sliding, respectively adjustable brightness, contrast and saturation, tonal, etc.

(3)Setup



【Device】 The first generation of DVR: VGA output, TV output etc display output devices, the system may support multiple equipment and output.

The second generation of DVR: VGA Output + HDMI Output + TV Output.

【Resolution】 Setting the resolution of the display device.

The first generation of DVR default VGA resolution is 1024 x 768;

The second generation of DVR default VGA resolution is 1280 x 1024;

Chapter Four Menu Operation Guide

4.1 Recording Setup

(1) Recording Setup



【Channel】 Choose the need to install passage "whole" says setting all channels.

【Encoding Type】 CIF/HALF D1/D1,if the model is 960H,the encoding format maybe is 960H/D1/CIF,if the model is 1080P,the encoding format maybe is 1080P/720P, different models, different encoding format

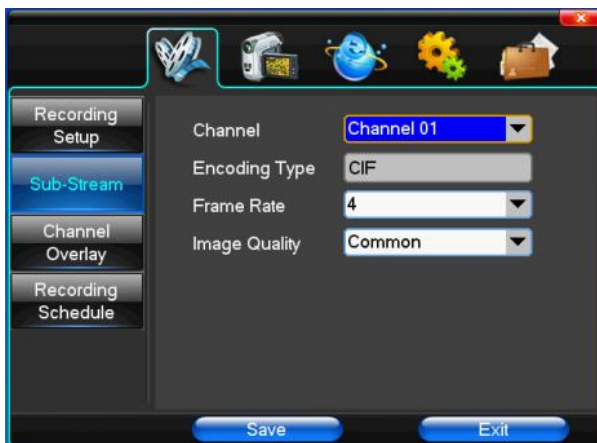
【Encoding Mode】 Including fixed rate, dynamic rate.

【Image Quality】 Client-side image quality, the higher the quality the clearer. Choice scope: minimum, low, general, high, highest

【Frame Rate】 Can click on the button manually input, 1 ~ 25 frames per second (PAL) or 1 ~ 30 frames per second (NTSC) continuous adjustable. 【Audio】 Can select close, open according to requirements

【Pre-Alarm Rec】 Can select close, open according to requirements

(2)Sub-Stream



【Channel】 Choose the need to install passage "whole" says setting all channels.

【Encoding Type】 you can select one coding mode in this page.

【Frame Rate】 Can click on the button manually input, 1 ~ 25 frames per second (PAL) or 1 ~ 30 frames per second (NTSC) continuous adjustable. 【Audio】 Can select close, open according to requirements. But now only support 1-5.

【Image Quality】 Client-side image quality, the higher the quality the clearer. Choice scope: minimum, low, general, high, highest.

(3)Channel Overlay



【Channel】 Choose the need to install passage "whole" says setting all channels.

【Channel Name】 Can manual corresponding input channel's name

【Channel Display】 Can choose according to the requirements of users don't use, the top-left corner, left, lower, middle and downward, upper, right, and lower.

【Time Display】 Can choose according to the requirements of users don't use, the top-left corner, left, lower, middle and downward, upper, right, and lower.

(4)Recording Schedule



【Channel】 Choose the need to install passage "whole" says setting all channels.

Each longitudinal row of every seven days a week, said the 24 hours a day manipulated said, mouse the left key click on the small square footage, setting time to clean it has chosen right-click drag video time.

4.2 Camera

When the system starts, the camera will detect the format of the video.

(1) PTZ Setup



【Channel】 Choose regional channels, Settings "whole" says setting all channels

【PTZ Protocol】 PTZ equipment communication protocol

It contains these options: Pelco_D、Pelco_P、LILIN、MINKING、STAR、VIDO、NEON、DSCP、HY、N-control、RM110、SAMSUNG, the default option is Pelco_D.

★**Note:** PTZ parameter Settings every channel need after completion in Settings of gc1318 alone.

【PTZ Address】 PTZ equipment address, digital range 0 to 255.

★**Note:** here with the address must be consistent ball machine address, we can't control the ball machine.

【Bit-rate】 PTZ equipment baud rate.

(2) Video Setup



【Video Mode】 Provide PAL and NTSC both formats video formats choice, modify after you must restart your system can take effect.

【Channel】 Choose to set the video Settings area passage "whole" says setting all channels

【Reserved Section】 Click Settings enter. The white areas for privacy area

【Buzzer Alarm】 Happen when video lost choice whether or not to allow buzzer warning

【Alarm Output】 Happen when video lost upcoming linkage selected channel corresponding alarm output

(3) Motion Detection



【Channel】 Choose need to set up mobile testing area passage "whole" says setting all channels

【Sensitivity Setting】 Can be set to give: minimum, low, general, high, highest

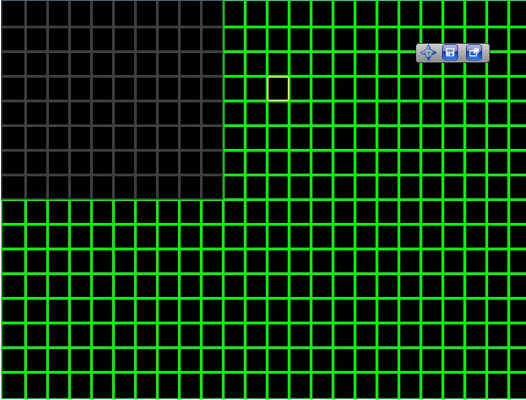
【Detection Area】 Click Settings enter.

Green area for dynamic test, grey areas design. ferroconcrete-brick undefended area for. Press the mouse left key to drag on the lower detection area to the right, press the mouse button clearance. Detection area drag The save and exit button can save Settings, some give up and quit button abandon modification.

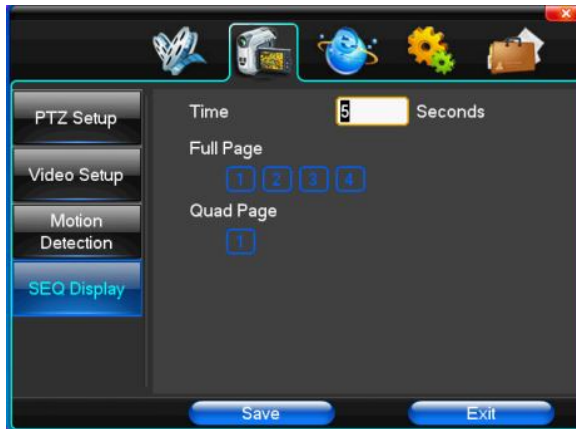
【Buzzer Alarm】 Occur when dynamic test on the buzzer whether to allow the alarm

【Trigger Recording】 That will happen when dynamic test on the linkage of selected channel fast ball trigger video

【Alarm Output】 In this passage setting user can be copied to the other channels, fulfill the same dynamic detection alarm Settings



(4)SEQ Display



【Time】 Screen switching interval.

4.3 Network Setup

(1)General Setup



【DHCP】After checked automatic assignment device will get IP address, subnet mask, the default gateway, the DNS server, etc

【UPnP】Can choose according to the requirement

【IP Address】Network logic address can according to the requirements set

【Subnet Mask】Server subnet mask

【Default Gateway】Server gateway

【DNS Server】DNS server addresses

【Server Port】Data port, initial socket for 7777

【HTTP Port】the default port for 80. If change, when using IE browser, need to monitor the IP address, adding new socket. If use IP address to 82, from the original browsing <http://192.168.0.19>, change for <http://192.168.0.19:82>.

【Handset Port】Network phones socket, the default is 5800.

(2)Dial-UP Setup



Tip: PPPOE dial-up successful, according to 【 PPPOE IP 】 shown on IP address, users can remote access hard disk video recorder. By nic LAN IP access.

The DVR support model:

Unicom: huawei E173,zhongxing MF100

Telecom: huawei EC150.huawei EC156.zhongxing MF583

"3G DIAL" have two modes with automatic and manual dialing, the operation follows as below.

1. Automatic Dialing

Select the Automatic Dialing in the interface of the following picture, fill the right information according to the operator where the 3G card belongs to and the 3G referred guide, It includes IPS names, AP, dial-telephone, ID and password, the interface shows as the other following picture (some IPS once be chosen, the other relative information has been already done, so you needn't fill any more, click "SAVE" directly). Then click "Save" directly. After having detected the 3G signal when DVR start, the system will dial up automatically.

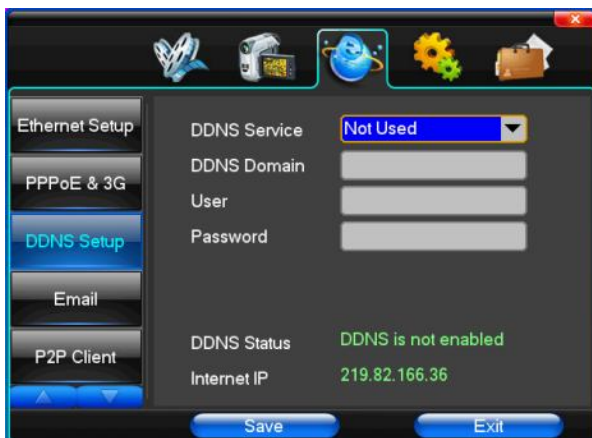
2. Manual Dialing

In the interface of following picture, users would fill the right information in the menu bar as same as Automatic dialing and click "SAVE". Then click "Dial-up" after saving successfully (The referred information would be saved still after the DVR restart, but you should click "Dial-up" again).

In these two modes, if the dial-up want success, first you should make sure that the 3G card is available. Since the 3G signal has been existed, the related menu bar will show the correct IP address; if failed, system will popup a window to show the wrong information.



(3)DDNS Setup



【DDNS Service】 Dynamic DNS provider website, Via DDNS server, it compatible with SODDNS,TODDNS, no-ip, DYNDNS.ORG. if you select toddns or soddns, you can customize your favorite domain name. it shows as following picture.



【DDNS Domain】 Dynamic domain name, soft keyboard and hard keyboard can be input.

【User】 Login domain name service provider website user name

【Password】 Login domain name service provider website password

Tip: through the dynamic DNS server. Support dynamic DNS.

(4)Email



【SSL Protocol】 Sending E-mail in use safety network connection

【Test Email】 Send an email to the recipient mailbox test

【Email Address】 The recipient's email address. Users can input two different email address.

【Send Email】 The sender email address .

【SMTP Server】 Send mailbox mail server

【Email Account】 The sender email address the corresponding account

【Email Password】 The sender email address of the corresponding email password

According to the customer request can be checked 【Video Setup 】and 【 □Motion Detection 】 sending emails.

Two can also choose.

Note: your sender email must support SMTP.

(5)P2P Client



【Cloud ID】 This ID is use for the mobile and the PC login.

【IE Web】 You can download the .apk from here.

(6)Access Control

S/N	Starting IP	Ending IP

Starting IP: 0 . 0 . 0 . 0
Ending IP: 0 . 0 . 0 . 0

Buttons: Add, Delete, Save, Exit

【List Rule】 According to the requirement to choose: don't use, allow access, refused to visit.

【Starting IP】 Display IP address started section

【Ending IP】 Display IP address end segments

【Add】 On the basis of the need for added

【Delete】 According to the need to delete

4.4 System Setup

(1)Time

Remote Controller: 0
Device Name:
Date Mode: YY/MM/DD
Time Mode: 24 Hours
System Date: 2013 - 9 - 17
System Time: 11 : 15 : 22
☐ DST
Buttons: NTP Setup, Set Time, Save, Exit

【Remote Controller】 Used in a remote device , remote control more hard disk video recorder occasions, only in remote controls address and hard disk video recorder Numbers identical to remote operation.

【Device Name】 According to the requirement to change name, easy to manage.

【Date Mode】 To choose Date display modes include MM/DD/YY,DD/MM/YY,YY/MM/DD.

【Time Mode】 To choose time display modes include 24-hour system and 12 hours to make

【System Date】 The current system date

【System Time】 The current system time

【DST】 Daylight-saving time, according to the requirement to choose

【NTP Setup】 Network Time Protocol Setup

【NTP】 You can select the server in the drop-down list

【Time Zone】 Select the format the date is displayed in including date, sun and moon June 21 years in three formats.

【Update Periods】 Default 30 minutes

【Set Time】 Confirm modification system of time

(2)HDD Management



【Disk Full】 When video disk full system how to deal with, "said system will be automatic coverage the earliest video files continue covering video," stop video "says system to stop the current video.

【File Time】 Says automatic generation video files interval, the set range 5-120 minutes.

【Recording Bit-rate】 Said the total rate of current coding

【Recording Time】 Said the storage devices systems installed in accordance with the current rate can store video of time.

Display the current hard disk attributes: types, hard disk, usable capacity total capacity. Click 【formatting】 , all storage file will be lost.

Tip: to format the hard disk before please stop system current all those videos.

(3)User Management



【User】 Characters in length up to 8 bytes, ignore trailing Spaces. It can be letters, Numbers, and other symbols. Allows up to eight users, user name may not be repeated.

【System Privileges】 According to the requirements set of functions need checked

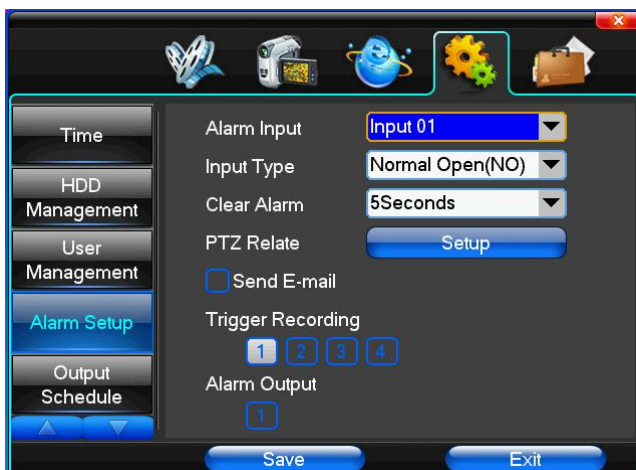
【Add User】Input need to add user, and input the account password and passwords. According to the button 【save】 to add user.

【Delete User】 Select the users need to delete, and click on the "yes" button to remove users

【Edit User】Choose need to modify user, and in user permissions bar needed under the function of check. According to the save button modified users.

【Edit Password】 Select the account, input to modify current user password, and enter the account password and confirmation password new. According to the button 【save】 for password changing. The password can be set to 0 ~ 8 bits

(4)Alarm Setup



【Alarm Input】 Choose corresponding alarm channel, "all" setup all channel said.

【Input Type】 Alarm input to often open/closed type choice (voltage output style)

【Clear Alarm】 Stop the current alarm video and alarm output, but not removal, can again trigger alarm.

【PTZ Relate】 When will the linkage happened alarm PTZ control

【Trigger Recording】 When will trigger happened alarm selected channel video.

【Alarm Output】 When will the linkage happened alarm corresponding alarm output

(5)Output Management



【Buzzer Output】 In the chosen time intervals have alarm input will start buzzer output.

【Send Email】 In the chosen time intervals have alarm input which will send relevant information, such as the alarm events, paparazzi pictures, equipment name, device ID, etc sent to user specifies the mailbox.

【Alarm Output】 In the chosen time intervals have alarm input will start alarm output

(6)Margin Adjust



By the function, you can adjust the distance between the display device and the picture edge.

4.5 System Management

(1)System Upgrade



Show the system hardware versions, software version, serial number, release date, cloud id and the two-dimensional code. Click **【software upgrade】**, the system began to automatically detect and upgrade file.

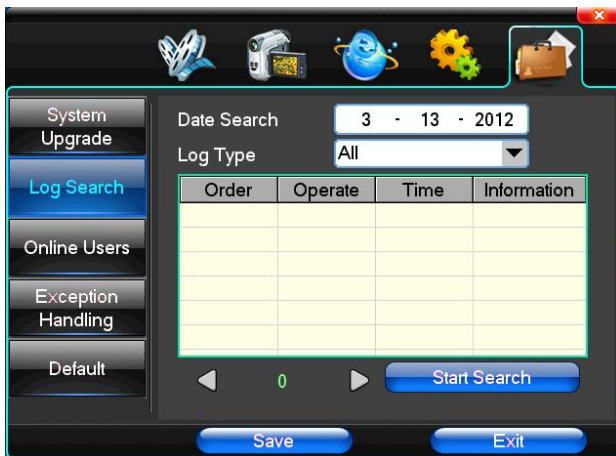
Cloud id and the two-dimensional code: mobile can use this to login DVR.

Note: Currently support upgrades: local USB mode, IE mode, the client software.

USB mode: former ensure USB device to connect upgrade normal, as upgrade program has copy USB devices in the root directory. According to the interface can upgrade operation hints.

Upgrade was successful, and the screen appears to restart operating hints. Equipment reboot after system that will enable the new software.

(2)Log Search



【Date Search】 Can search according to date

【Log Type】 Optional: all, operation log, set diaries, alarm log, error log

Note: according to the left, right arrow can move forward and content.

(3)Default



Restoring default can restore selected according to need. The system restore to the default configuration state out, can according to the menu options choose to restore the corresponding Settings.

Tip: menu color, language, time date format, video format, IP address, the user account, etc will not be restored.

(4)Exception Handling



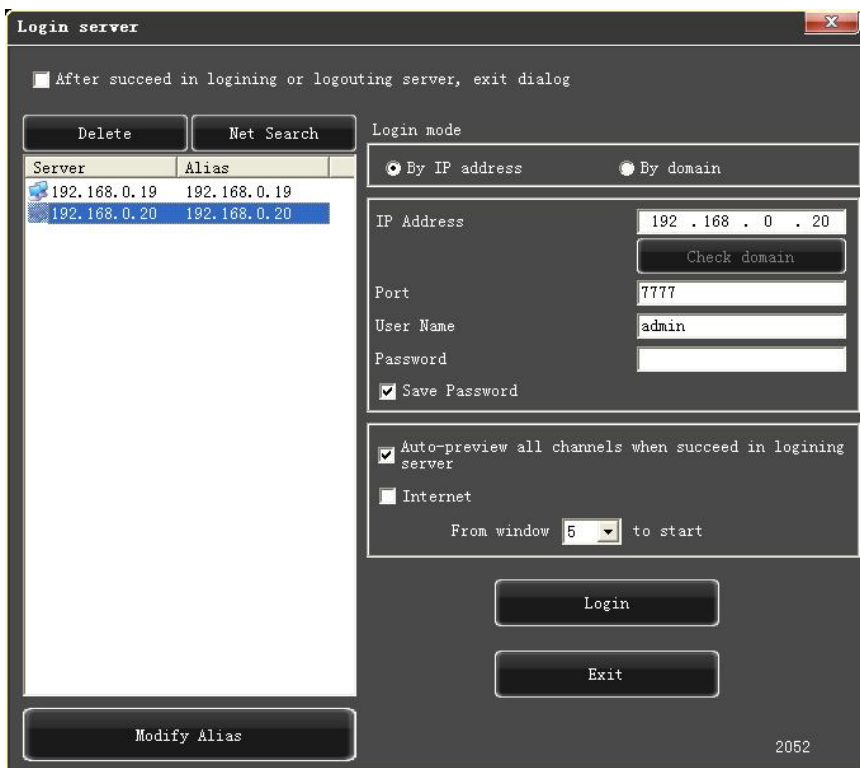
【Exception Type】 Choose abnormalities: hard disk full, hard disk errors, network connection.

【Buzzer】 When abnormality, choose whether to allow the buzzer hints.

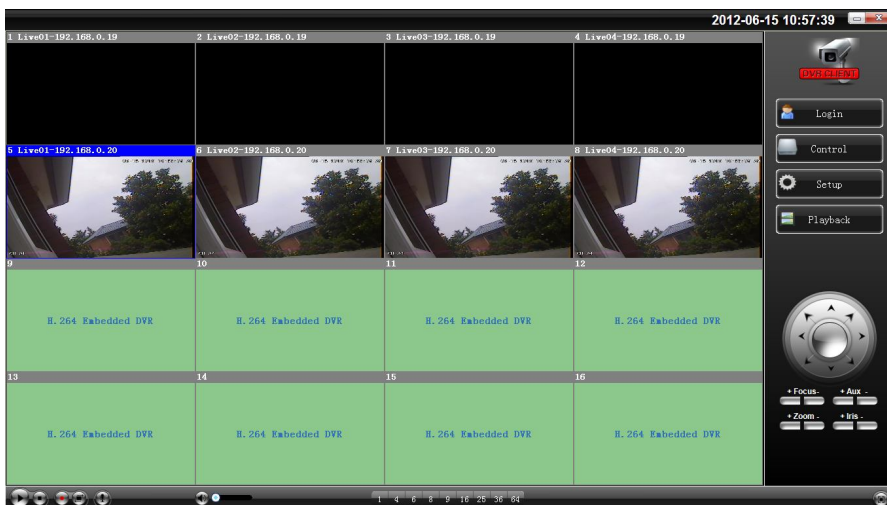
Chapter Five IE Preview

5.1 Logging on interface

To input the IP address




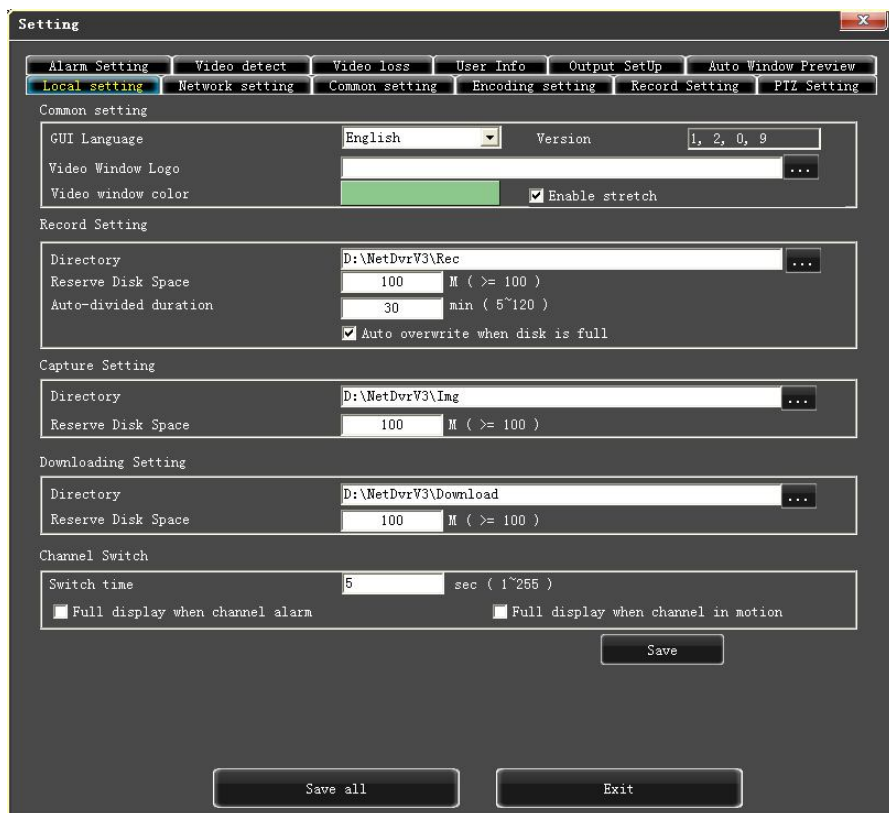
Pretermision IP address is 192.168.0.20



5.2 System Settings

Setup

Point  , As the picture ,You can set up language directly, After all to save you set.



The screenshot shows a 'Setting' window with a dark theme. At the top, there are several tabs: 'Alarm Setting', 'Video detect', 'Video loss', 'User Info', 'Output SetUp', 'Auto Window Preview', 'Local setting' (which is highlighted in blue), 'Network setting', 'Common setting', 'Encoding setting', 'Record Setting', and 'PTZ Setting'. Below the tabs, the 'Common setting' section is active, showing 'GUI Language' set to 'English' and 'Version' as '1, 2, 0, 9'. There are also fields for 'Video Window Logo' and 'Video window color' (a green bar), with an 'Enable stretch' checkbox checked. The 'Record Setting' section shows 'Directory' as 'D:\NetDvrV3\Rec', 'Reserve Disk Space' as '100 M (>= 100)', and 'Auto-divided duration' as '30 min (5~120)', with 'Auto overwrite when disk is full' checked. The 'Capture Setting' section shows 'Directory' as 'D:\NetDvrV3\Img' and 'Reserve Disk Space' as '100 M (>= 100)'. The 'Downloading Setting' section shows 'Directory' as 'D:\NetDvrV3\Download' and 'Reserve Disk Space' as '100 M (>= 100)'. The 'Channel Switch' section shows 'Switch time' as '5 sec (1~255)' and two checkboxes: 'Full display when channel alarm' and 'Full display when channel in motion', both of which are unchecked. At the bottom right is a 'Save' button. At the very bottom of the window are two large buttons: 'Save all' and 'Exit'.

Setting Category	Parameter	Value
Common setting	GUI Language	English
	Version	1, 2, 0, 9
	Video Window Logo	[Empty field]
	Video window color	[Green bar]
Record Setting	Directory	D:\NetDvrV3\Rec
	Reserve Disk Space	100 M (>= 100)
	Auto-divided duration	30 min (5~120)
	Auto overwrite when disk is full	Checked
Capture Setting	Directory	D:\NetDvrV3\Img
	Reserve Disk Space	100 M (>= 100)
Downloading Setting	Directory	D:\NetDvrV3\Download
	Reserve Disk Space	100 M (>= 100)
Channel Switch	Switch time	5 sec (1~255)
	Full display when channel alarm	Unchecked
Channel Switch	Full display when channel in motion	Unchecked

Setting

Local setting

Network setting

Common setting

Encoding setting

Sub-Encoding setting

Record Setting

PTZ Setting

Alarm Setting

Video detect

Video loss

User Info

Output Manage

Auto Window Preview

Channel

Channel 01

Protocol

Pelco D1

Address

1

(0~255)

Baudrate

2400 bps

Data bit

8

Stop bit

1

Parity

None

Save

Save all

Exit

Setting

Local setting

Network setting

Common setting

Encoding setting

Sub-Encoding setting

Record Setting

PTZ Setting

Alarm Setting

Video detect

Video loss

User Info

Output Manage

Auto Window Preview

Alarm input

01

☐ Send Email

Device type

Always on

Alarm delay

5

sec (5~255)

Enable record

1

2

3

4

Alarm output

1

Alarm Relate PTZ

Channel	Alarm Relate PTZ	Parameter
Channel:01	None	00
Channel:02	None	00
Channel:03	None	00
Channel:04	None	00

Save

Save all

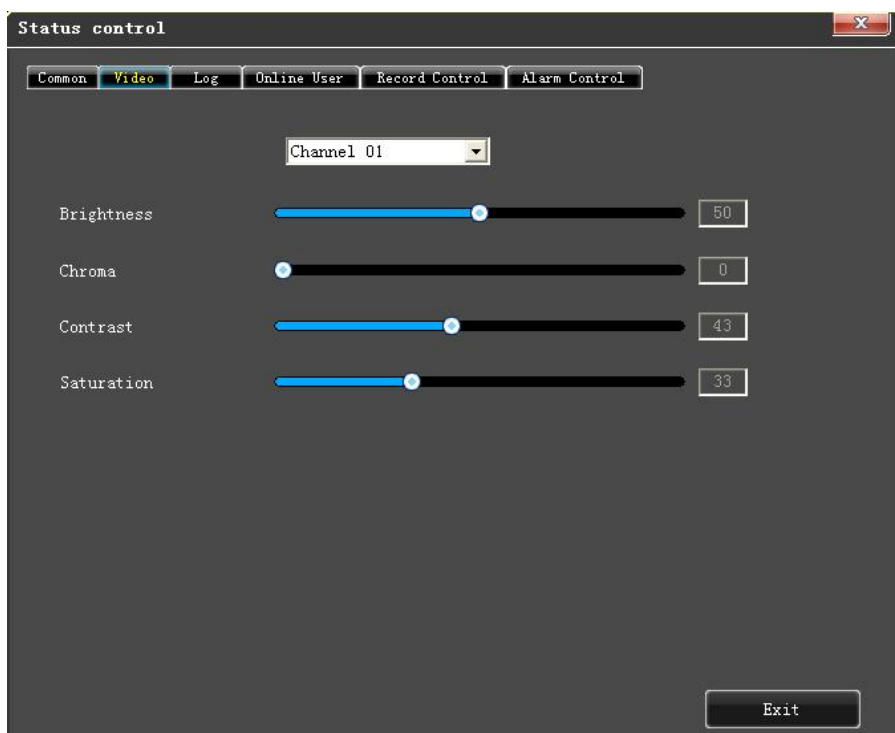
Exit

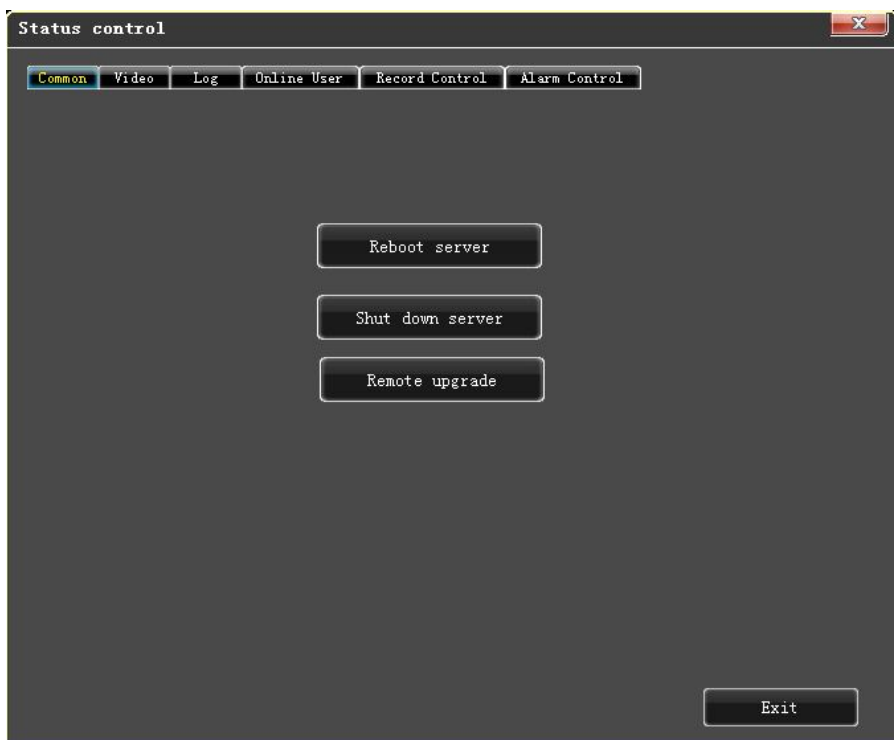
5.3 State control

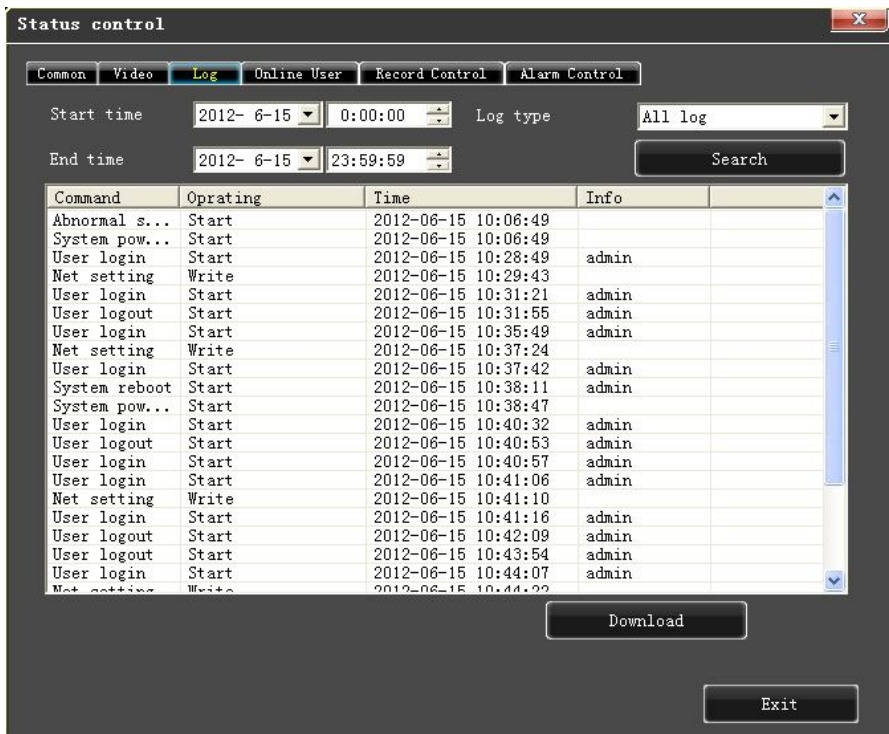
In state control you can set reboot server, close server, remote to go up

Remote upgrade: let PC file load in the system

Log: to inquire sometime the server's action







Chapter Six QMEYE phone software for use

This cloud service platform is the best mobile phone video during the internet era. It consists of front-end acquisition devices, platform servers, and remote view of three parts.

1) The acquisition of client software:

The client software can be got from the CD or <http://www.qmeye.net> . Each type of corresponding client software as follows.

1. **QMEYE.apk**: The smart phone monitoring client of Android operating system

2. **QMEYE.ipa**: The smart phone monitoring client of phone operating system

2) The instructions of three platforms is shown as follows.

1. android

2. iphone

6.1 Instructions of Android

6.1.1 Essential condition

1) Support the version 2.2 or above of Android system.

2) Support DVR platform versions:

Hisilicon v2.0.0.81 and higher.

6.1.2 Installation and operation instructions

Installation

Support two installation modes and the user can choose one way for installation.

1. Install online

Search QMEYE on himarket or google play and install online.

2. Install offline

Copy the QMEYE.apk installation package to Android phone through cable. In the specified directory find out the corresponding .apk , click the application installation (If there is not installed apk installer in the mobile phone, the user needs to download an apk installation software so that it can identify the apk package), and there will be program icons after finishing installing.


6.1.3 Login interface

6.1.3.1 Login interface

Open the software into the login interface, inputting the username and password and click button "login", then it will be login the application.

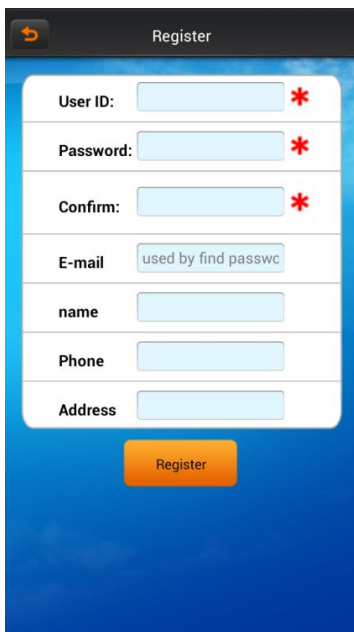


Icon description:

icon	Function description
	After select, it will go directly to the main menu when you log in again.

6.1.3.2 User register

Click the button "register" on the login menu, then will jump to the register interface.

A screenshot of a mobile application's 'Register' screen. The screen has a dark blue header with a back arrow icon and the title 'Register'. Below the header is a white registration form with a blue border. The form contains several input fields: 'User ID:', 'Password:', 'Confirm:', 'E-mail', 'name', 'Phone', and 'Address'. The 'User ID:', 'Password:', and 'Confirm:' fields each have a red asterisk icon to their right. The 'E-mail' field contains the text 'used by find passwc'. At the bottom of the form is an orange 'Register' button. The background of the screen is a blue gradient with a cloud pattern at the top.

Register

User ID: *

Password: *

Confirm: *

E-mail

name

Phone

Address

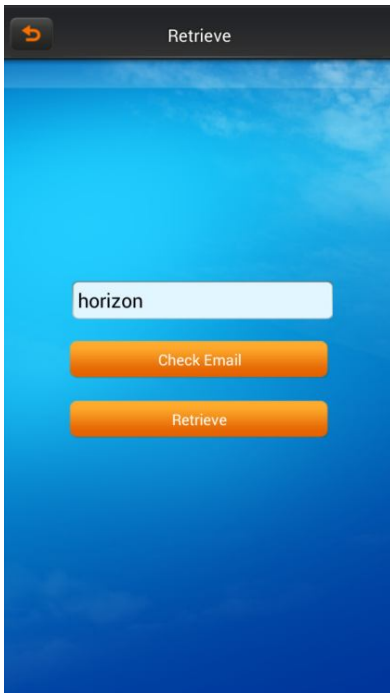
Register

Enter the register information, click "register" then will be registered.

Note: please enter the valid E-mail address in order to retrieve your password when you lost it.

6.1.3.3 Retrieve the password

On the register clicking the button "login" and jump to "retrieve password" interface.



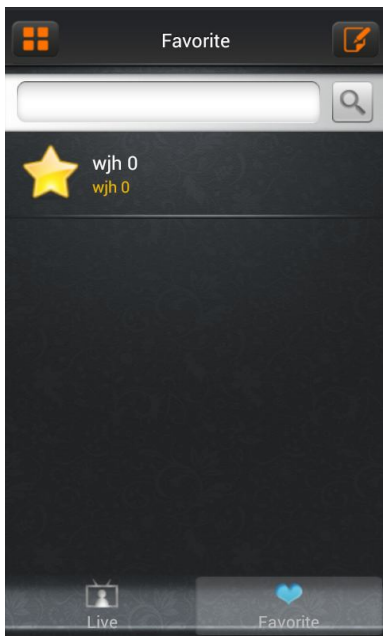
Input the username, click button "retrieve password".



If you have entered your name and email address when registering and the username has been occupied, then "retrieve password" information will be sent to the email address.

6.1.4 Real-time preview

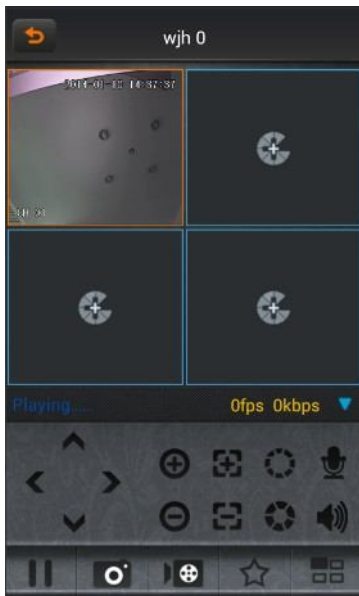
In the main menu, clicking "real-time preview

Click "Favorites" button, go to "collection management" interface


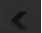












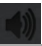





Click on the icon , favorites list change into editing state, click icon , you can delete your favorites.

Select one of the devices on "Live list" enters the video preview interface.



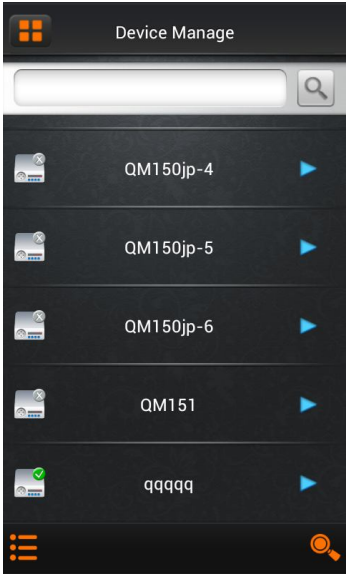
Button instruction:

icons	function instruction
	return to main menu
	move to the left
	move to the right
	move down
	move up
	enlarge
	narrow
	zoom out
	zoom in
	aperture enlarge
	aperture narrow
	start/ close intercom


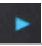

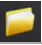


	start/ close speakers
	stop/ start
	snapshot
	start / close the local video
	favorites
	channel switcher

6.1.5 Device management

Click the button" device management" on the main menu and enter "device management" interface.

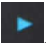


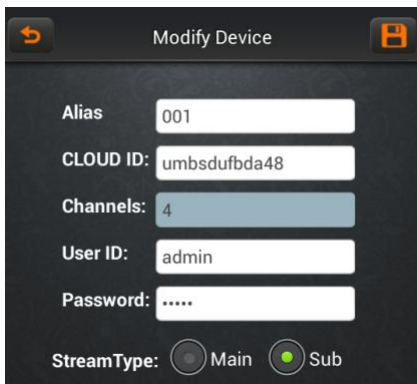
Icon instruction:

Icon	Function instruction
	return to the main menu
	click on the pop-up menu, such as modifying parameters, name options
	shot
	catalogue
	device
	after pop-up, add the catalogue,, device and shot menu

	search the local shot
--	-----------------------


6.1.5.1 Modify the connection parameter


Click on the icon , select "modify connect parameter", then into "modify device" dialog box:



The "Modify Device" dialog box contains the following fields and controls:

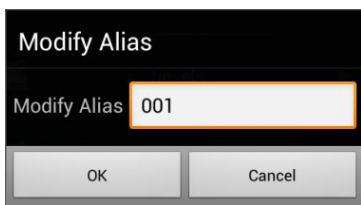
- Alias:** Text input field with value "001".
- CLOUD ID:** Text input field with value "umbsdufbda48".
- Channels:** Text input field with value "4".
- User ID:** Text input field with value "admin".
- Password:** Password input field with masked characters ".....".
- StreamType:** Radio button group with "Main" (selected) and "Sub" options.

A) Click on the icon , return to the device management lists.

B) Click on the icon , save the current configuration.

6.1.5.2 Modify the name

Click on the icon , select the option "modify Alias", then pops up "modify Alias" dialog box.



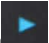
The "Modify Alias" dialog box contains the following fields and controls:

- Modify Alias:** Text input field with value "001".
- Buttons:** "OK" and "Cancel" buttons at the bottom.


A) Click "OK" button to save the current configuration.

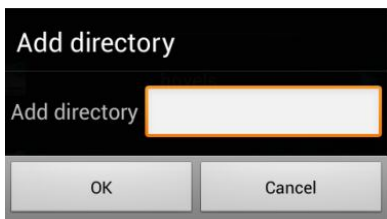
B) Click "cancel" button to cancel the modifying.

6.1.5.3 Delete

Click on icon , select "delete" button to delete the current device directly

6.1.5.4 Add directory

Click on icon  , select "add directory" option, then pops up "add directory" dialog box




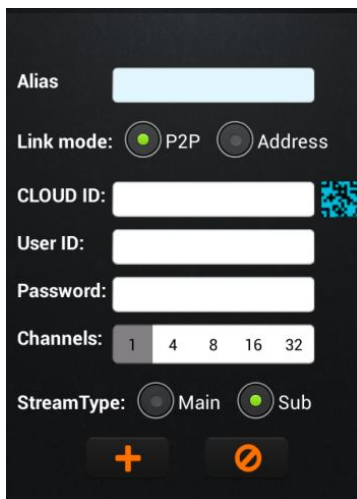
The dialog box has a title bar "Add directory". Below the title bar is a label "Add directory" followed by a text input field. At the bottom are two buttons: "OK" and "Cancel".

A) Click "OK" button, it will be saved the current configuration. Then will be showed in the device management list.




B) Click button "Cancel" to cancel to add the catalogue.

6.1.5.5 Add device


Click on the icon to select "add device" option. 





The form has a title bar. Below the title bar are the following fields and controls:

- Alias:
- Link mode: ☒ P2P ☐ Address
- CLOUD ID: 
- User ID:
- Password:
- Channels: ☐ 1 ☐ 4 ☐ 8 ☐ 16 ☐ 32
- StreamType: ☐ Main ☒ Sub
- Bottom buttons:  

Icon instruction

Icon	Function instruction
	Open the camera and shoot the QR code to obtain the data.

	Save the device data
	Cancel to add the device.

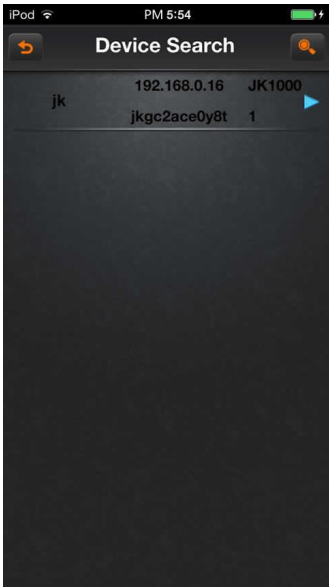
6.1.5.6 Add camera

Please see the operation introduction of “add device”.




6.1.5.7 Search the local device


Click on the icon to enter “search” dialog box. If there are some devices in local place, you would search out the

corresponding device.



Icon instruction

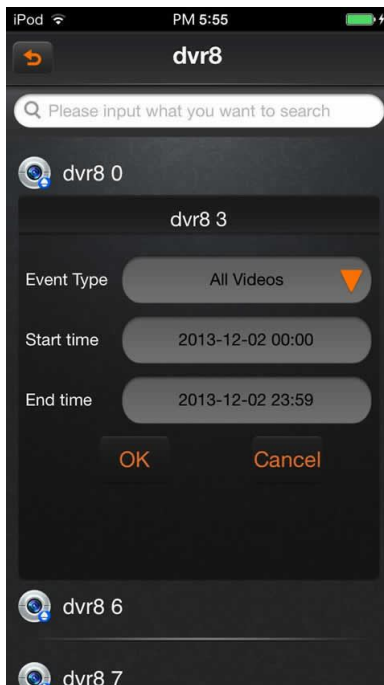
Icon	Function instruction
	return to device management
	pop up the option of “add menu”
	search the device again


Click on the icon , then pop up the menu as follows:

- A) Add a device: add DVR (multi- channel)
- B) Add a shot: add a single camera (single channel)
- C) Modify the name: modify the name of the device or shot
- D) Modify IP: Modify the IP address, subnet mask, gateway information
- E) Modify the device password

6.1.6 Server Video

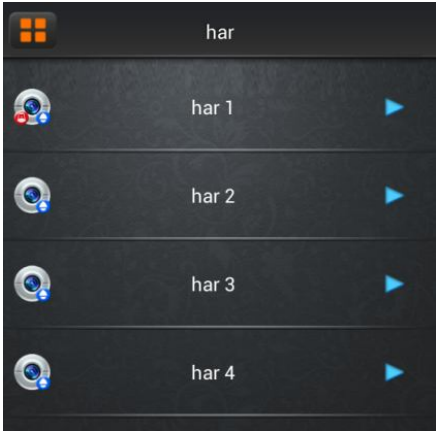
Click button "Server Video" option in the main menu, and then select to playback the video.



After select an event type, start time and end time, clicking on the icon  will list out the remote video lists, and then click on the item will be selected to play or download videos.

6.1.7 Alarming option

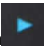
Click the option of "alarming option" in the main menu

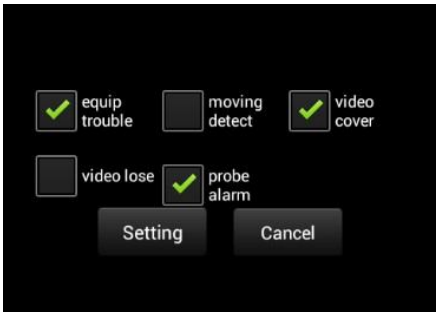


Icon instruction:

Icon	Function instruction
	No guard
	Guarded
	Click the pop-up menu options

6.1.7.1 Alarming

Click on the icon  to select “Alarming” option, pop up the dialog box as follows:



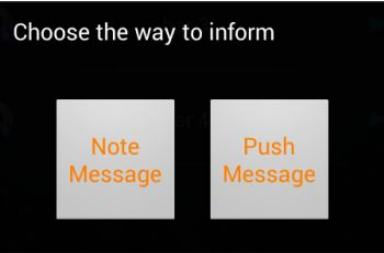
Select the option those need to alarm and click the button “setup” to save the current settings; Click the button “cancel” to cancel the current settings.

6.1.7.2 DisAlarming

Click on the icon  to select the button "DisAlarming", cancel the current camera setting.

6.1.7.3 Notify

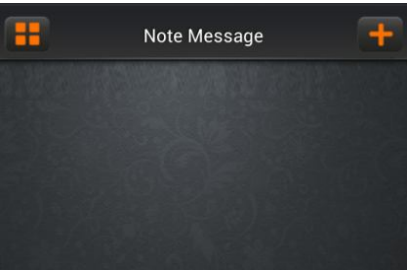
Click on the icon to select "notify" option , and then pop up the dialog as follows:






A) Note Message: set the cell phone number of alarm notification

B) Push Message: open/ close the news push setting

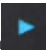
In the notification interface, and then into "SMS notification" interface

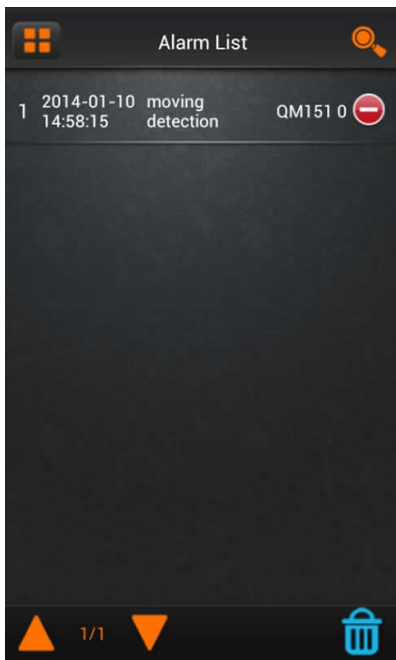


Icon instruction





Icon	Function instruction
	return to the alarm management
	Add the number of SMS
	Delete the current number

6.1.7.4 Record

Click on the icon to select "record" option , and then pop up the dialog of "alarm record"

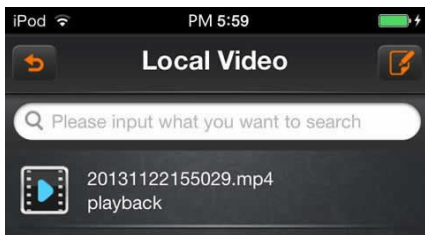



The icons instruction

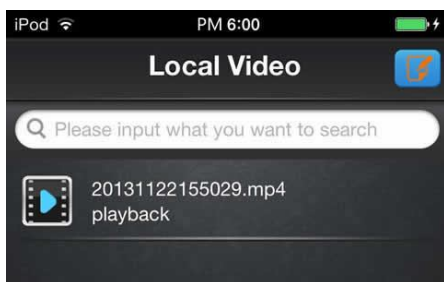
Icon	Function instruction
	return to the alarm management
	search the alarm record
	page up
	page down


6.1.8 Local video

Click on "local video" option in the main menu, and then into the interface as follows



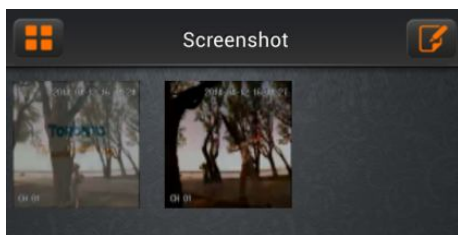
Click on the icon , the local playback video list change to editing states.




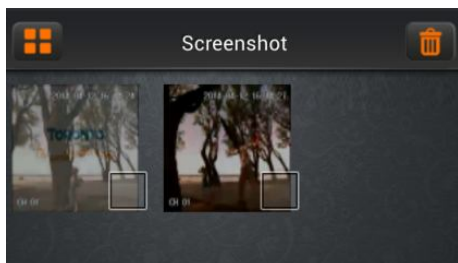
Select the video options that you want to delete, and then click the icon ; you can delete the selected local video.


6.1.9 Screenshot

Click on "Screenshot" option



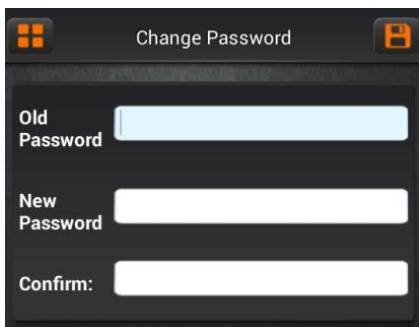
Click on the icon , the local playback video list change to editing states.




Select the image options that you want to delete , and then click on the icon to delete the selected local images.

6.1.10 Change password

Click on "change password" option in the main menu, and then into the interface as follows:

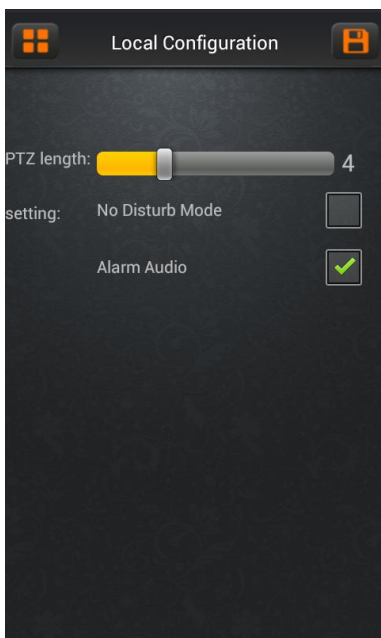


The 'Change Password' interface features a dark background with a title bar at the top containing a menu icon on the left and a save icon on the right. Below the title bar, there are three input fields: 'Old Password' (with a light blue placeholder), 'New Password' (with a white placeholder), and 'Confirm:' (with a white placeholder).

Click on the icon to save the current modified password .

6.1.11 Local configuration


Click on “local configuration” option in the main menu, and then into the interface as follows



The 'Local Configuration' interface has a dark background and a title bar with a menu icon and a save icon. It displays three settings: 'PTZ length' with a slider set to 4, 'No Disturb Mode' with an unchecked checkbox, and 'Alarm Audio' with a checked checkbox (indicated by a green checkmark).

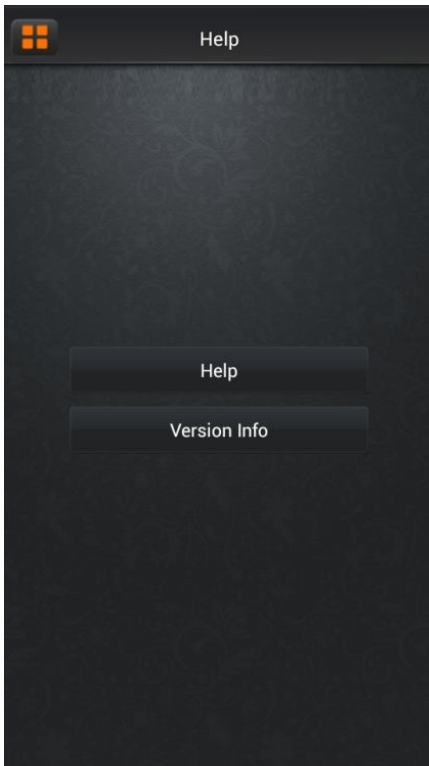
Function instruction:

Function	Instruction
PTZ length	The camera rotation rate setting
Do not disturb	Alarm Info Tips switch
Alarm voice	Close the alarm voice

Click on the icon to save the current configuration. 

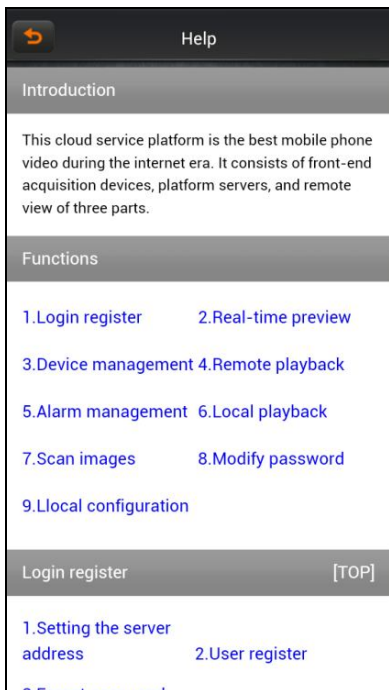
6.1.12 Help

Click on “help” option in the main menu, and then into the interface as follows



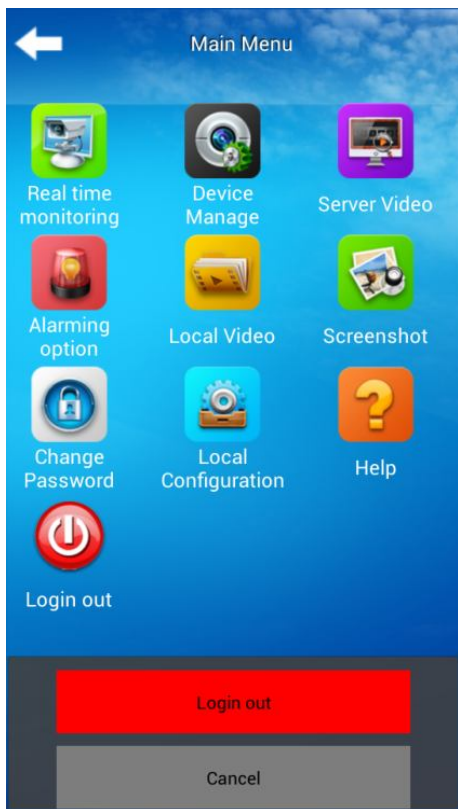
6.1.12.1 Help

Click on the button “ Help” , and then into the interface as follows



6.1.13 Login out

Click on “login out” option in the main menu, and then into the interface as follows



Function instruction:

Function	Instruction
Login out	Log off the current user
Cancel	Cancel log off the current user

6.2 Instructions of iPhone

6.2.1 Essential condition

1) Support the version ios5.0 to ios7.0 of iPhone system.

2) Support DVR platform versions:

Hisilicon v2.0.0.81 and higher.

6.2.2 Installation and operation instructions

Installation

1. Install online

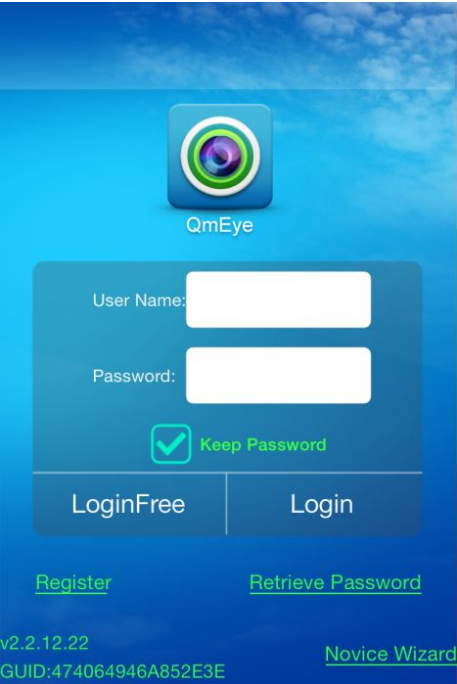
Run the App Store program of iPhone.

Switch to the search tag page, and input QMEYE in the search box to find the application installation package, then click <install> .After finishing installation, there will be QMEYE program icon on the mobile phone desktop.

6.2.3 Login register

6.2.3.1 Login interface

Open the software into the login interface, inputting the username and password and click button “login”, then it will be login the application.

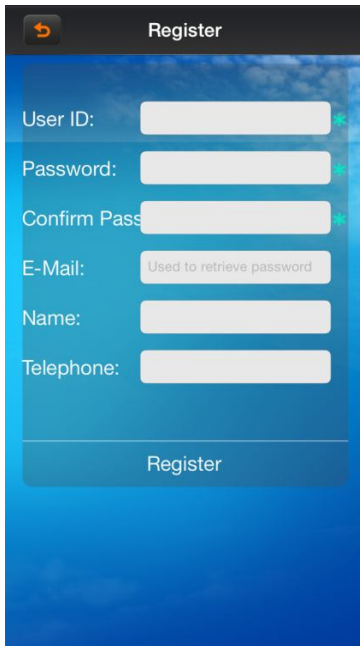


Icon description:

icon	Function description
	After select, it will go directly to the main menu when you log in again.

6.2.3.2 User register

Click the button “register” on the login menu, then will jump to the register interface.

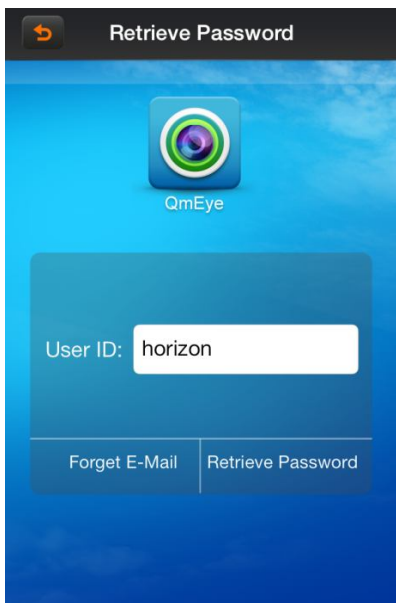
A screenshot of a mobile application's 'Register' screen. The screen has a dark blue header with a back arrow icon and the title 'Register'. Below the header, there are six input fields: 'User ID:', 'Password:', 'Confirm Pass:', 'E-Mail:', 'Name:', and 'Telephone:'. The 'E-Mail' field has a placeholder text 'Used to retrieve password'. To the right of each input field is a green checkmark icon. At the bottom of the form is a large blue button labeled 'Register'.

Enter the register information, click “register” then will be registered.

Note: please enter the valid E-mail address in order to retrieve your password when you lost it.

6.2.3.3 Retrieve the password

On the register clicking the button “Retrieve password” and jump to “Retrieve password” interface.

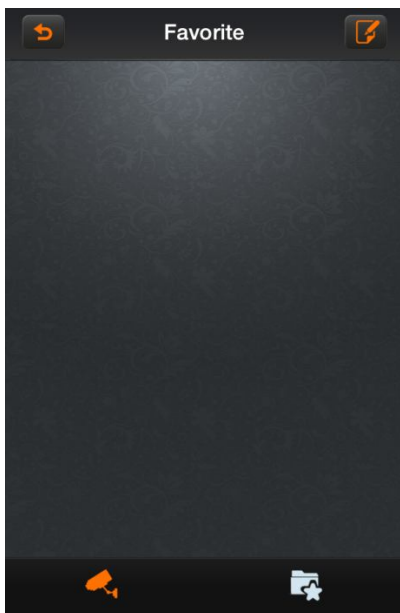


Input the username, click button "retrieve password".

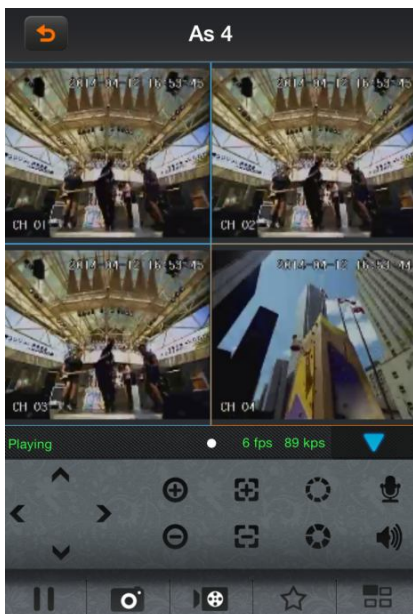
If you have entered your name and email address when registering and the username has been occupied, then "retrieve password" information will be sent to the email address.

6.2.4 Live view





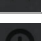
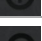









In the main menu, clicking "Live view", Click "Favorites" button, go to "collection management" interface



Select one of the devices on "Live list" enters the video preview interface.

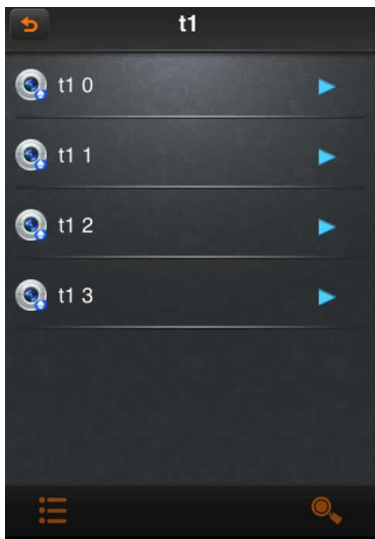


Button instruction:


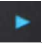

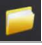



icons	function instruction
	return to main menu
	move to the left
	move to the right
	move down
	move up
	enlarge
	narrow
	zoom out
	zoom in
	aperture enlarge
	aperture narrow
	start/ close intercom
	start/ close speakers
	stop/ start
	snapshot
	start / close the local video
	favorites
	channel switcher

6.2.5 Device manage

Click the button" device manage" on the main menu and enter "device manage" interface.





Icon instruction:

Icon	Function instruction
	return to the main menu
	click on the pop-up menu, such as modifying parameters, name options
	shot
	catalogue
	device
	after pop-up, add the catalogue,, device and shot menu
	search the local shot

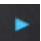
6.2.5.1 Editing server connection parameter

Click on the icon , select "Editing server connection parameter", then into "modify device" dialog box:

A) Click on the icon , return to the device management lists.

B) Click on the icon , save the current configuration.

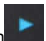
6.2.5.2 Modify Device Name

Click on the icon , select the option “Modify Device Name”, then pops up “Modify Device Name” dialog box.


A) Click “OK” button to save the current configuration.

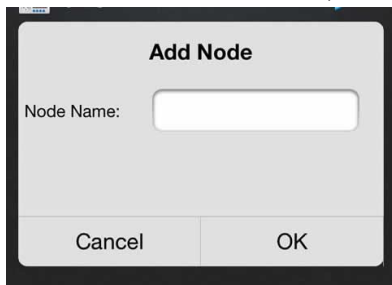
B) Click “cancel” button to cancel the modifying.

6.2.5.3 Delete

Click on icon , select “delete” button to delete the current device directly

6.2.5.4 Add Node


Click on icon , select "add the Node" option, then pops up "add Node" dialog box

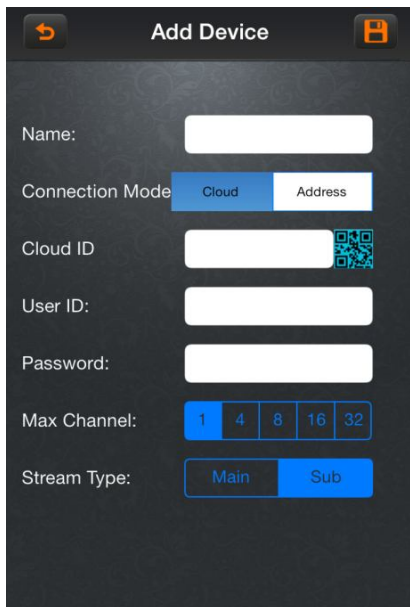
A dialog box titled "Add Node" with a light gray background. It contains a label "Node Name:" followed by a white text input field. At the bottom, there are two buttons: "Cancel" on the left and "OK" on the right.

A) Click "OK" button, it will be saved the current configuration. Then will be showed in the device management list.

B) Click button "Cancel" to cancel to add the catalogue.




6.2.5.5 Add device

Click on the icon  to select "add device" option.

A form titled "Add Device" with a dark background. It features several input fields and selection options: "Name:" with a white text input field; "Connection Mode" with two tabs, "Cloud" (selected) and "Address"; "Cloud ID" with a white text input field and a QR code icon to its right; "User ID:" with a white text input field; "Password:" with a white text input field; "Max Channel:" with five buttons labeled "1", "4", "8", "16", and "32", where "1" is selected; and "Stream Type:" with two buttons labeled "Main" and "Sub", where "Main" is selected.

Icon instruction

Icon	Function instruction
------	----------------------

	Open the camera and shoot the QR code to obtain the data.
	Save the device data
	Return the main menu

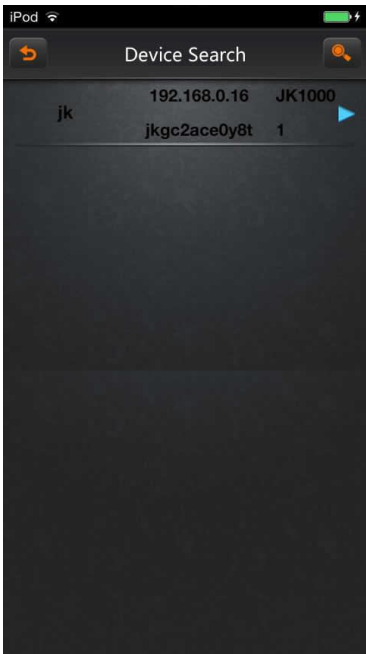
6.2.5.6 Add Camera

Please see the operation introduction of “add device”.



6.2.5.7 Search the local device


Click on the icon to enter “Device search” dialog box. If there are some devices in local place, you would search out


the corresponding device.



Icon instruction

Icon	Function instruction
	return to device management
	pop up the option of “add menu”

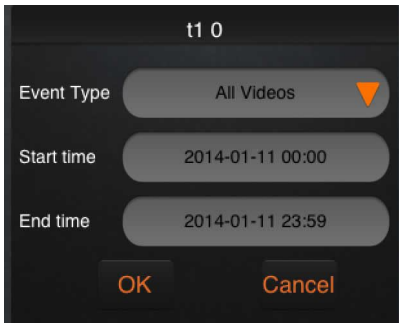
	search the device again
--	-------------------------

Click on the icon , then pop up the menu as follows:

- A) Add a device: add DVR (multi- channel)
- B) Add a shot: add a single camera (single channel)
- C) Modify the name: modify the name of the device or shot
- D) Modify IP: Modify the IP address, subnet mask, gateway information
- E) Modify the device password

6.2.6 Remote Video

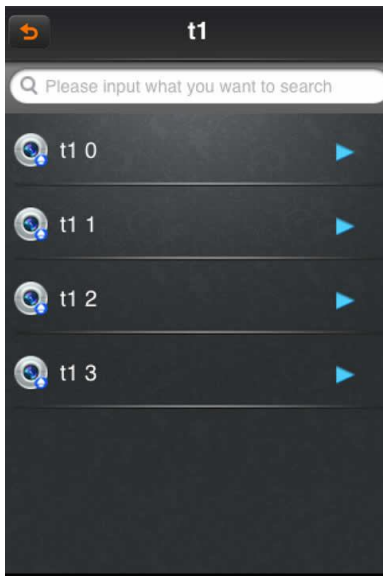
Click button "Remote Video" option in the main menu, and then select to playback the video.






After select an event type, start time and end time, click the button OK will list out the remote video lists, and then click on the item will be selected to play or download videos.

6.2.7 Alert Settings

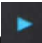
Click the option of "Alert Settings" in the main menu

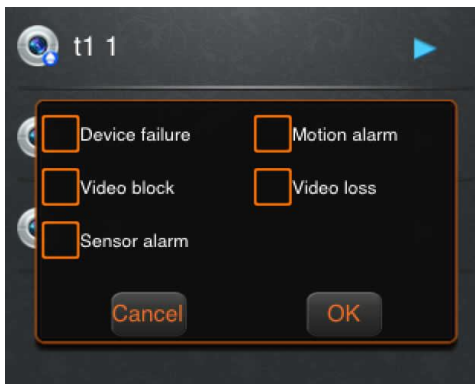


Icon instruction:

Icon	Function instruction
	No guard
	Guarded
	Click the pop-up menu options

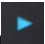
6.2.7.1 Arming

Click on the icon  to select "Arming" option, pop up the dialog box as follows:

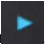


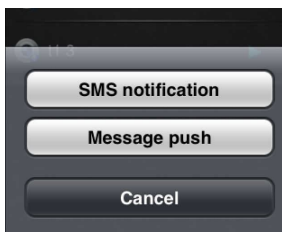
Select the option those need to alarm and click the button “OK” to save the current settings; Click the button “Cancel” to cancel the current settings.

6.2.7.2 Disarming

Click on the icon  to select the button “Disarming”, cancel the current camera setting.

6.2.7.3 Alarm Notification

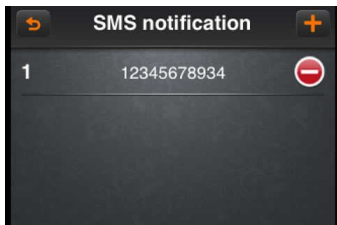
Click on the icon to select “Alarm Notification” option , and then pop up the dialog as follows:






A) SMS notification: set the cell phone number of alarm notification

B) Message push: open/ close the news push setting

In the notification interface, and then into “SMS notification” interface

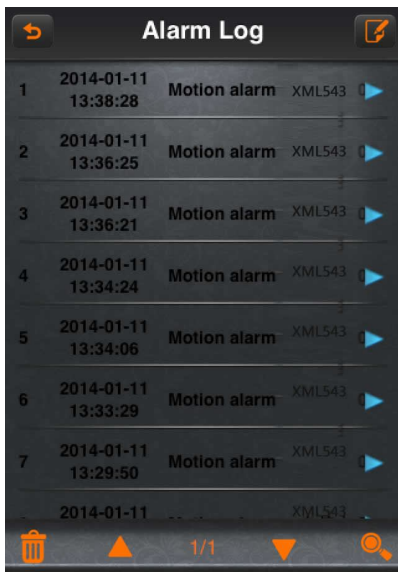


Icon instruction

Icon	Function instruction
	return to the alarm management
	Add the number of SMS
	Delete the current number





6.2.7.4 Alarm Log

Click on the icon  to select "Alarm Log" option, and then pop up the dialog of "Alarm Log"



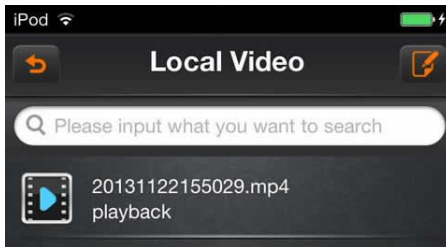
The icons instruction


Icon	Function instruction
------	----------------------

	return to the alarm management
	search the alarm record
	page up
	page down

6.2.8 Local Video

Click on “Local Video” option in the main menu, and then into the interface as follows



Click on the icon , the local playback video list change to editing states.




Select the video options that you want to delete, and then click the button "delete"; you can delete the selected local video.

6.2.9 Photos

Click on “Photos” option



Click on the icon , the local playback video list change to editing states.




Select the image options that you want to delete, and then click on the button delete to delete the selected local images.

6.2.10 Modify password

Click on "modify password" option in the main menu, and then into the interface as follows:



Click on the icon  to save the current modified password.


6.2.11 Local config

Click on “local config” option in the main menu, and then into the interface as follows



Function instruction:

Function	Instruction
PTZ length	The camera rotation rate setting
Do not disturb	Alarm Info Tips switch
Alarm voice	Close the alarm voice
Alarm language	Alarm push language

Click on the icon  to save the current configuration.

Chapter Seven FAQ (Frequently Asked Questions)



01: Why the DVR did not run after connect the power supply?

☛ ☐ Please check the power switch turn on or off at the rear panel of DVR.

☛ ☐ Please check if the turn on DVR operation correct or not?

☛ ☐ If you select the adaptor +12V, 5A or above? (8ch 5A, 16ch 220V 200W)



02: Still stop over on the boot-strap frame?

☛ Physical damaged in hard disk drive

☛ Boot manager abnormal.



03: Why does appear the boot running too slow?

☛ ☐ There are too much capacity data in hard disk drive, the system will automatic search the data when the system boot up, caused the boot running slow.

☛ ☐ The hard disk drive error will cause the system research the data repeatedly, caused the boot running slow.



04: Why does the system reboot repeatedly?

☛ ☐ Check the hard disk drive, if there is not the FAT32 formatted in it or the problem in it and caused the DVR reboot;

☛ ☐ Please check the power supply of DVR, if you installed a lot of hard disk drive, it may be reboot repeatedly under power;

☛ ☐ Please pull up the network cable, then to check the DVR can work normally or not, being the catastrophe failure in network, it will cause the DVR reboot repeatedly;



05: Why does the system halted of DVR during the playback and search the video file information in progress?

☛ Please check if you install the hard disk drive or if the drive is ok or not? Please replace the good one for it soon;

☛ If the ambient temperature on the high side or not?

☛ Is there any heaven current installation surrounding and external video device, heavy current surging video cable, caused the DVR can not work properly and the system halted;



06: Firmware upgrade failure?

☛ U drive is not good compatible with the DVR, cause the DVR can not detected it, suggested to try one or two more different kind of U drive in the market;

☛ USB interface is not good;

☛ The voltage hunting fearfulness during the system firmware upgrade in progress;



07: Why the display color is black and white in TV and VGA monitor?

☛ Check the video system is it matching the video input, DVR, TV or VGA monitor, if there is not on all fours, please set the video system mode in auto automatic recognition;



08: Why does nothing display on the TV or VGA monitor?

🔧 ☐ please make sure if the power supply of TV or VGA monitor turn on or not; if the illumination located in the lowest status?

🔧 ☐ if the video connected with TV or VGA monitor properly? Check if there is any video signal input? And make sure the line faulty or not?



09: Why does the video like water wave, to appear obstruction distortion?

🔧 ☐ if there is short circuit, open circuit or insufficient solder and connection failure of video cable?

🔧 ☐ If the video cable obstruction by high voltage interference, please separate the video and high voltage in linkup cabling, at the meantime, please select the better quality, shield video cable for the project;

🔧 ☐ In the whole system, only select the central point to grounding, please do not multi port to grounding, then, cause the common mode obstruction, please connect the screw in DVR rear panel to grounding;

🔧 ☐ Check if there is the become old problem in the camera or TV monitor and cable?



10: Why do the color of live video and record video data distortion?

🔧 ☐ Make sure the input and output video parameter of main menu setting correct;

🔧 ☐ Make sure the connection is correct;



11: Why does the video skew became deformed, color cast?

🔧 ☐ Make sure the VGA cable and DVR be connected with grounding properly;

🔧 ☐ The DVR working atmosphere temperature high, or no good in radiating, cause the VGA chipset working exceptional, or the mention circuit parameter is abnormal;



12: Why does the record video playback in mosaic under local DVR?

🔧 ☐ The recording parameter setting is too low cause the record video quality overall down, sometime appears to mosaic;

🔧 ☐ The record video file locates where there is a bad sector in a hard disk drive, it will cause the mosaic raising;