

# How to connect and setup network??

## Devices



Router



OT / TC DVR



Monitor

Tablet or Smartphone



NB / PC



LAN Cable



## Network Setup



LAN port is at the back of DVR. Please connect RJ45 cable from LAN port to router.

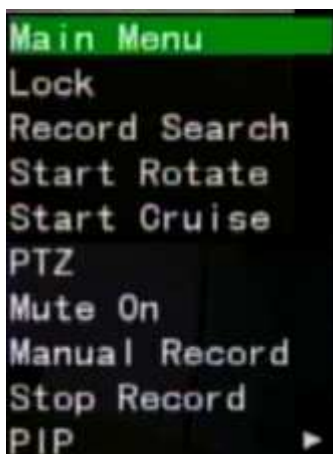
## Connect Monitor to DVR



DVR support 2 display interface below:  
(BNC or VGA)



## Network Settings



Step 1:

Right click USB mouse button to bring OSD menu and click “Main Menu” icon.

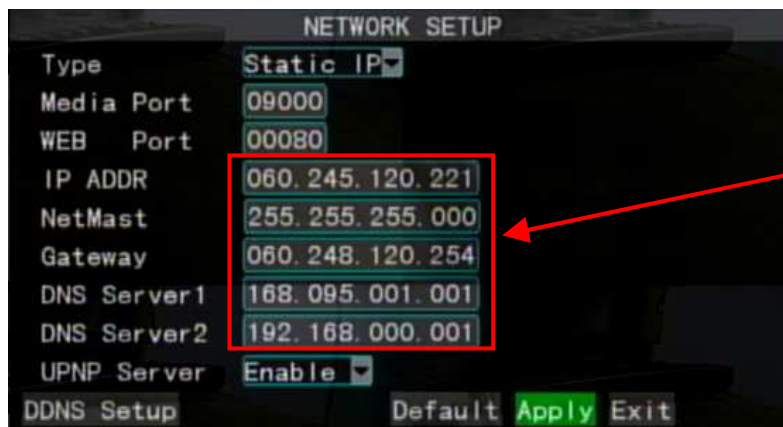


Step 2:  
Select "Network"

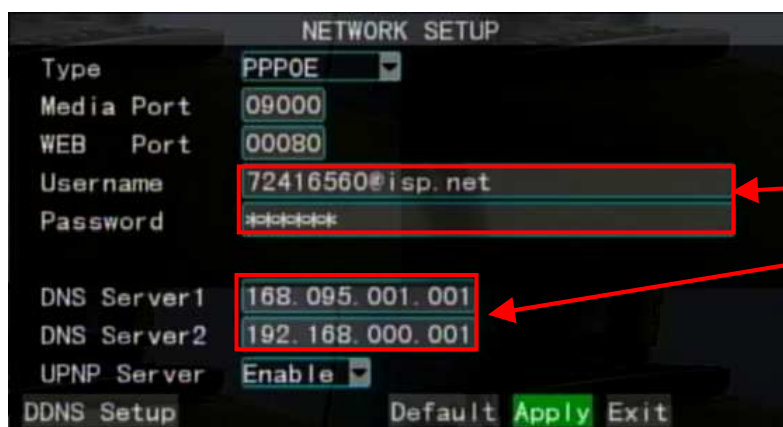


Step 3a:  
Set Network Type.

If your DVR is connect to router, please select "DHCP" and click "Apply".



Step 3b:  
If your network type is Static IP, ISP or network admin will provide you IP address, subnet mask, gateway and DNS info. You can enter the IP address, subnet mask, gateway and DNS info to DVR.

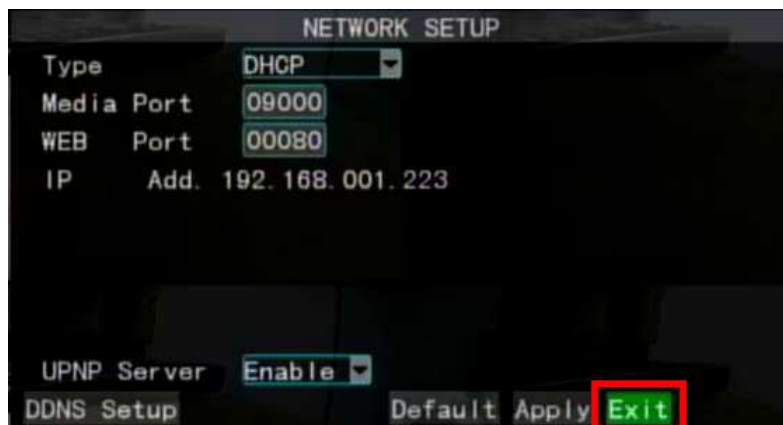


Step 3c:  
If you use PPPoE to connect to internet, please select network type to PPPoE, and enter the username, password and DNS ISP provide you.

After DVR reboot, IP address will show in status when DVR connect to interent



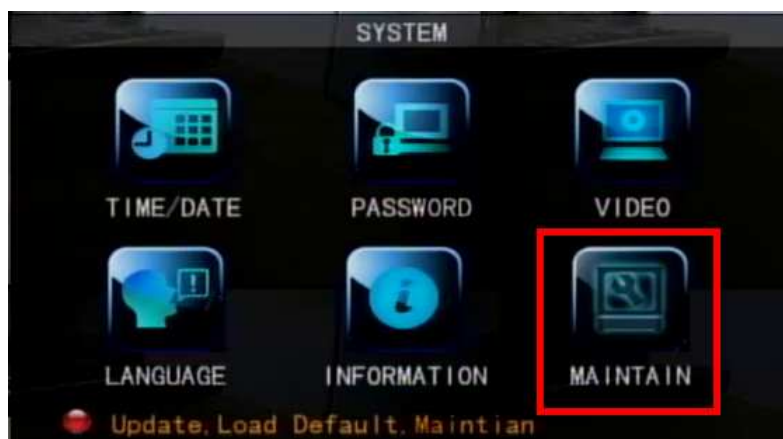
Step 4:  
DVR will show message “Save Finished!”.  
Click “OK” to continue



Step 5:  
Click “Exit”



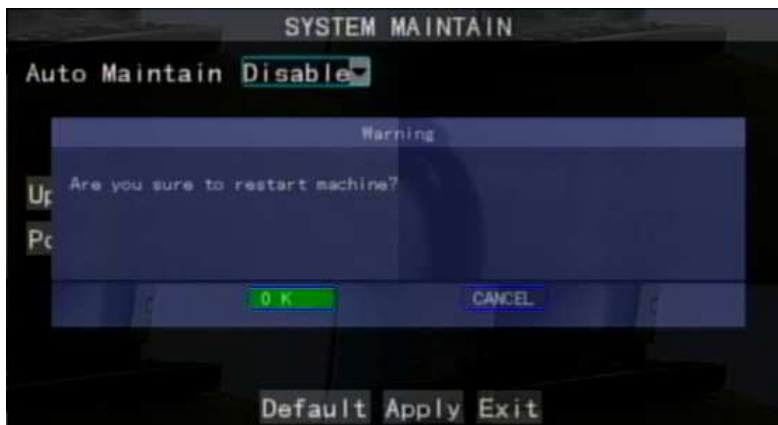
Step 6:  
Click “System”



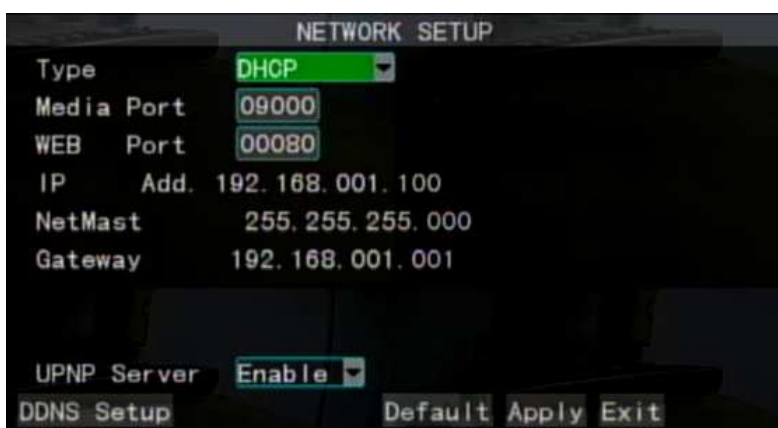
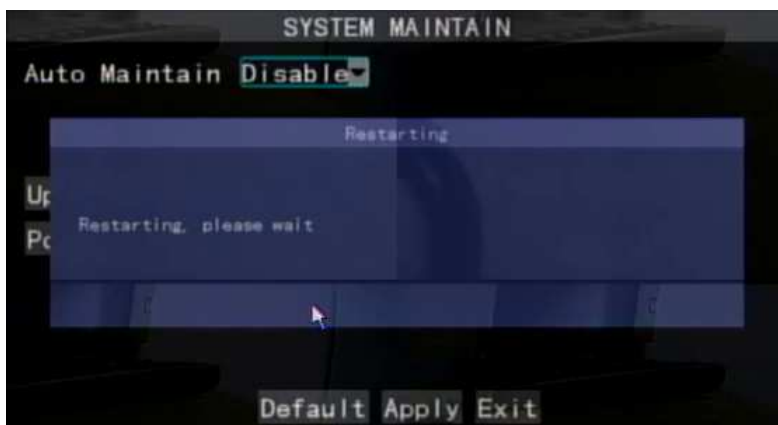
Step 7:  
Click “Maintain”



Step 8:  
Click “Reboot”



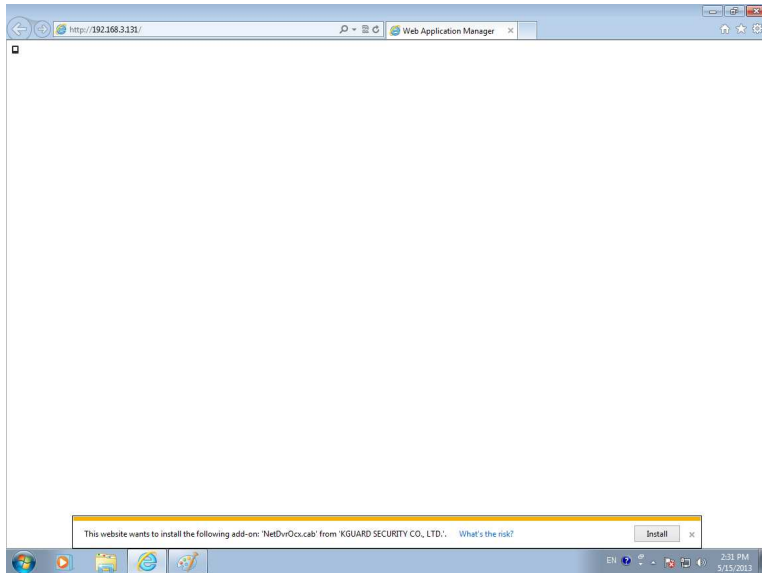
Step 9:  
DVR will display warning message “Are you sure to restart machine?”  
Click “OK” to continue



Step 10:  
After DVR boot, please follow step 1~step2 again, to check the IP address of DVR.

For example: In this picture the DVR have IP address 192.168.001.100

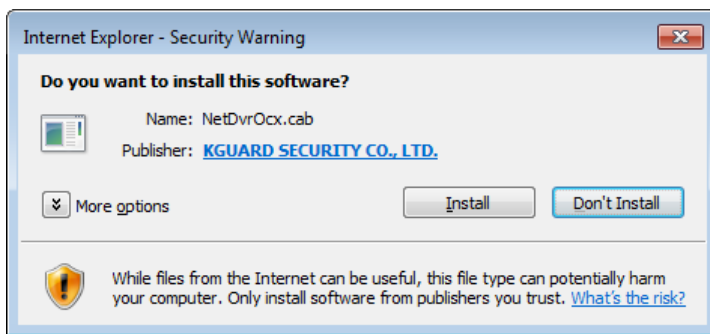
Note: If DVR display IP address 192.168.001.001, when you use PC, smartphone or tablet to connect to DVR, you just input IP address 192.168.1.1, you don't need to enter 192.168.001.001.



### Step 11:

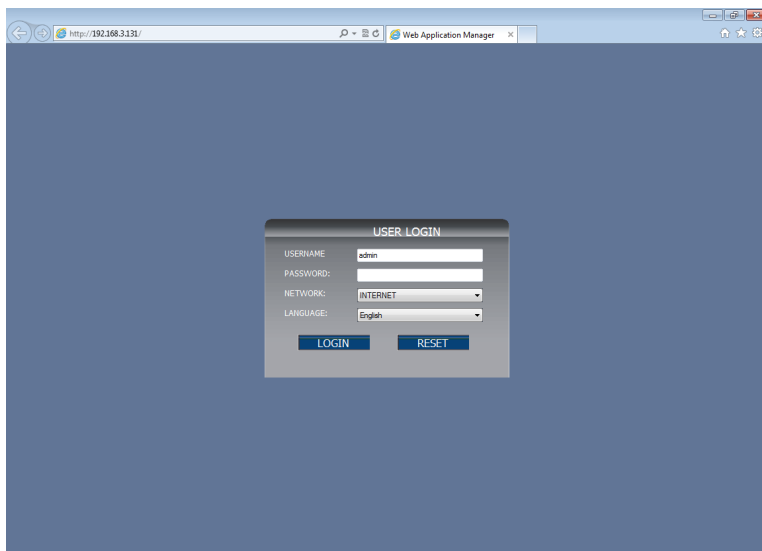
Open you PC's IE browser and enter DVR's IP address to connect.

If this is the first time your PC connects to DVR, it will need to install add-on. Select “Install This Add-on for All Users on This Computer”



### Step 12:

Click “Install” to install add-on



### Step 13:

After install add-on completed, you will see the login page. User your DVR local user/pass to login.





Step 14:

After login successfully, you can see the camera video