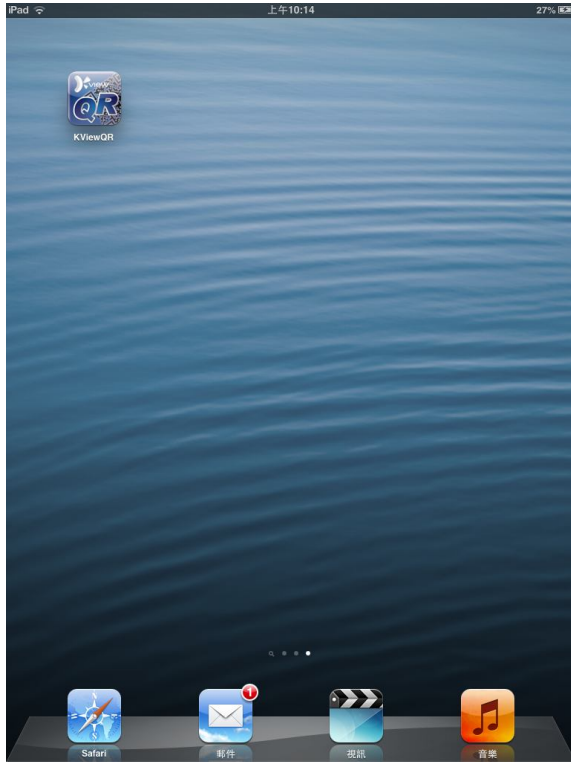


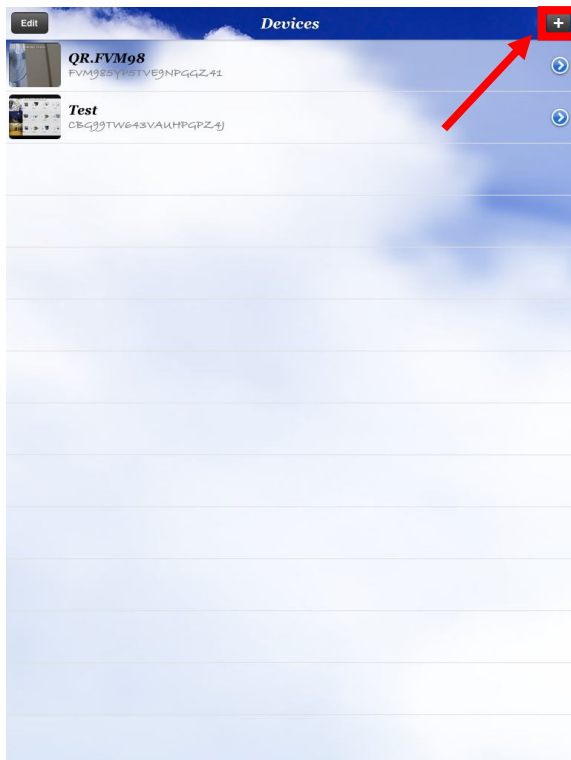
# KViewQR Setting

You can use KViewQR app on your mobile device to view EL DVR camera. It is very easy to connect, you do not need to enter many settings.



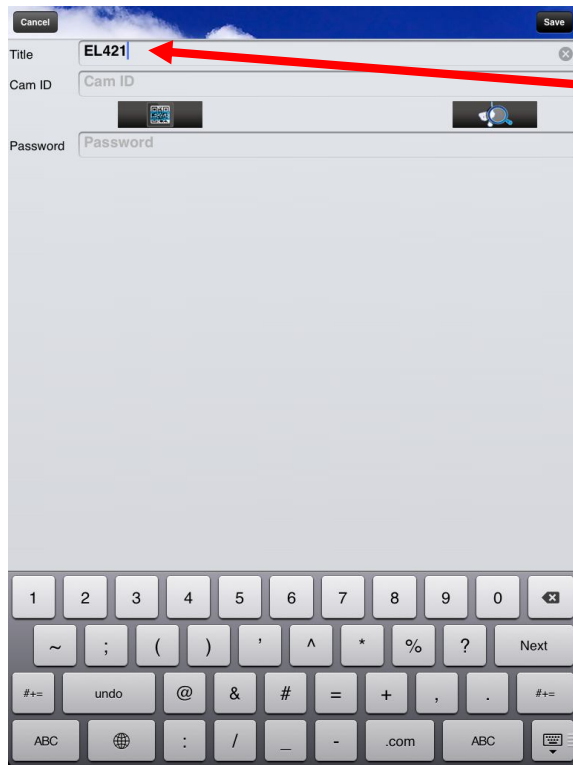
## Step 1

Touch “KViewQR” icon to start KViewQR app



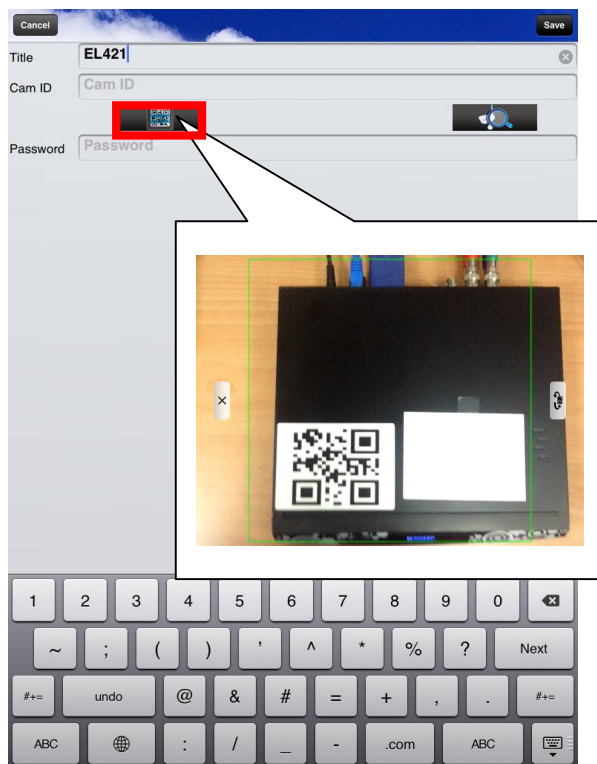
## Step 2

Click “+” button on upper right to add new device.



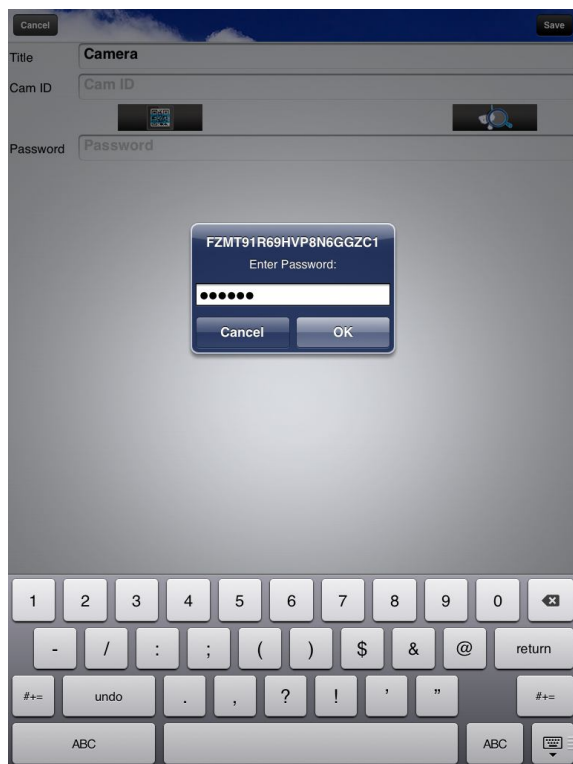
Step 3

Enter any title name, for example: DVR's name



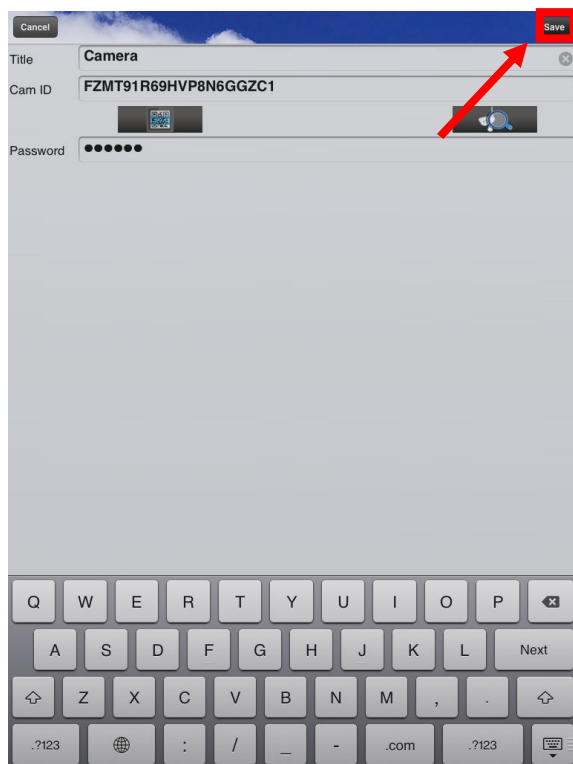
Step 4

You can touch camera icon to take QR code.  
QR code is on DVR's sticker.



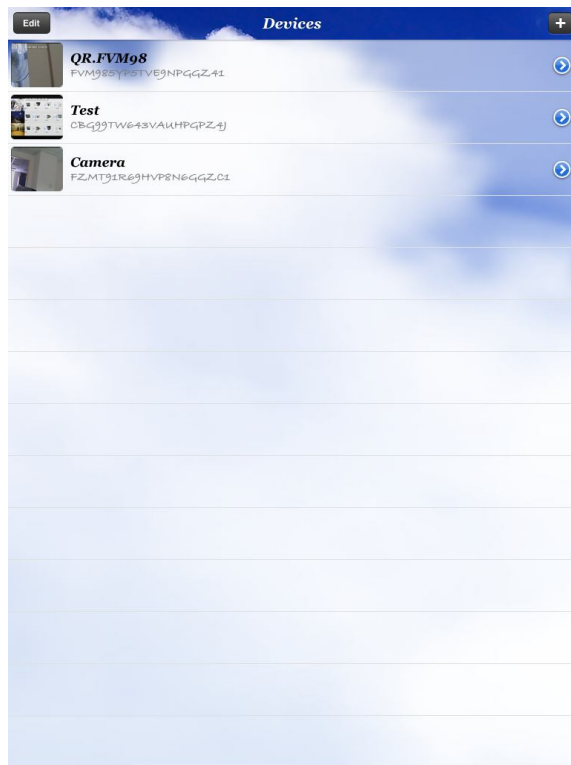
Step 5

Enter DVR's admin account password.



Step 6

Click "Save" button to save setting.



### Step 7

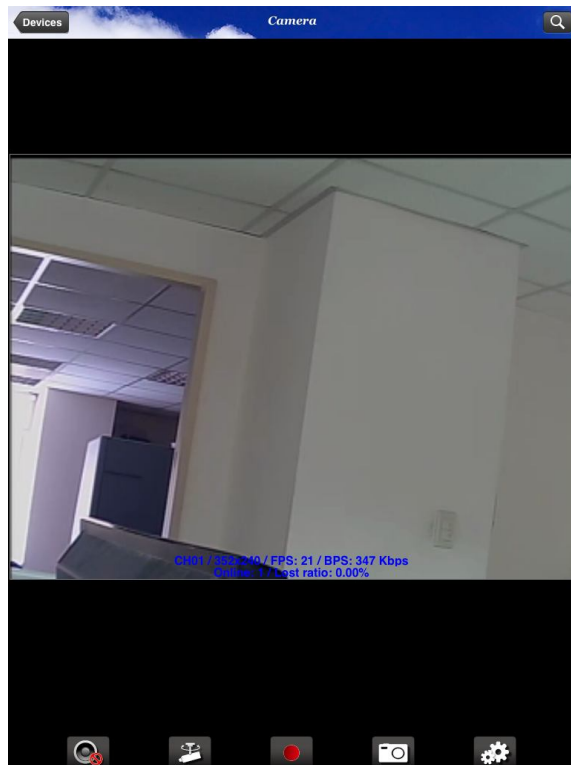
Touch the device in device list to view camera video.

Note: DVR must be connected to internet or KViewQR will not work.



### Step 8

Wait for KViewQR to connect to DVR. The wait time depend on network speed.



## Step 9

Now you can see DVR camera video in KViewQR.