

# How to connect and setup network??

## Devices



Router



NS / BR DVR



Monitor

Tablet or Smartphone



NB / PC



LAN Cable



## Network Setup



LAN port is at the back of DVR. Please connect RJ45 cable from LAN port to router.

## Connect Monitor to DVR



DVR support 2 display interface below:



NS/BR DVR can only have GUI on 1 video output. If you do not see GUI on your monitor, you can use 2 ways to change GUI output switch between BNC and VGA:

1. Press and hold REW button on front panel for 5 seconds, you will hear beep sound when GUI switch.
2. Press number “0” (zero) button on remote control, you will hear beep sound when GUI switch.

## Network Settings



Users have 3 ways to control DVR:

1. Front Panel
2. USB mouse
3. Remote Control

Here we will use USB mouse to control DVR.

Step 1:

Right click USB mouse button to bring OSD menu and click “Main Menu” icon.



Step 2:  
Select "Network"



Step 3a:  
Set Network Type.

If your DVR is connect to router, please select "DHCP" and click "Apply".



Step 3b:  
If your network type is Static IP, ISP or network admin will provide you IP address, subnet mask, gateway and DNS info. You can enter the IP address, subnet mask, gateway and DNS info to DVR.

NETWORK

Network RemoteStream DDNS Email Mobile

Type	PPPoE
Client Port	09000
HTTP Port	00080
User Name	72416564@hinet.net
Password	*****
DNS 1	168.095.001.001
DNS 2	000.000.000.000
UPNP	Disable

Default Apply Exit

Step 3c:

If you use PPPoE to connect to internet, please select network type to PPPoE, and enter the username, password and DNS ISP provide you.

After DVR reboot, IP address will show in status when DVR connect to internet

NETWORK

Network Remote Stream DDNS Email Mobile

Type	DHCP
Client Port	09000
HTTP Port	00080
UPNP	Enable

Default Apply Exit

Save finished!

OK

Step 4:

DVR will show message "Save Finished!". Click "OK" to continue

NETWORK

Network Remote Stream DDNS Email Mobile

Type	DHCP
Client Port	09000
HTTP Port	00080
UPNP	Enable

Default Apply Exit

Step 5:

Click "Exit"



Step 6:  
Click “Advanced”



Step 7:  
Click “Reboot”



Step 8:  
DVR will display warning message “Are you sure to restart machine?”  
Click “OK” to continue

Step 9:  
DVR will display message “Restarting. Please wait”

Please wait 40 secs and DVR will boot automatically.

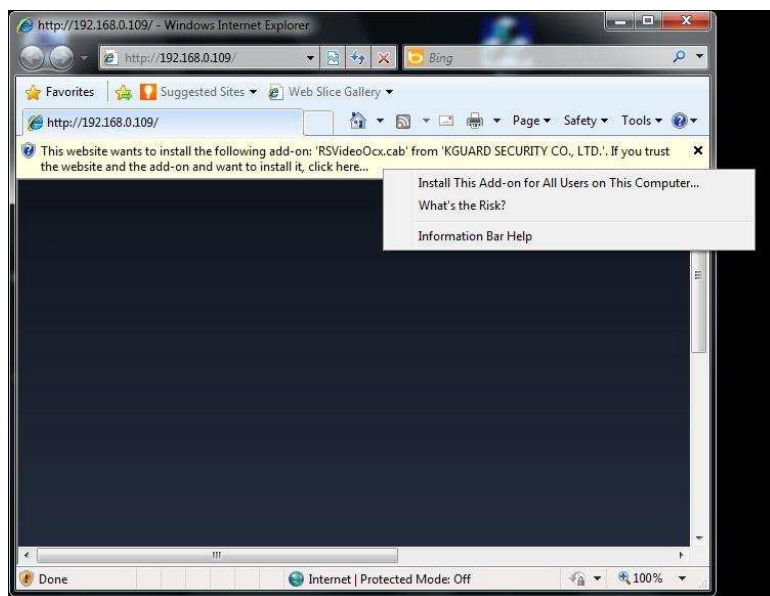


Step 10:

After DVR boot, please follow step 1~step2 again, to check the IP address of DVR.

For example: In this picture the DVR have IP address 192.168.0.109

Note: If DVR display IP address 192.168.001.001, when you use PC, smartphone or tablet to connect to DVR, you just input IP address 192.168.1.1, you don't need to enter 192.168.001.001.



Step 11:

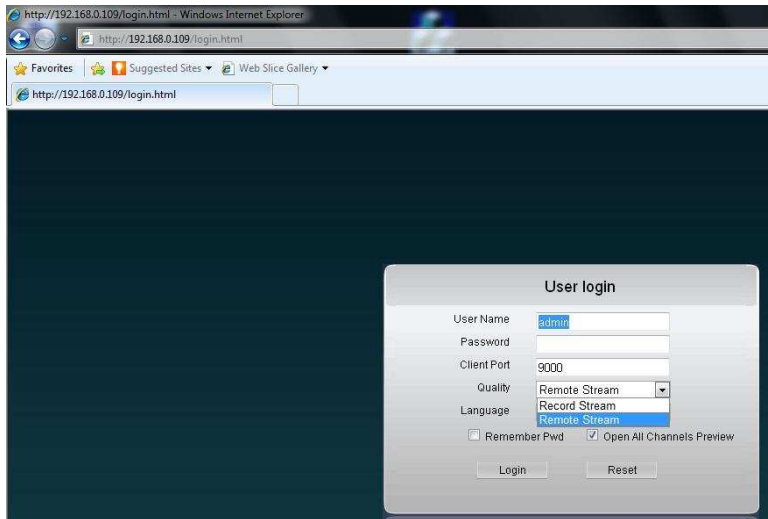
Open you PC's IE browser and enter DVR's IP address to connect.

If this is the first time your PC connects to DVR, it will need to install add-on. Select "Install This Add-on for All Users on This Computer"



Step 12:

Click "Install" to install add-on

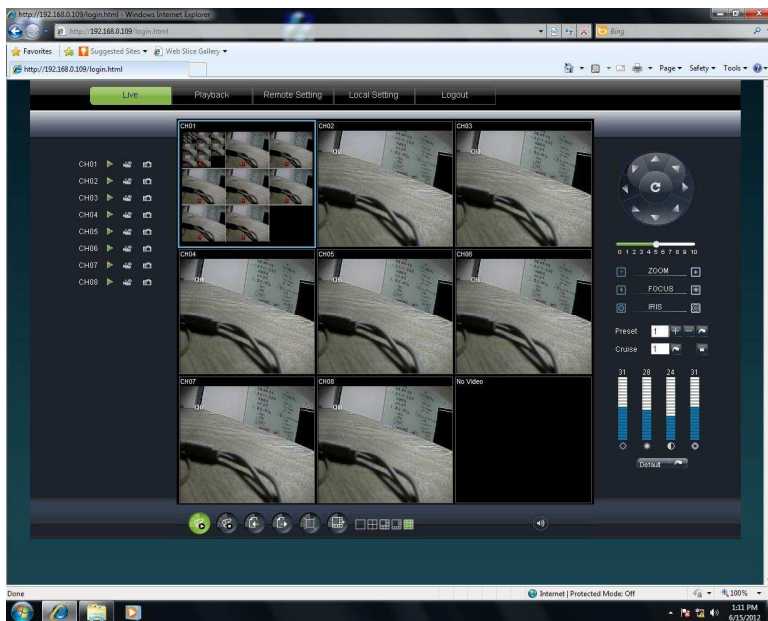


Step 13:

After install add-on completed, you will see the login page. User your DVR local user/pass to login.

Note:

If you have issues with Win7 or IE9, please check “How to use Windows 7 and IE 9 to connect to NS/BR DVR from remote “ and “How to Disable UAC on Win7”



Step 14:

After login successfully, you can see the camera video