

How to setup E-mail notification for Gmail



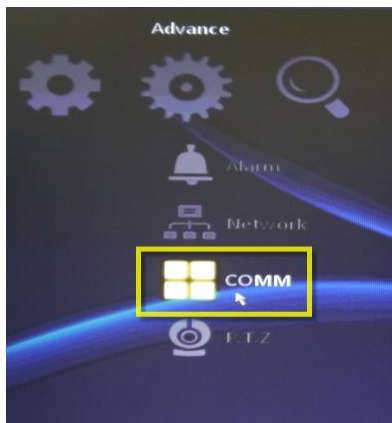
Step 1:

Right click USB mouse button to bring OSD menu and click “Menu” icon.



Step 2:

Go to “Advanced”



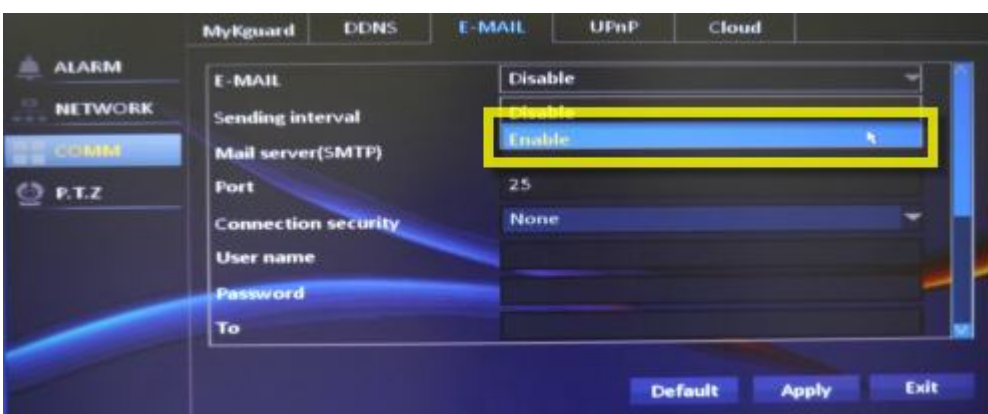
Step 3:

Select “COMM”



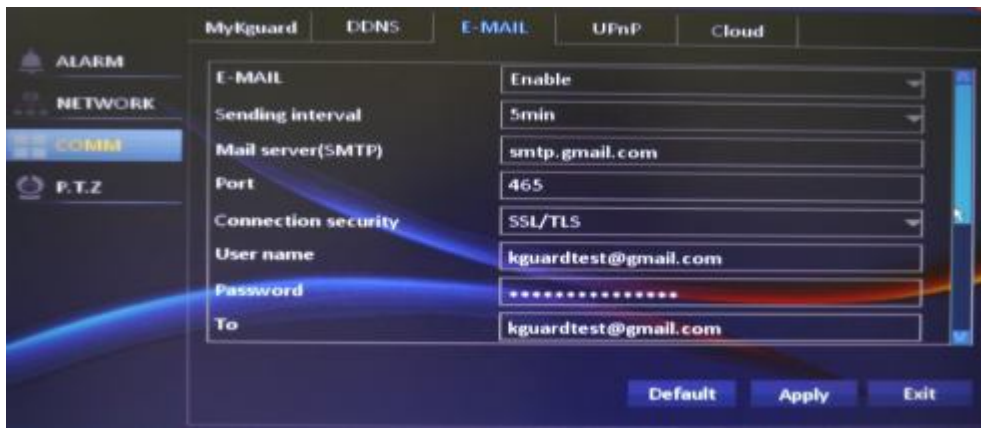
Step 4:

Go to “Email”



Step 5:

Enable Email function



Step 6:

Sending interval: time interval to send email

SMTP server:

smtp.gmail.com

SMTP port: 465

Connection security: SSL

Username: your e-mail address

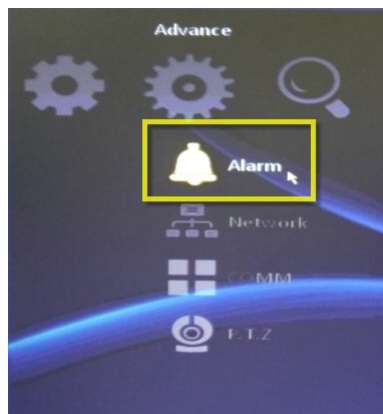
Password: your e-mail address password



Step 7:

Click “Test” button to check email settings. If email setting is correct DVR will display

“Email setting is right, an E-mail has been



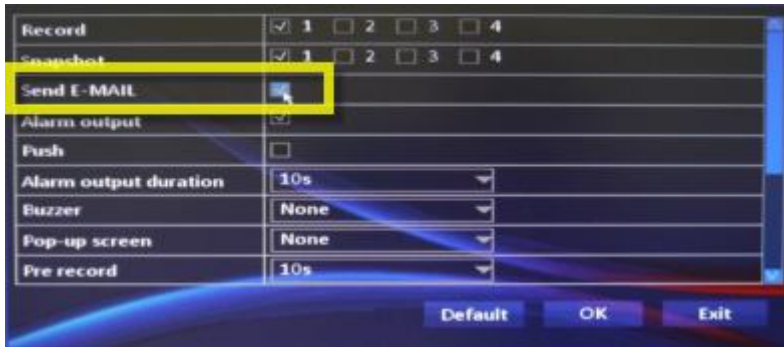
Step 8:

Go to “Alarm”

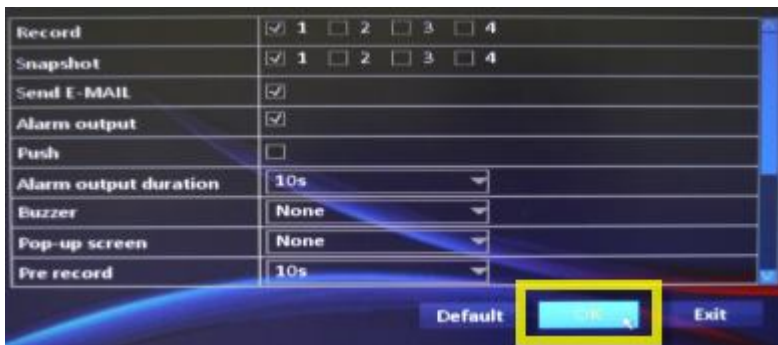


Step 9:

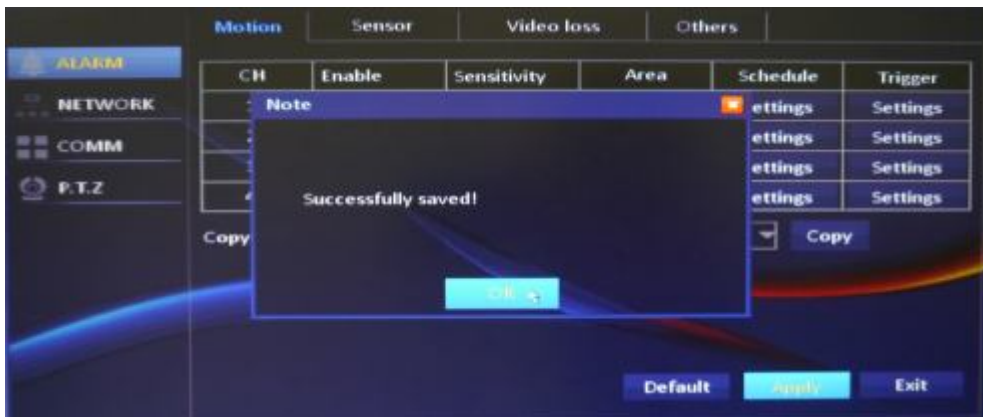
Go to “Settings”



Step 10:
Enable Send E-mail



Step 11:
Click “OK”



Step 12:
DVR will display
“Successfully Saved”

Step 13: You will see motion email in your Gmail account.

