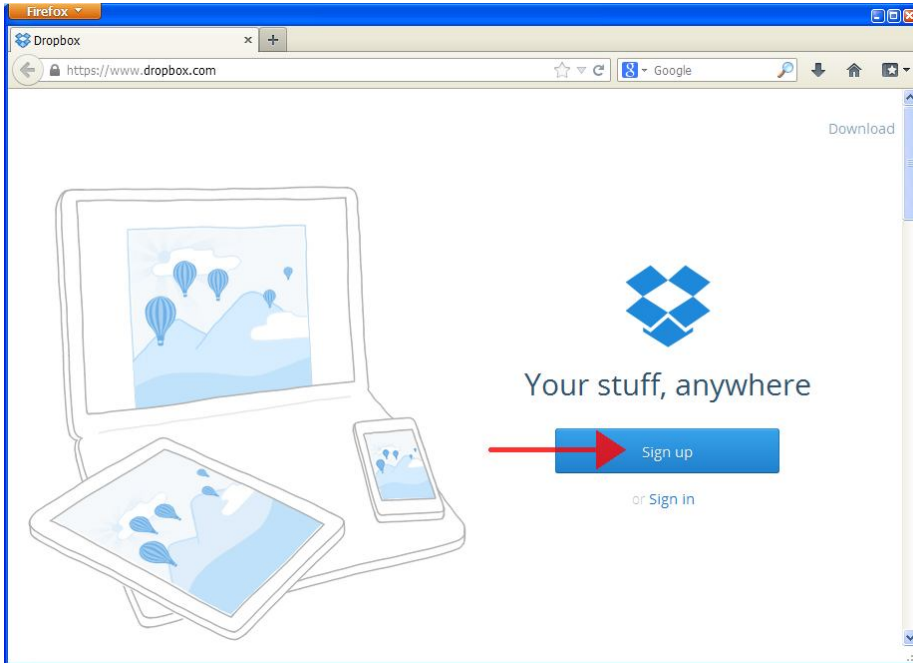


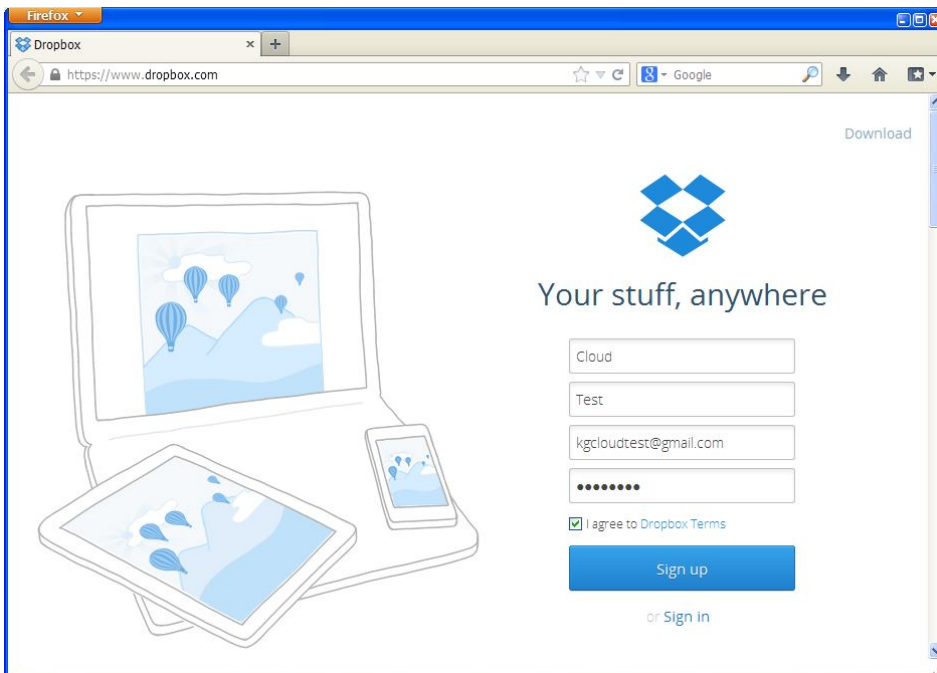
AR DVR Cloud setup

Our new AR series DVR have new function that can upload images to cloud storage. You will need to apply a Dropbox account.

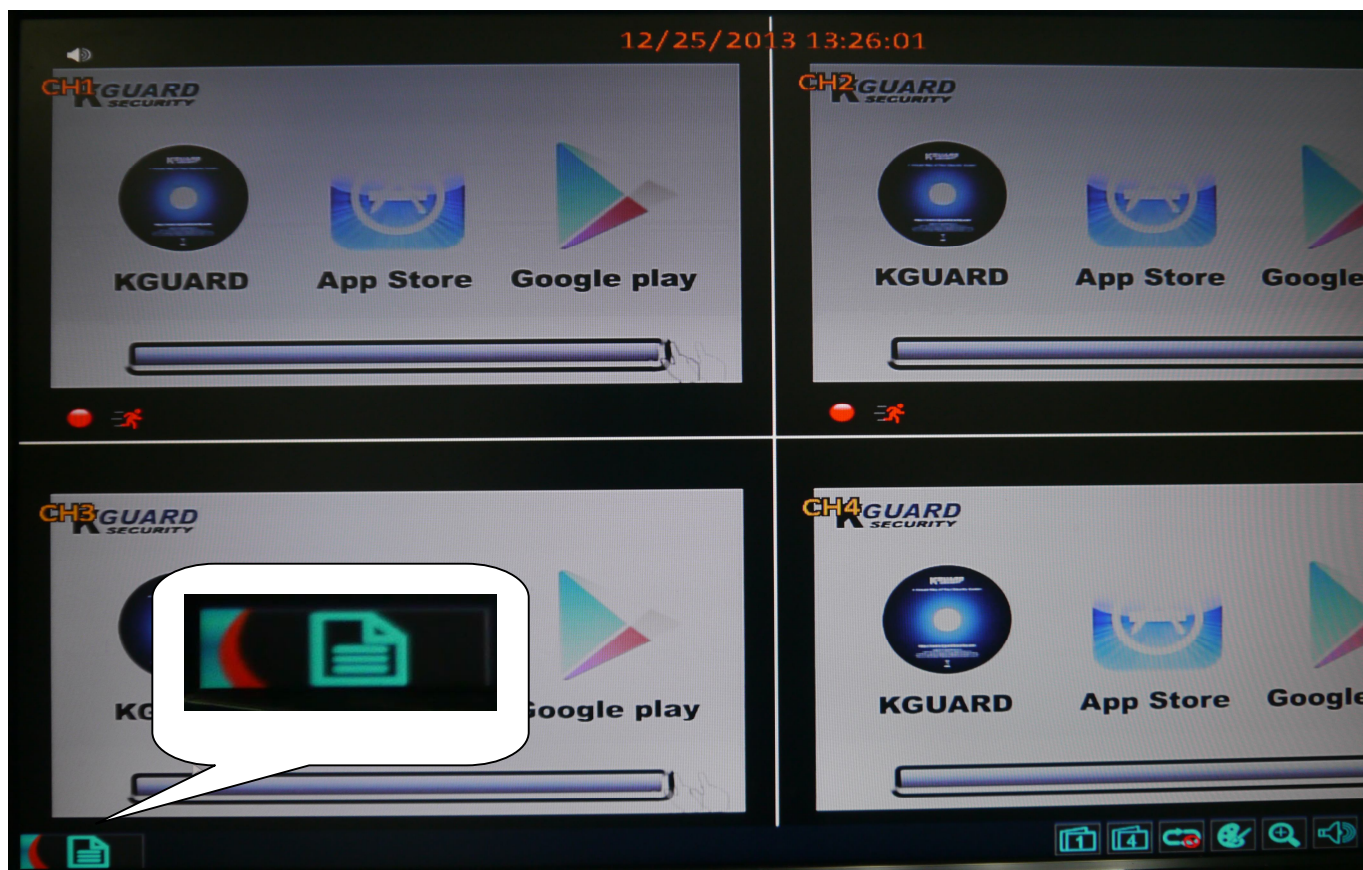
1. Go to Dropbox website and click “**Sign Up**” to apply new Dropbox account.



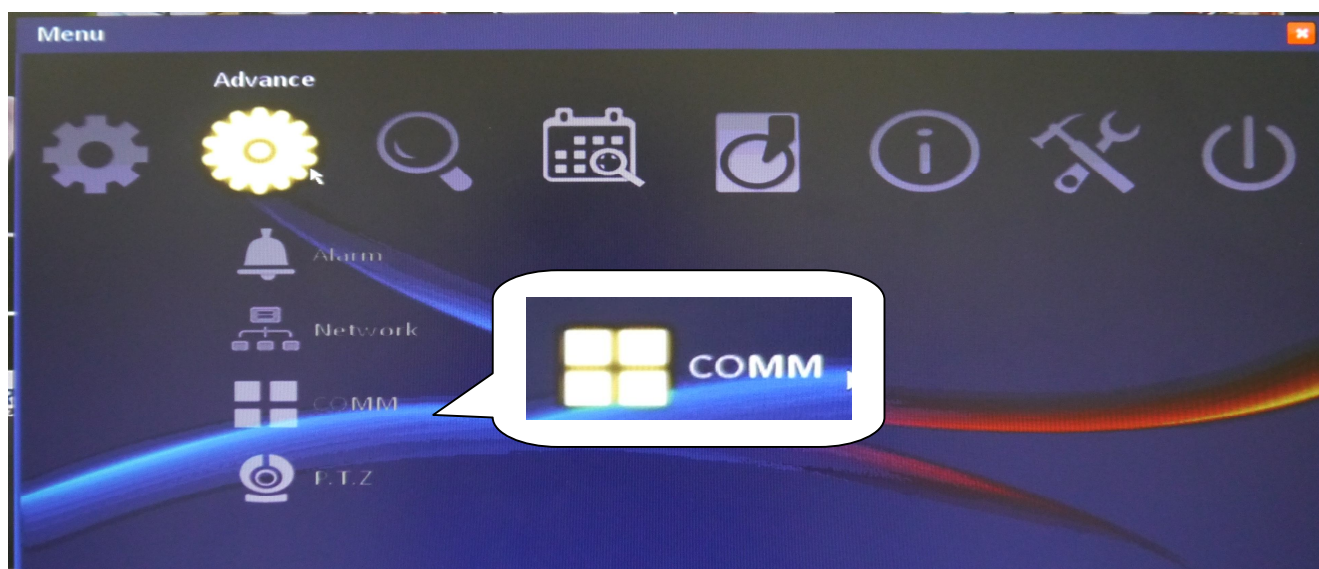
2. Enter your first name, last name, e-mail and password then click “**Sign Up**”.



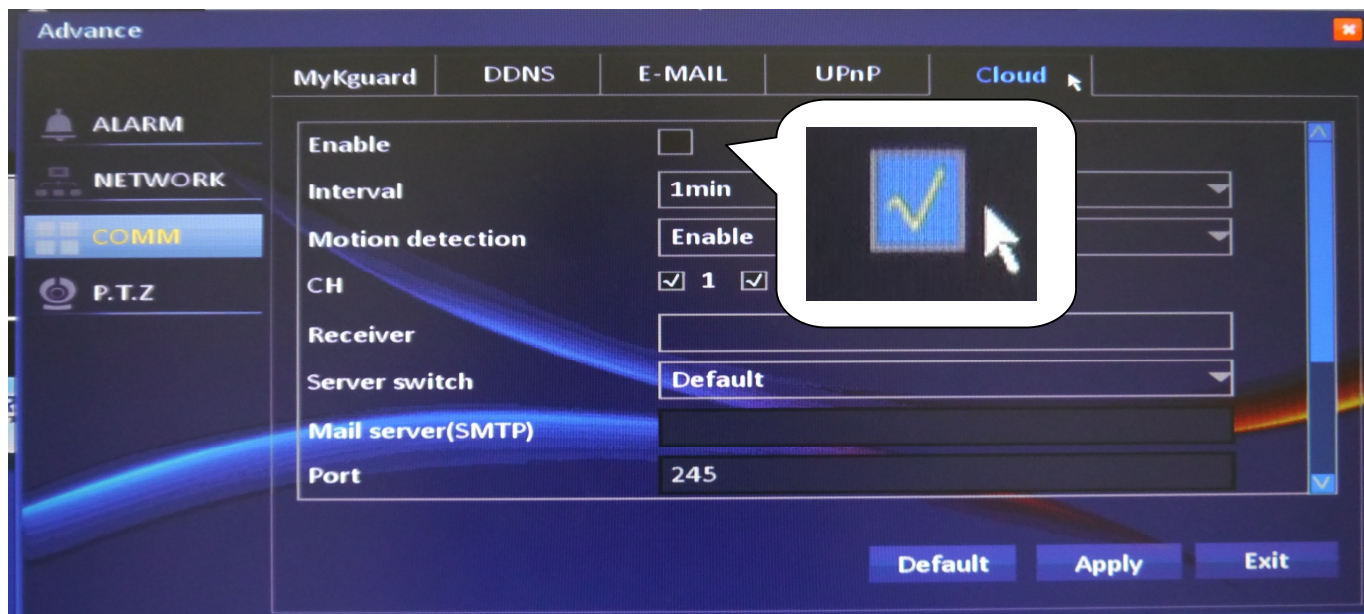
3. Go to DVR's "Menu"



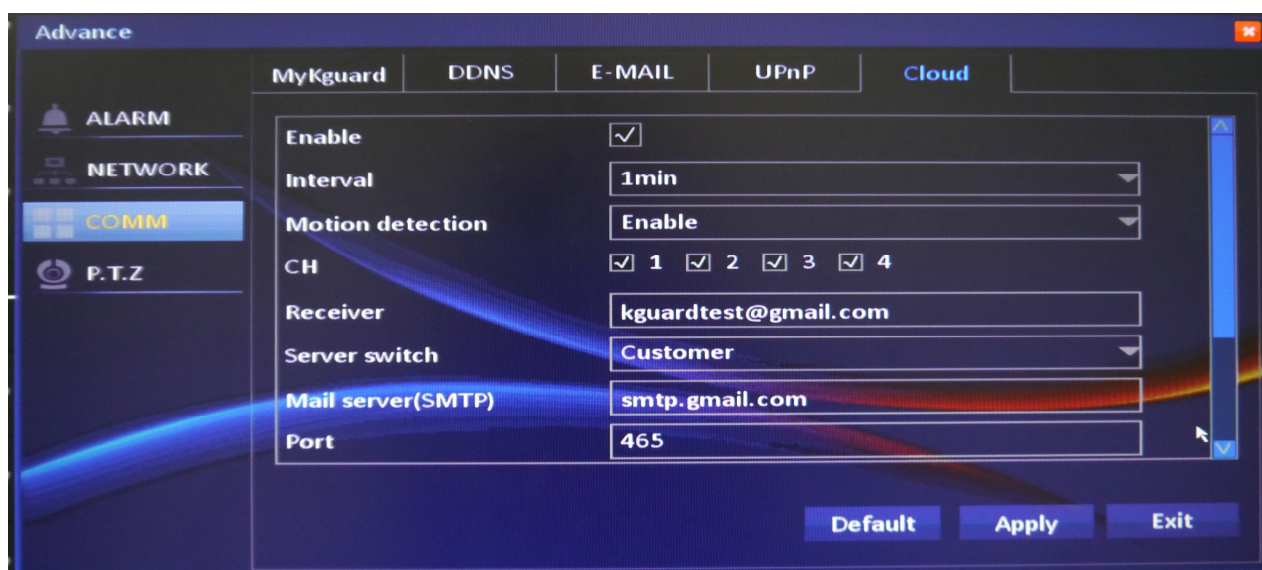
4. Select "Advance" → "COMM"

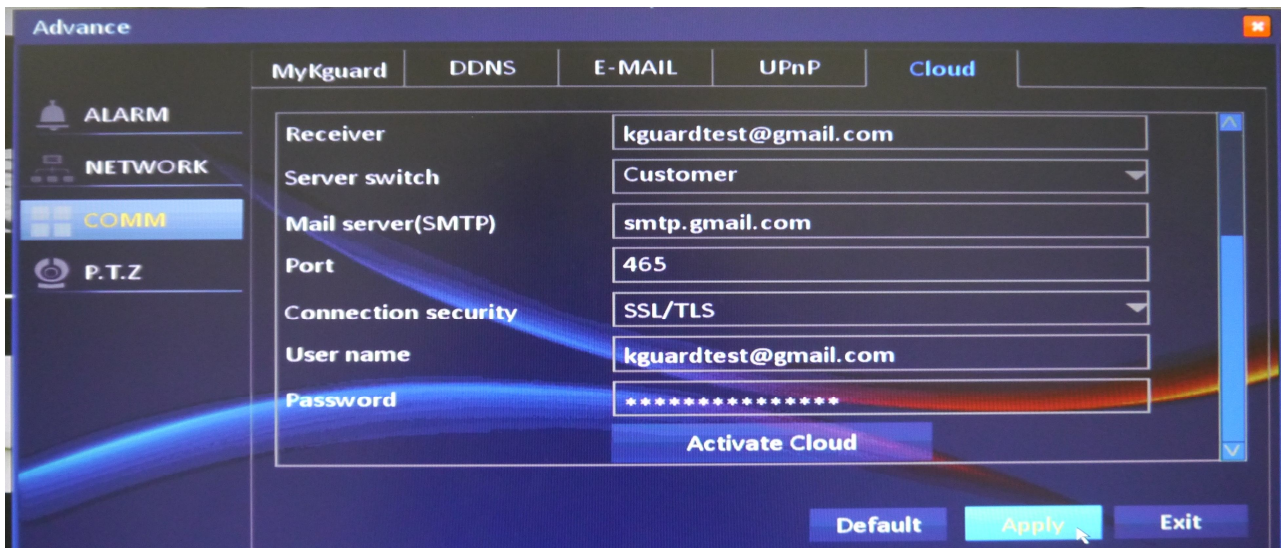


5. Select “Cloud” and enable Cloud Storage function

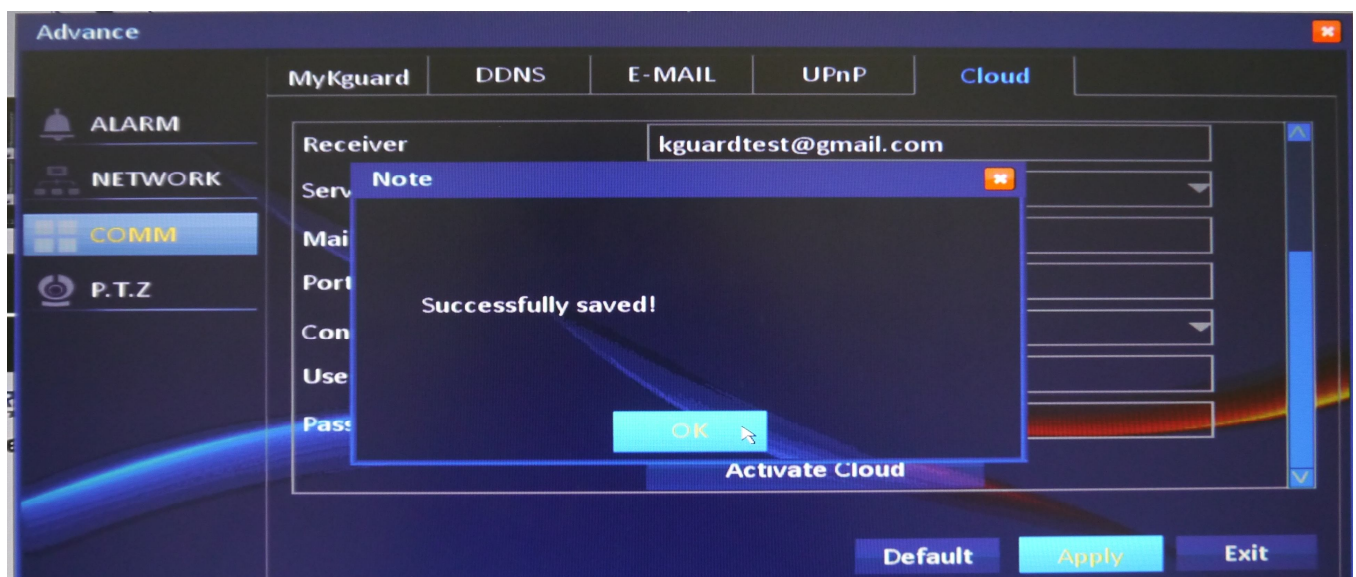


6. Select CH camera you want to upload picture, set time interval and set Dropbox email. Click “Apply” when finished.

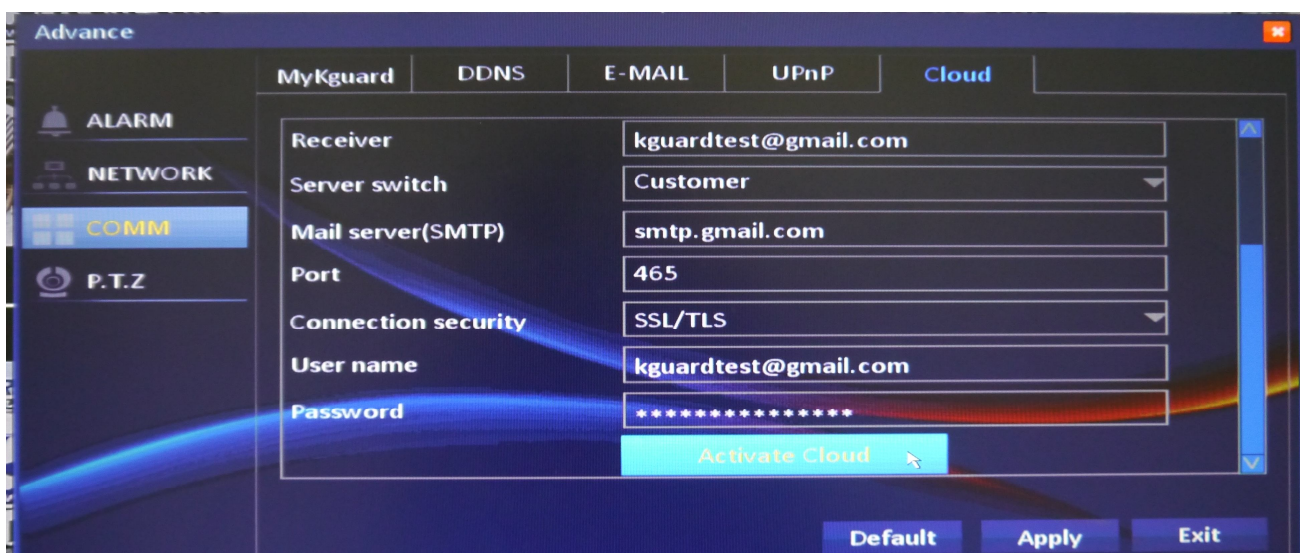


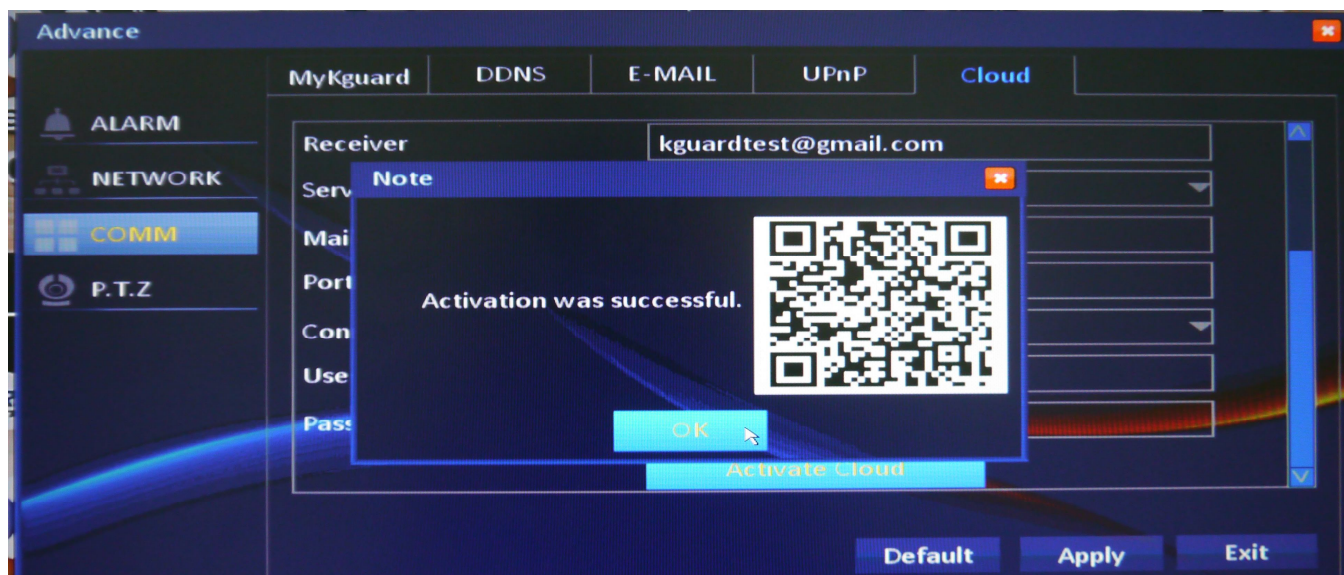
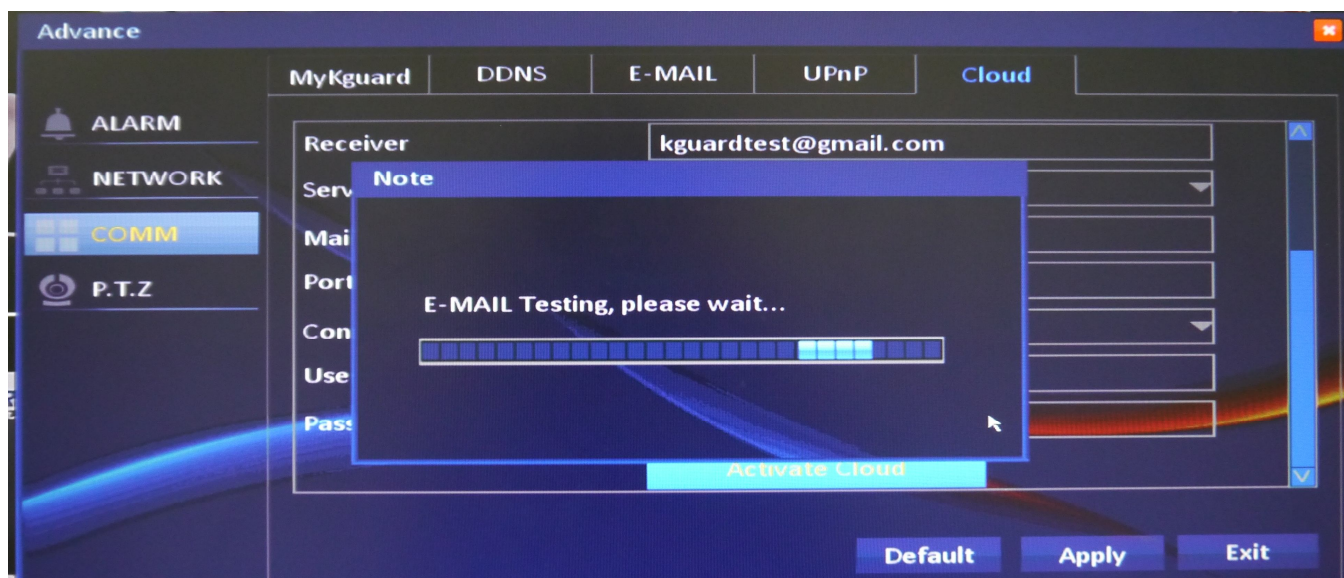


7. DVR display message “Successfully saved !”, click “OK”



8. Click “**Activate Cloud**” to activate DVR cloud function. DVR will send activation email to your email box. You must activate email within 3 minutes or you need to try again.

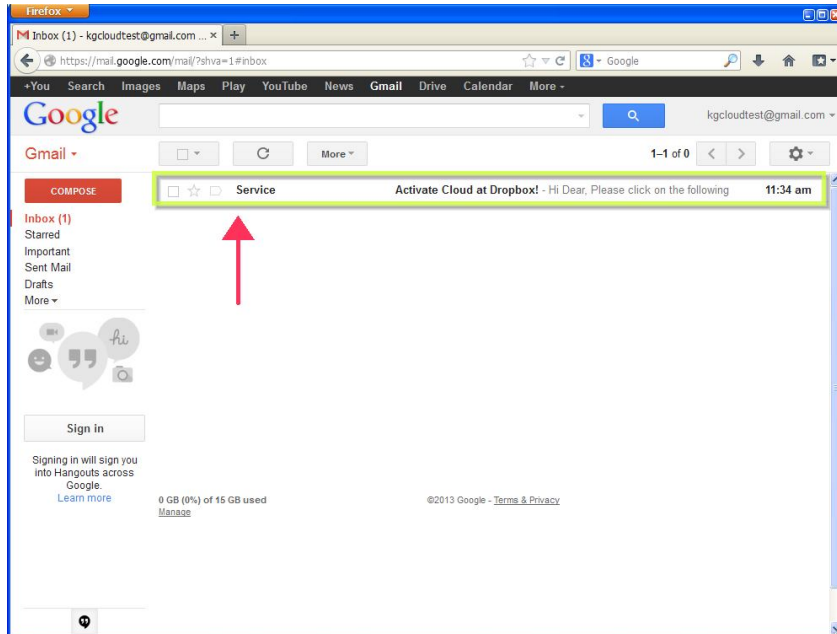




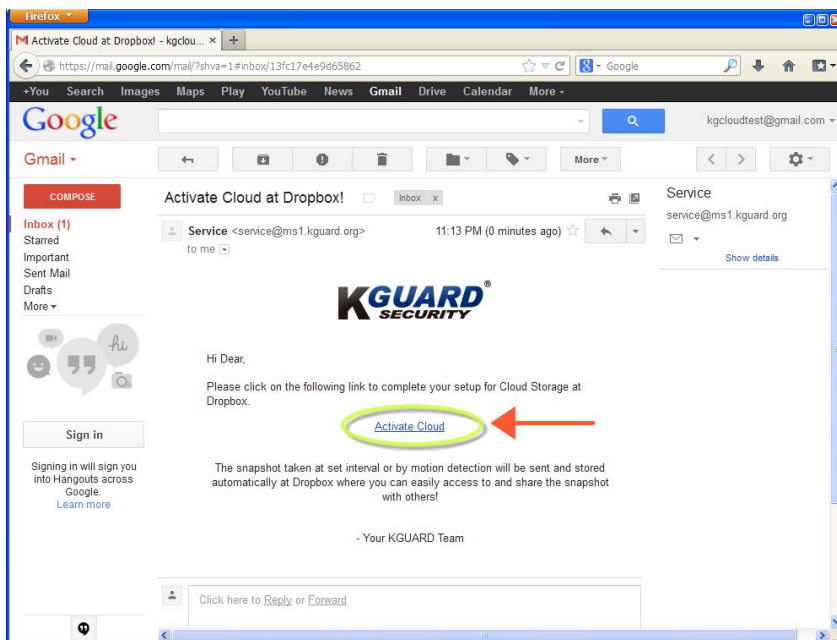
And then you can choose use the Mail or the QR Code to activate cloud.

Use the Mail to active cloud

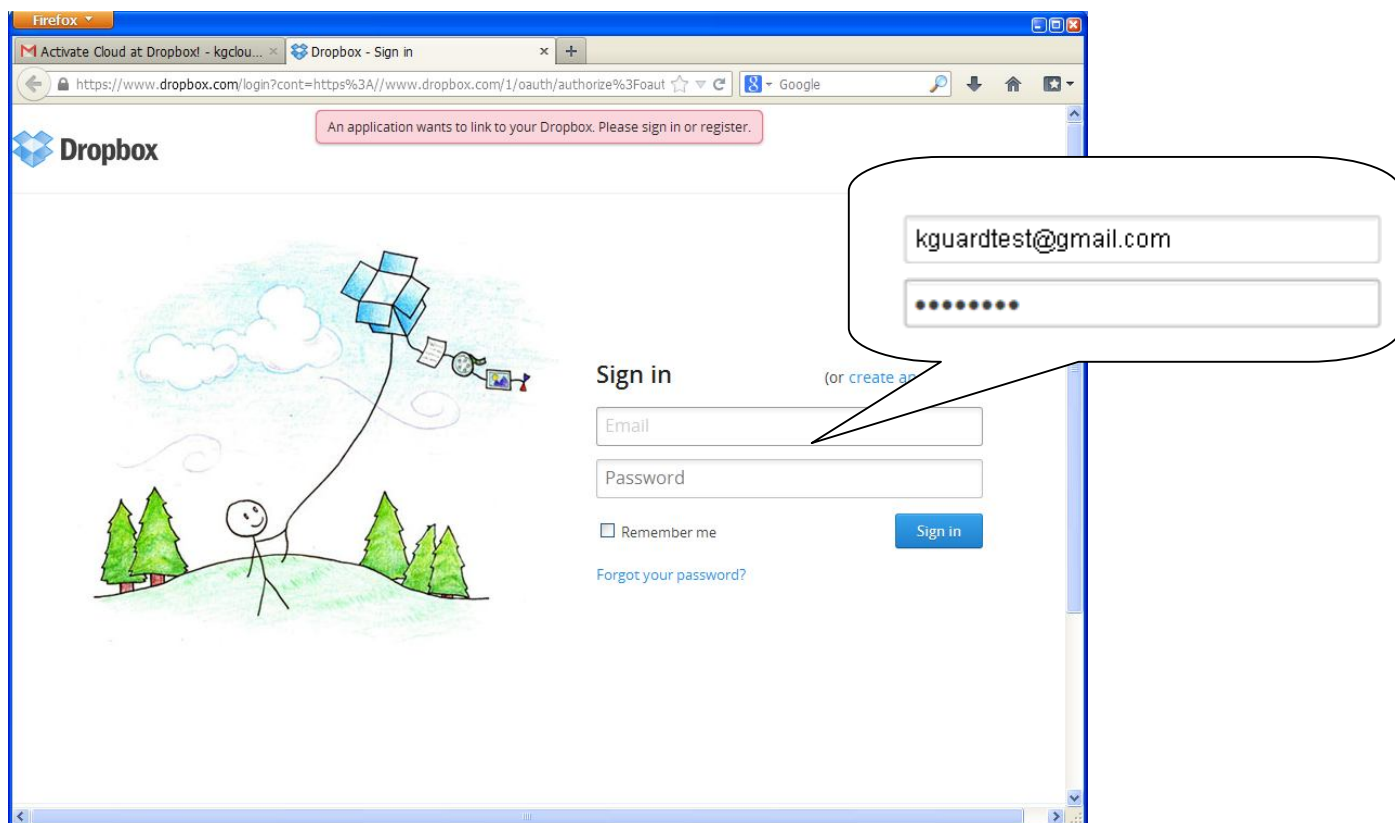
1. You will see an email title “**Activate Cloud at Dropbox**”



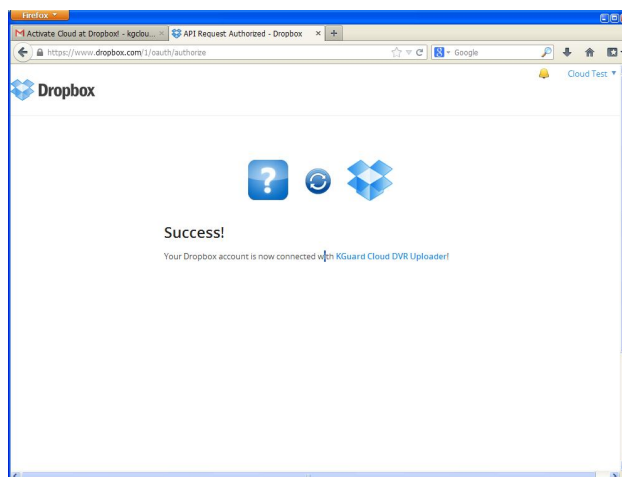
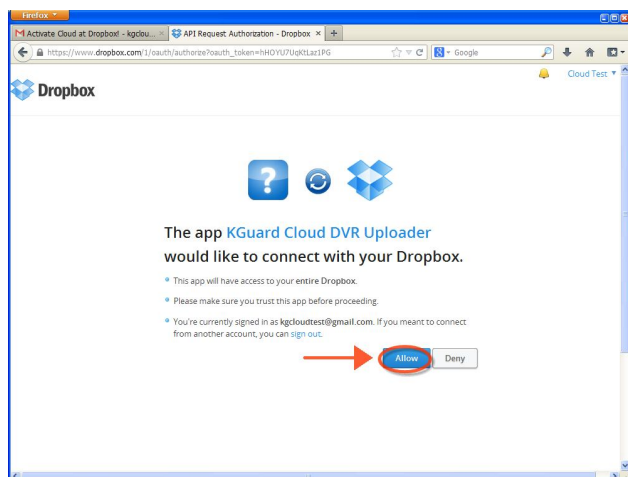
2. Click “**Activate Cloud**” link in email



3. It will open Dropbox in web browser. Please use same Dropbox account you setup in DVR to login.

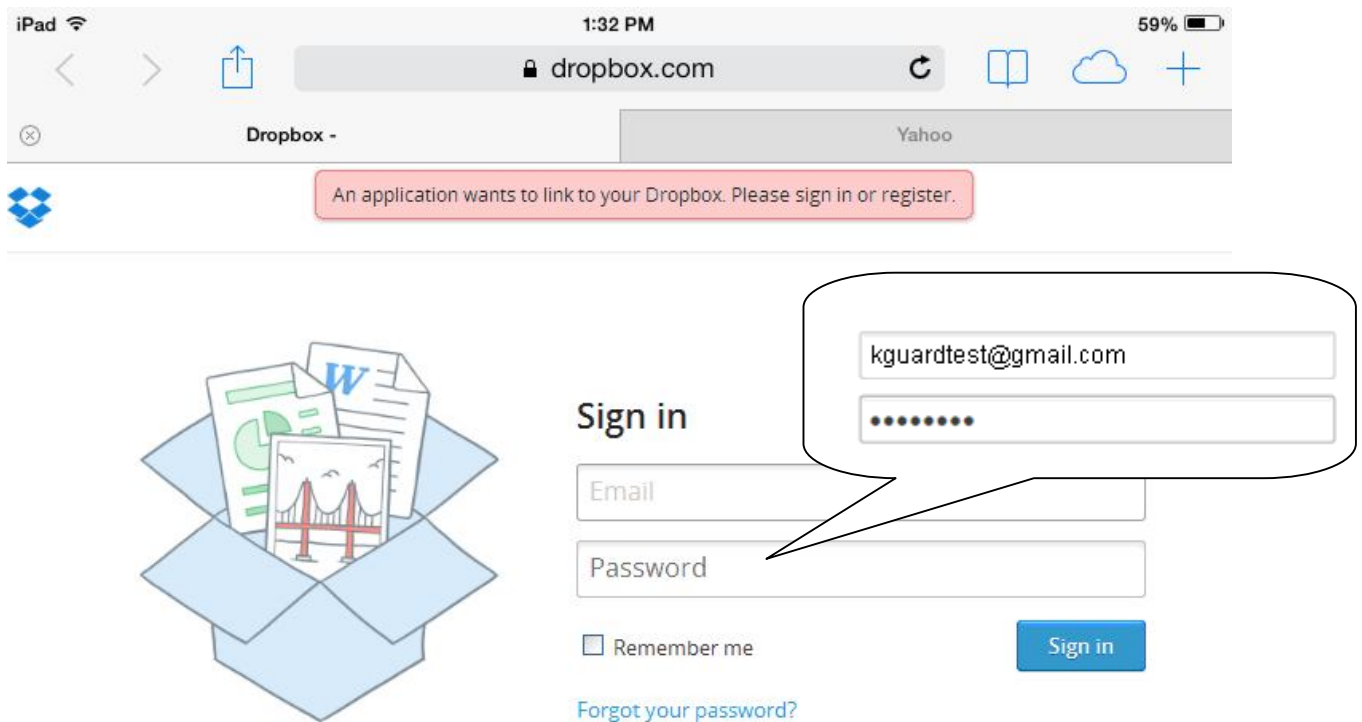


4. Please click “**Allow**” for KGuard Cloud DVR Uploader to connect with your Dropbox account. If you finish within 3 minutes, it will display a success message.

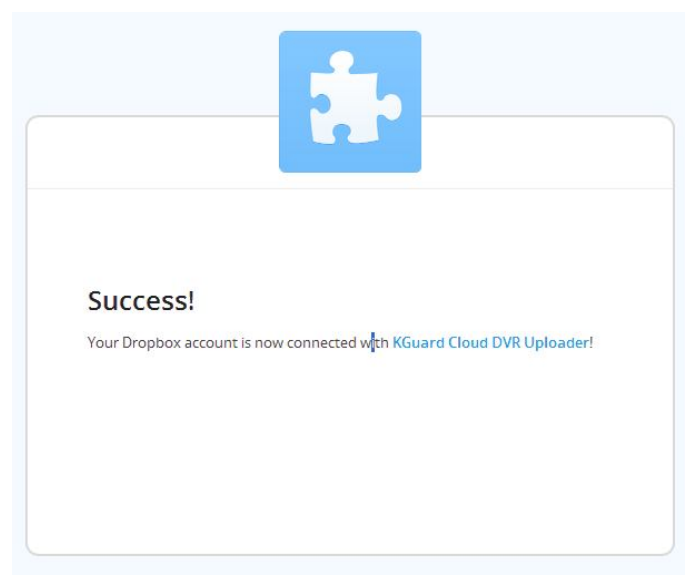
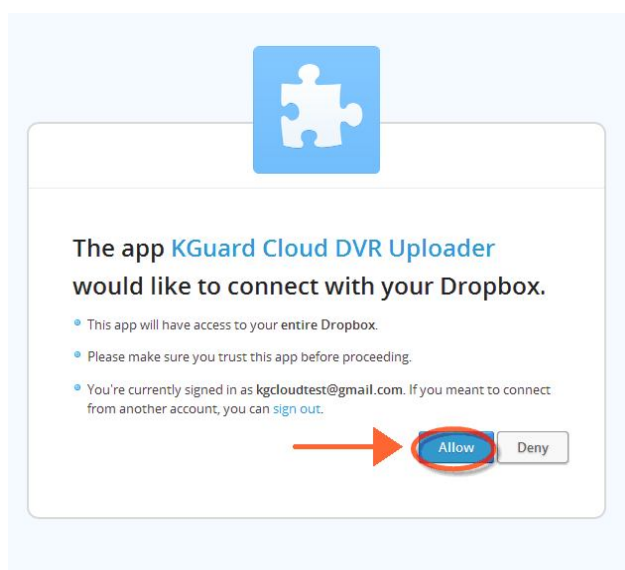


Use the QR code to active cloud

1. Please scan the QR code and link to Cloud.
2. It will open Dropbox in web browser. Please use same Dropbox account you setup in DVR to login.



3. Please click “**Allow**” for KGuard Cloud DVR Uploader to connect with your Dropbox account. If you finish within 3 minutes, it will display a success message.



4. After EL DVR cloud function is activate successfully, DVR will upload picture to your Dropbox account.

